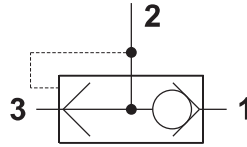
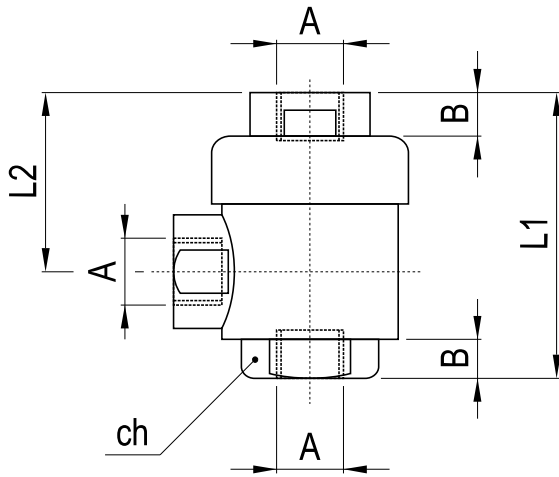


# valvole di scarico rapido

quick exhaust valves



## Materiali

Corpo: ottone nichelato

Parti interne: ottone OT58

Guarnizioni: NBR

## Materials

Valve body: nickeled brass

Internal parts: brass OT58

Seals: NBR

codice code	A	B	L1	L2	ch
36.626.0	G1/8"	6.5	42	27	15
36.627.0	G1/4"	9.5	53	35	19
36.625.0	G1/2"	13	72	43	26
36.1151.0	G3/4"	18	88	55	32
36.1152.0	G1"	18	94	57.5	38

Attacchi Ports	G1/8"; G1/4"; G1/2"; G3/4"; G1"
Temperatura di esercizio Temperature range	max +60°C
Pressione di esercizio Working pressure	2 ... 10 bar 0.2 ... 1 MPa
Fluido Fluid	Aria filtrata 50µ con o senza lubrificazione 50µ filtered, lubricated or non lubricated air