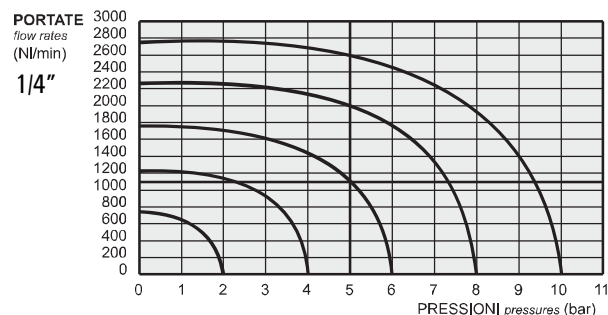
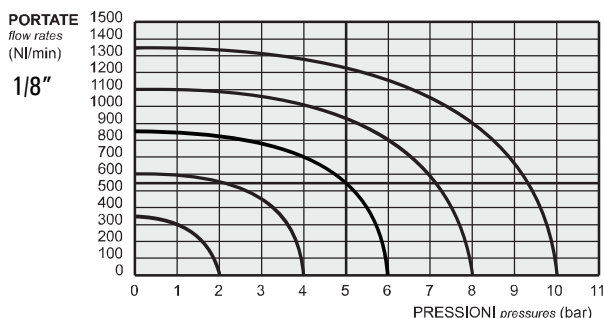


valvole ad azionamento pneumatico

pneumatically piloted valves



- Valvole a spola 3/2-5/2-5/3 con attacchi filettati G1/8"-G1/4"
3/2-5/2-5/3 spool valves with G1/8"-G1/4" threaded ports
- Montaggio in linea, su collettori multipli o su basi manifold
Installation in-line, gang or manifold mounted
- Ampia gamma di azionamenti
Comprehensive range of actuations
- Versioni con elemento logico integrato
Versions with integrated logic element
- Esecuzioni speciali a richiesta
Special versions on request



Tempi di risposta - response times

	1/8"	1/4"
monostabile <i>mono-stable</i>	TRA (14): 6 ms TRR (12): 15 ms	TRA (14): 7 ms TRR (12): 15 ms
bistabile <i>bi-stable</i>	TRA (14): 7 ms TRR (12): 7 ms	TRA (14): 7 ms TRR (12): 7 ms

Materiali

Corpo: alluminio 11S

Molle: INOX

Guarnizioni: NBR

Spola: alluminio nichelato

Parti interne: ottone OT58

Materials

Body: aluminium 11S

Springs: stainless steel

Seals: NBR

Spool: nickel plated aluminium

Internal parts: brass OT58

Diametro nominale <i>Nominal orifice</i>	1/8": 5 mm 1/4": 7.5 mm	
Temperatura di esercizio <i>Temperature range</i>	max +60°C	
Pressione di esercizio <i>Working pressure</i>	max 10 bar max 1 MPa	
Pressione di azionamento <i>Actuating pressure</i>	monostabile [mono-stable]	bistabile [bi-stable]
	2.5 ... 10 bar 0.25 ... 1 MPa	1 ... 10 bar 0.1 ... 1 MPa
Fluido <i>Fluid</i>	Aria filtrata 50µ con o senza lubrificazione <i>50µ filtered, lubricated or non lubricated air</i>	

valvole ad azionamento pneumatico

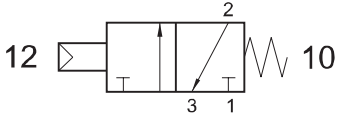
pneumatically piloted valves



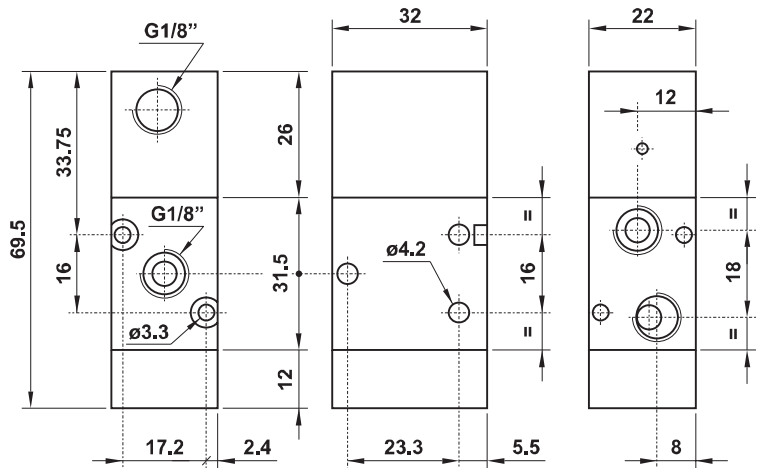
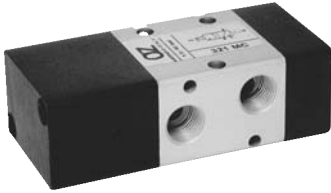
321 MC

3/2 1/8" NC comando pneumatico - ritorno a molla

3/2 1/8" NC pneumatic pilot - spring return



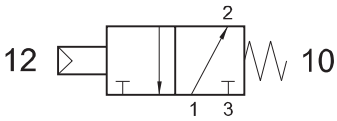
Non può essere utilizzata come valvola normalmente aperta.
It cannot be used as normally open valve.



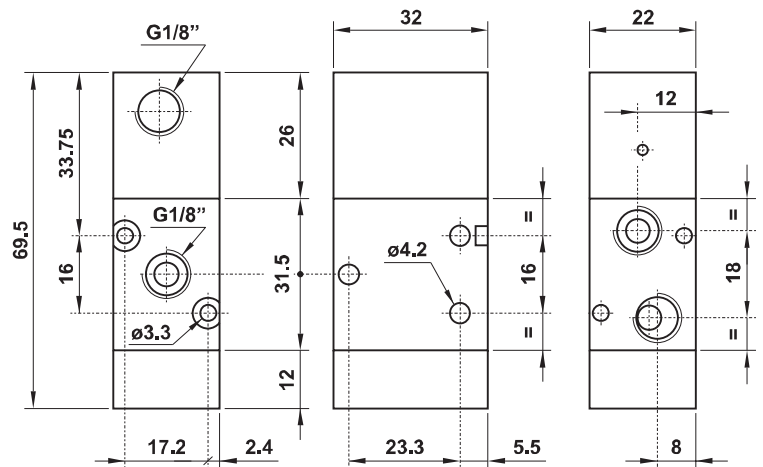
321 MCA

3/2 1/8" NA comando pneumatico - ritorno a molla

3/2 1/8" NO pneumatic pilot - spring return



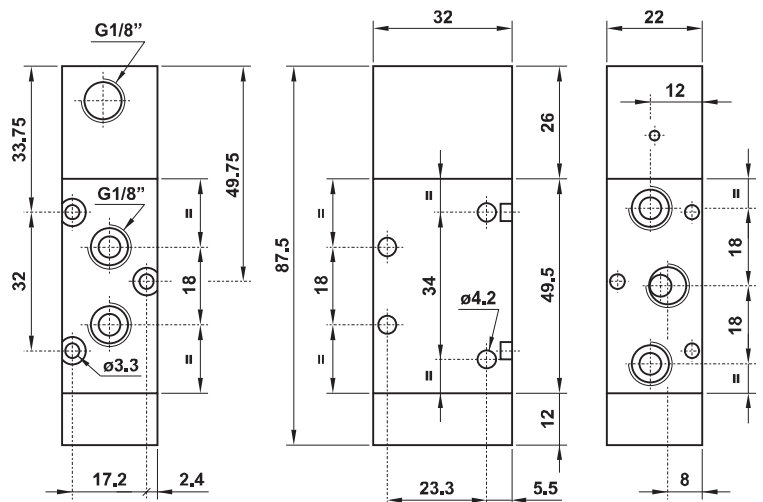
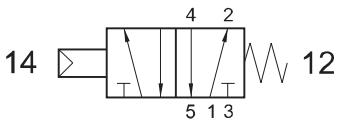
Non può essere utilizzata come valvola normalmente chiusa.
It cannot be used as normally closed valve.



521 MC

5/2 1/8" comando pneumatico - ritorno a molla

5/2 1/8" pneumatic pilot - spring return



valvole ad azionamento pneumatico

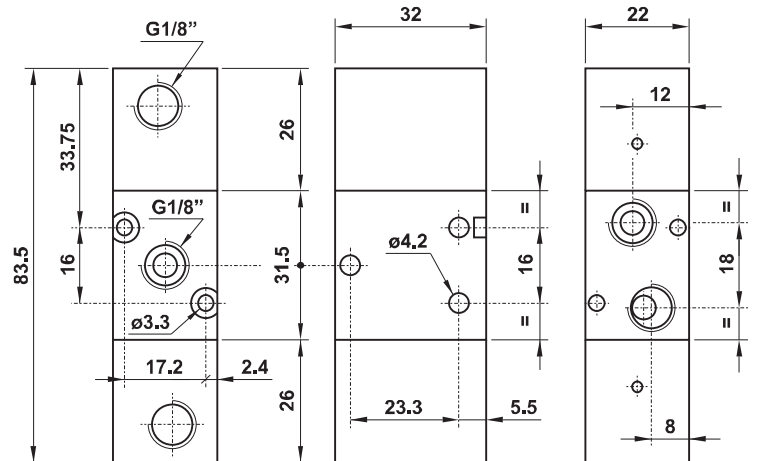
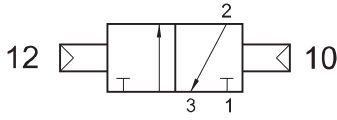
pneumatically piloted valves



321 CC

3/2 1/8" doppio comando pneumatico

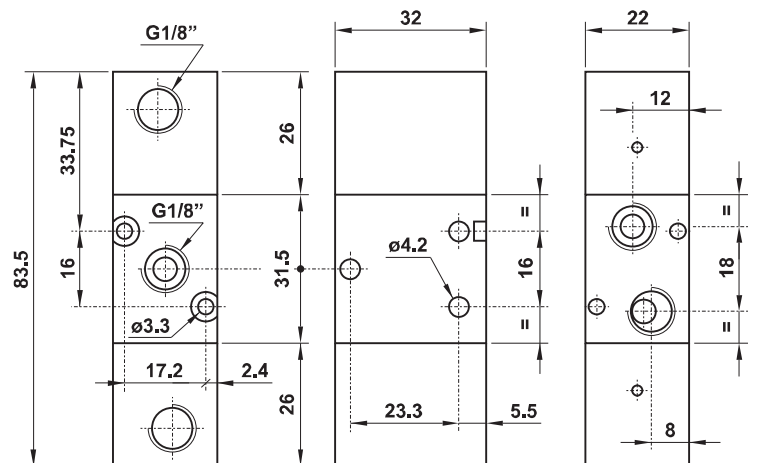
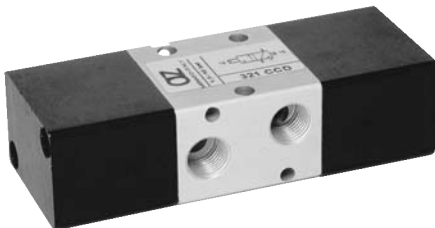
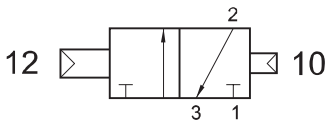
3/2 1/8" double pneumatic pilot



321 CCD

3/2 1/8" doppio comando pneumatico - con differenziale

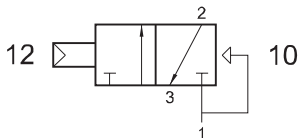
3/2 1/8" double pneumatic pilot - with differential



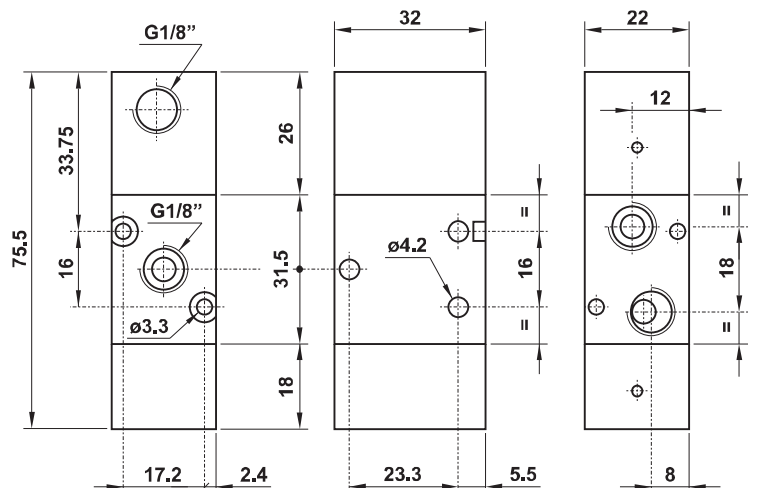
321 CFP

3/2 1/8" NC comando pneumatico - ritorno a molla pneumatica

3/2 1/8" NC pneumatic pilot - pneumatic spring return



Non può essere utilizzata come valvola normalmente aperta.
It cannot be used as normally open valve.



valvole ad azionamento pneumatico

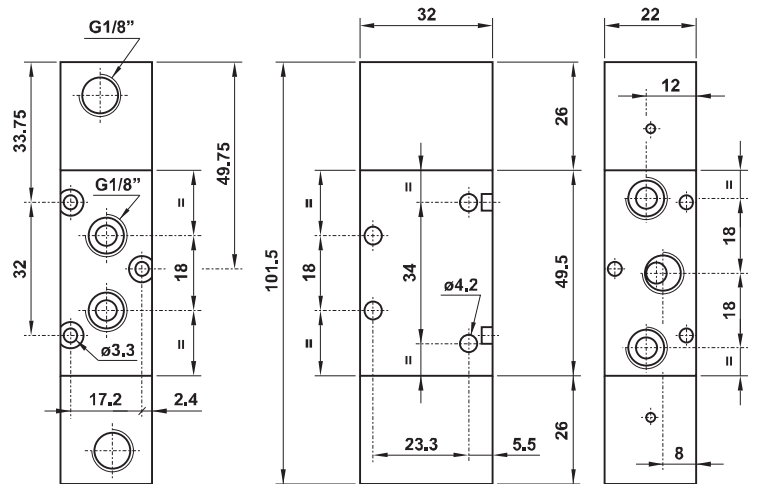
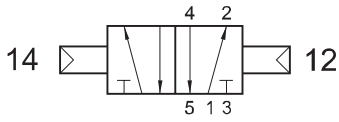
pneumatically piloted valves



521 CC

5/2 1/8" doppio comando pneumatico

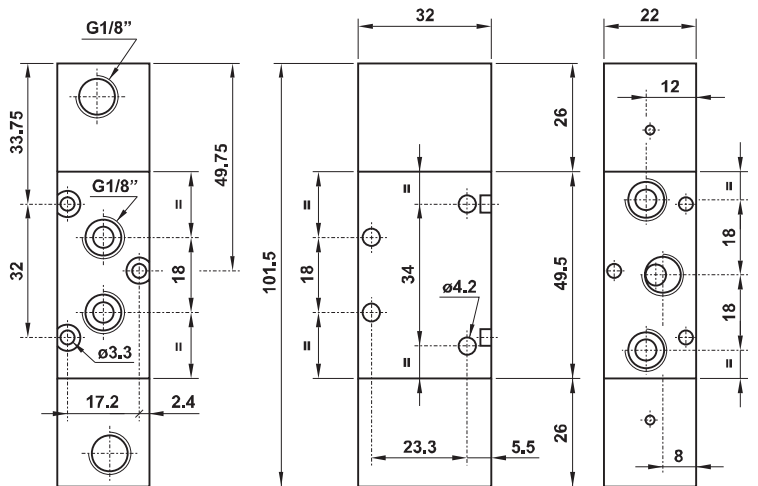
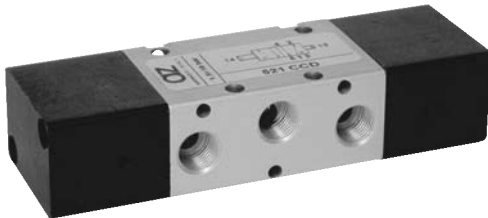
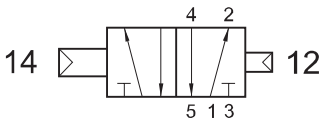
5/2 1/8" double pneumatic pilot



521 CCD

5/2 1/8" doppio comando pneumatico - con differenziale

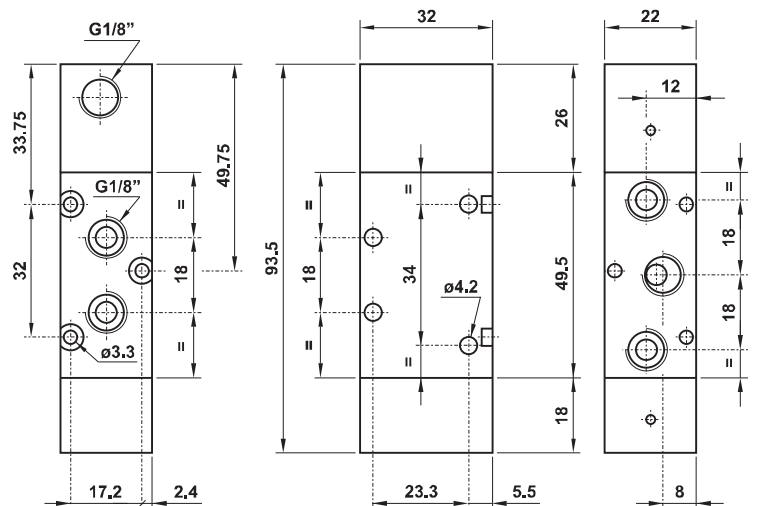
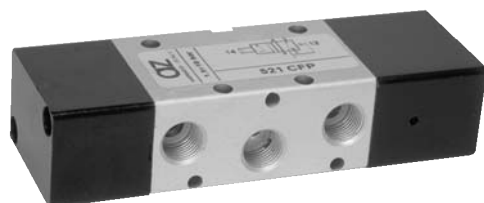
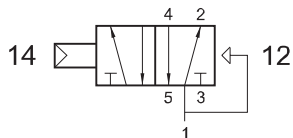
5/2 1/8" double pneumatic pilot - with differential



521 CFP

5/2 1/8" comando pneumatico - ritorno a molla pneumatica

5/2 1/8" pneumatic pilot - pneumatic spring return



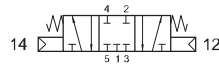
valvole ad azionamento pneumatico

pneumatically piloted valves



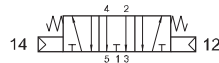
5213C CC

centri chiusi
closed centres



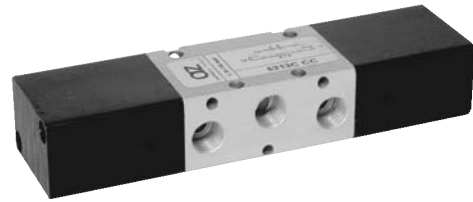
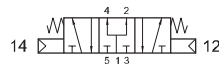
5213A CC

centri aperti
open centres



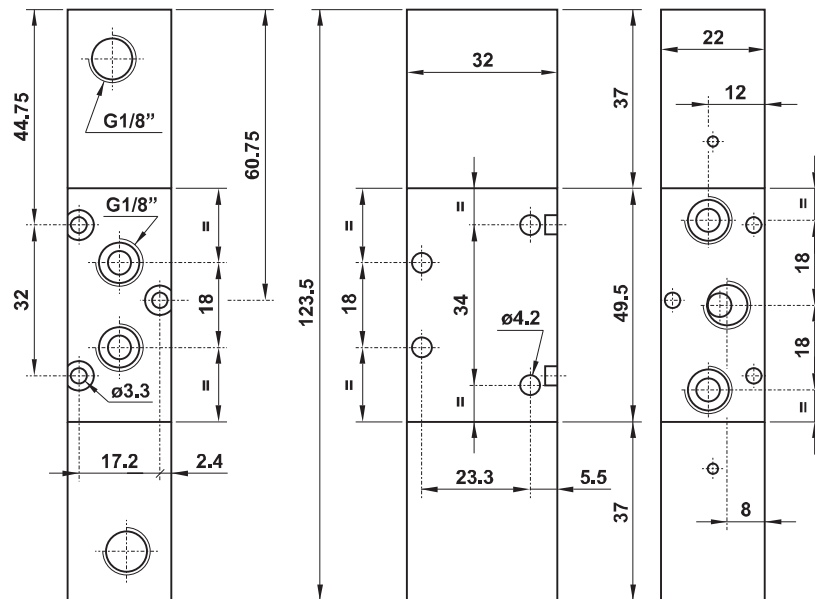
5213P CC

centri in pressione
pressurized centres



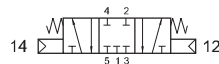
5/3 1/8" doppio comando pneumatico

5/3 1/8" double pneumatic pilot



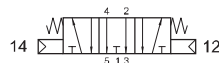
5223C CC

centri chiusi
closed centres



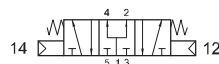
5223A CC

centri aperti
open centres



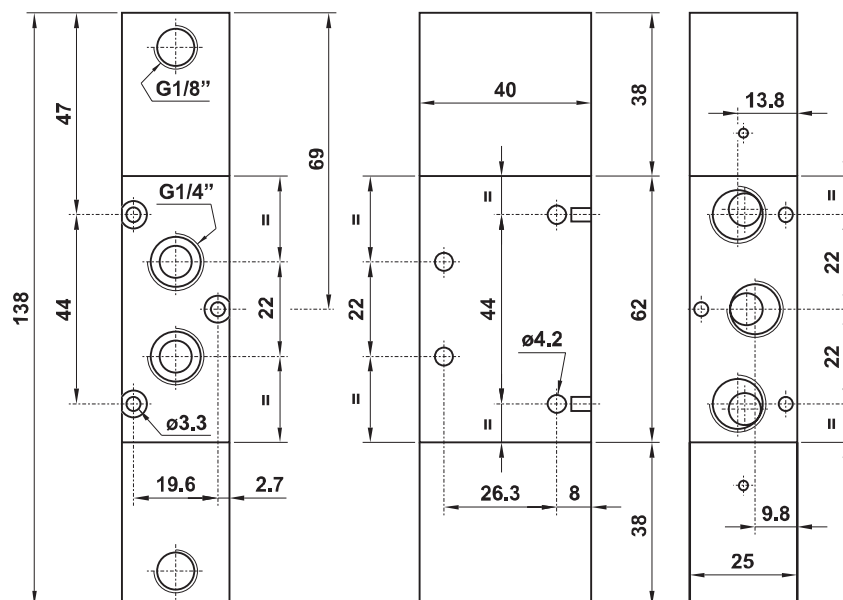
5223P CC

centri in pressione
pressurized centres



5/3 1/4" doppio comando pneumatico

5/3 1/4" double pneumatic pilot



valvole ad azionamento pneumatico

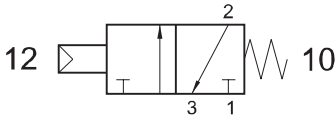
pneumatically piloted valves



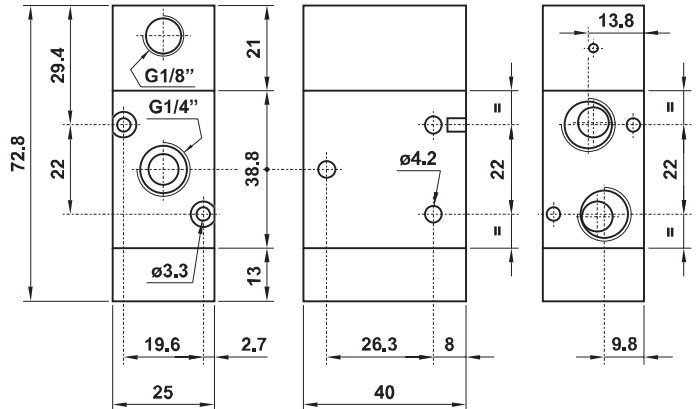
322 MC

3/2 1/4" NC comando pneumatico - ritorno a molla

3/2 1/4" NC pneumatic pilot - spring return



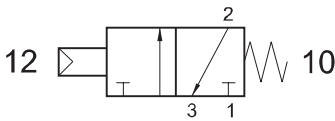
Non può essere utilizzata come valvola normalmente aperta.
It cannot be used as normally open valve.



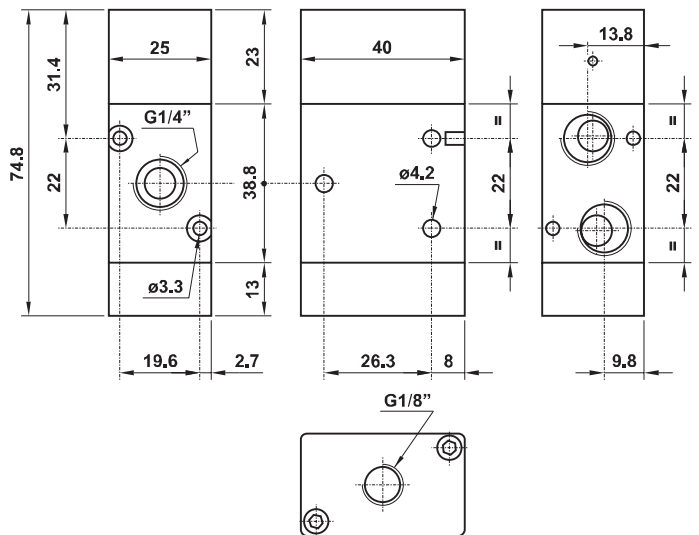
322 MC SUP

3/2 1/4" NC comando pneumatico attacco superiore - ritorno a molla

3/2 1/4" NC pneumatic pilot on the top - spring return



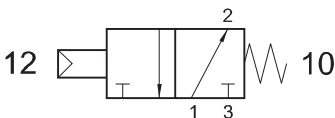
Non può essere utilizzata come valvola normalmente aperta.
It cannot be used as normally open valve.



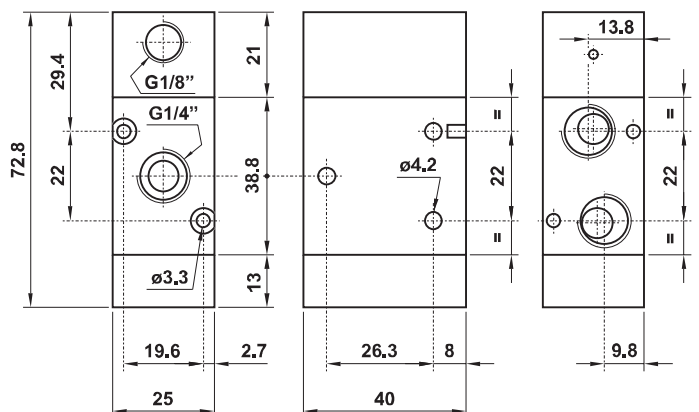
322 MCA

3/2 1/4" NA comando pneumatico - ritorno a molla

3/2 1/4" NO pneumatic pilot - spring return



Non può essere utilizzata come valvola normalmente chiusa.
It cannot be used as normally closed valve.



valvole ad azionamento pneumatico

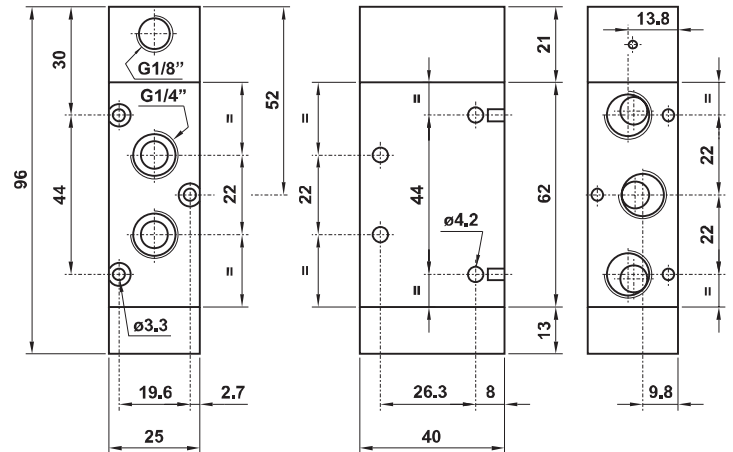
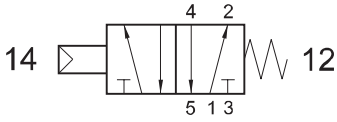
pneumatically piloted valves



522 MC

5/2 1/4" comando pneumatico - ritorno a molla

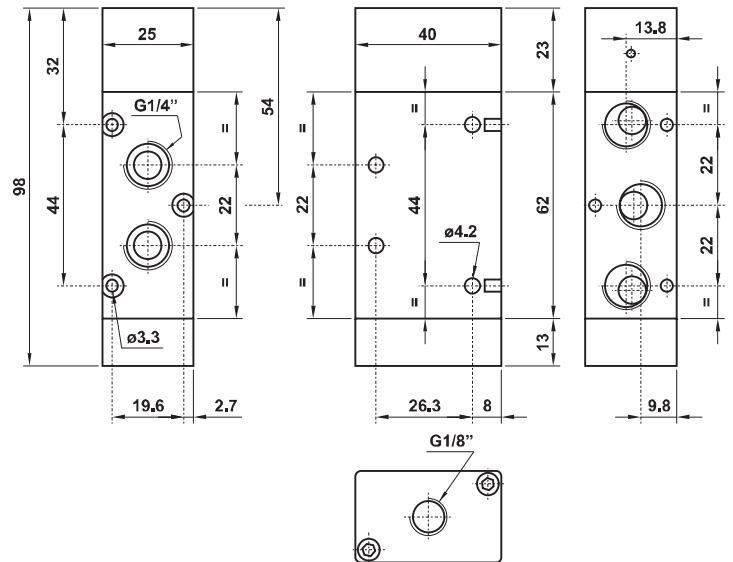
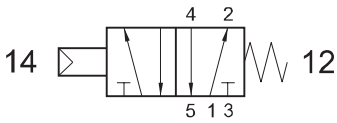
5/2 1/4" pneumatic pilot - spring return



522 MC SUP

5/2 1/4" comando pneumatico attacco superiore - ritorno a molla

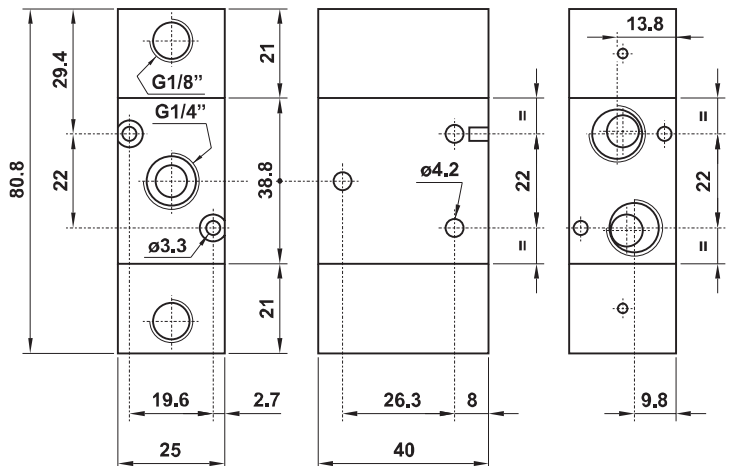
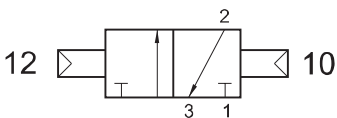
5/2 1/4" pneumatic pilot on the top - spring return



322 CC

3/2 1/4" doppio comando pneumatico

3/2 1/4" double pneumatic pilot



valvole ad azionamento pneumatico

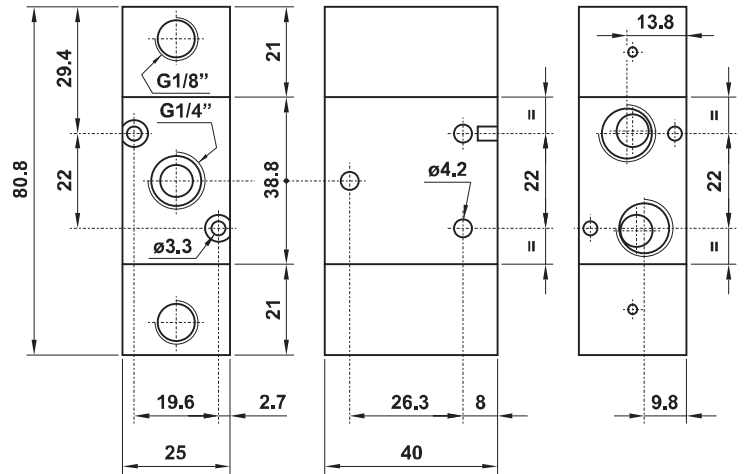
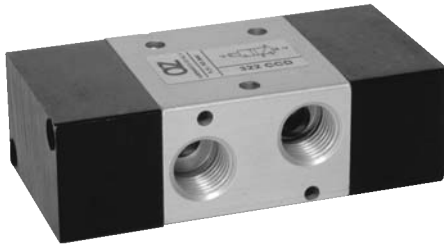
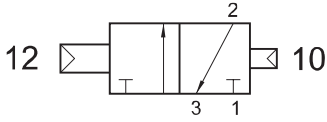
pneumatically piloted valves



322 CCD

3/2 1/4" doppio comando pneumatico - con differenziale

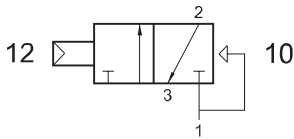
3/2 1/4" double pneumatic pilot - with differential



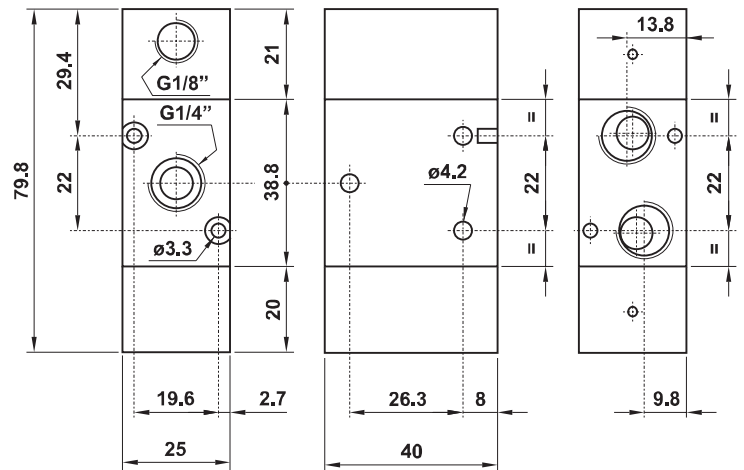
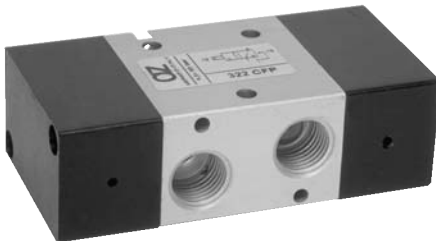
322 CFP

3/2 1/4" NC comando pneumatico - ritorno a molla pneumatica

3/2 1/4" NC pneumatic pilot - pneumatic spring return



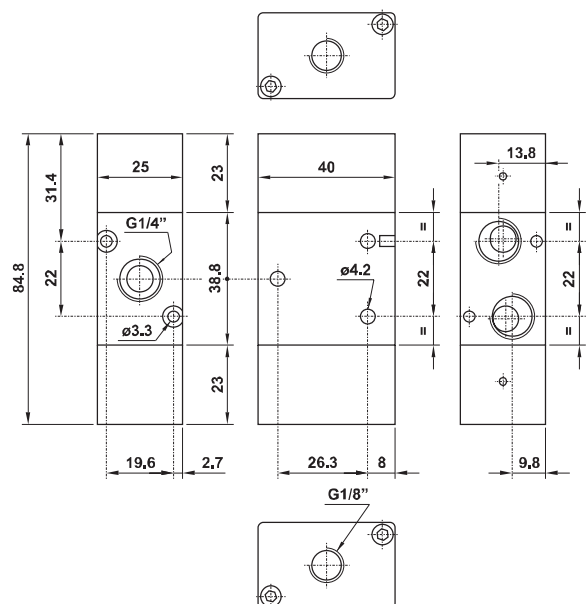
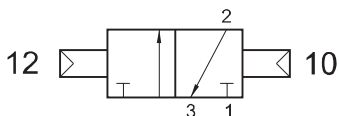
Non può essere utilizzata come valvola normalmente aperta.
It cannot be used as normally open valve.



322 CC SUP

3/2 1/4" doppio comando pneumatico attacco superiore

3/2 1/4" double pneumatic pilot on the top



valvole ad azionamento pneumatico

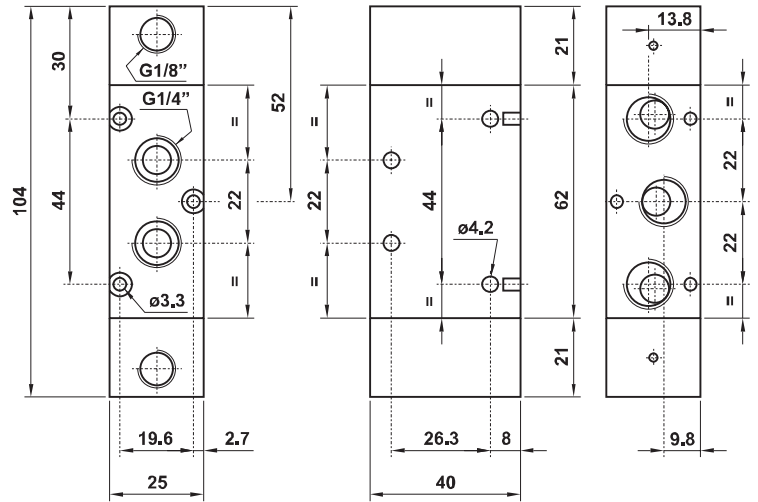
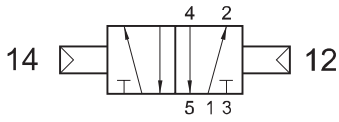
pneumatically piloted valves



522 CC

5/2 1/4" doppio comando pneumatico

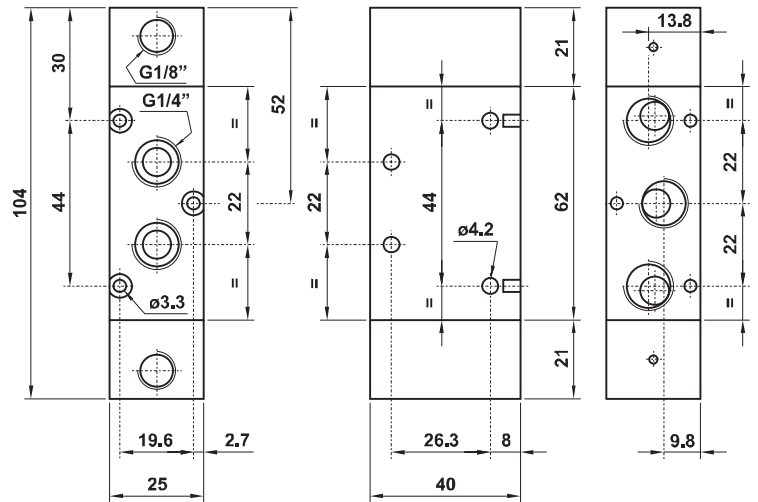
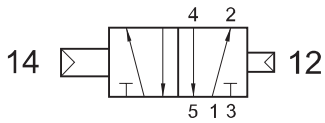
5/2 1/4" double pneumatic pilot



522 CCD

5/2 1/4" doppio comando pneumatico - con differenziale

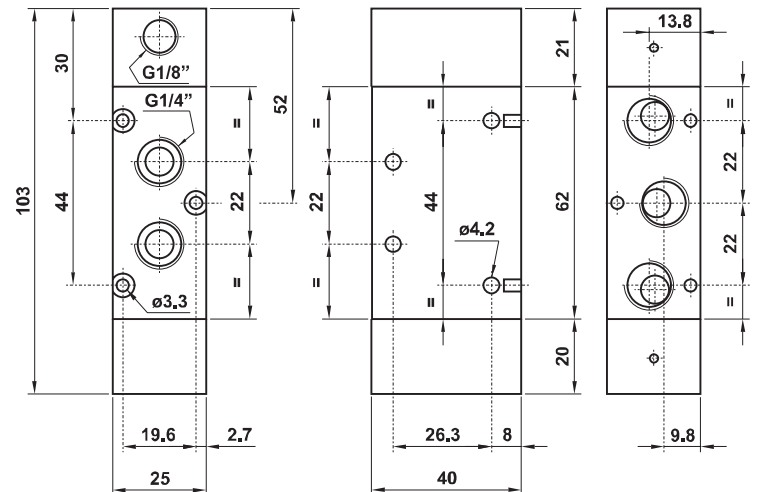
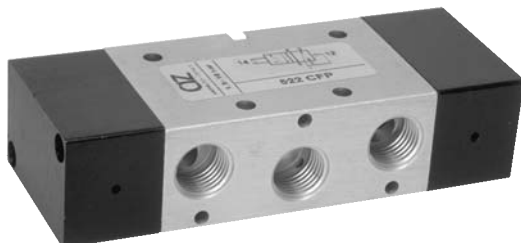
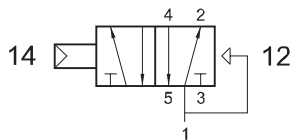
5/2 1/4" double pneumatic pilot - with differential



522 CFP

5/2 1/4" comando pneumatico - ritorno a molla pneumatica

5/2 1/4" pneumatic pilot - pneumatic spring return



valvole ad azionamento pneumatico

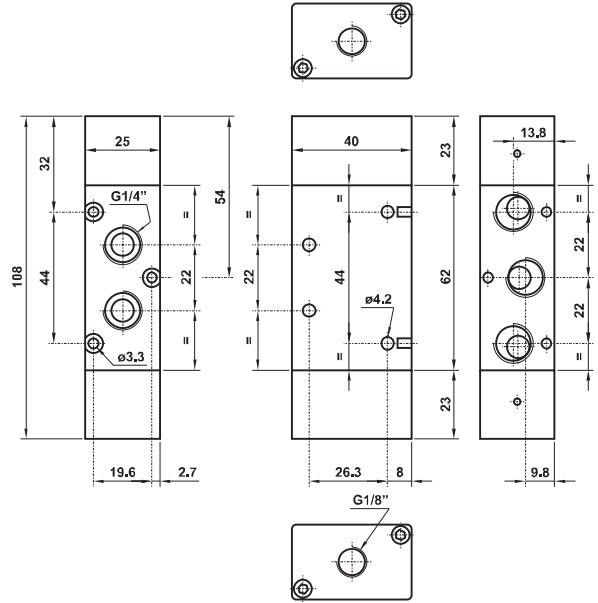
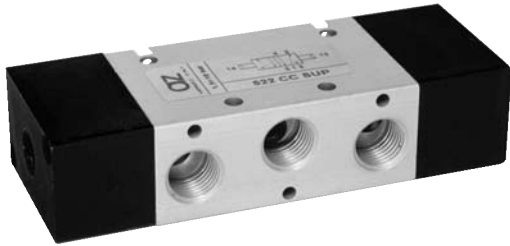
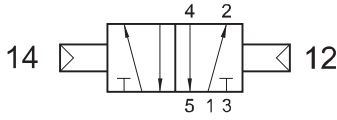
pneumatically piloted valves



522 CC SUP

5/2 1/4" doppio comando pneumatico attacco superiore

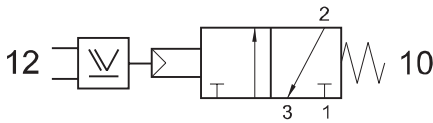
5/2 1/4" double pneumatic pilot on the top



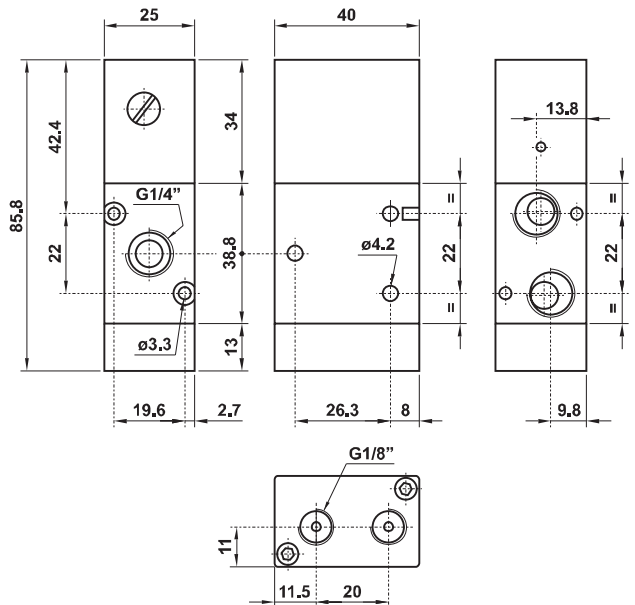
322 ORM

3/2 1/4" NC comando pneum. con elem. OR integrato - ritorno a molla

3/2 1/4" NC pneumatic pilot with integrated OR element - spring return



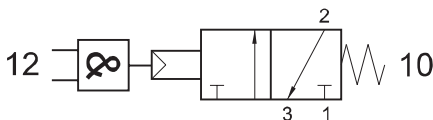
Non può essere utilizzata come valvola normalmente aperta.
It cannot be used as normally open valve.



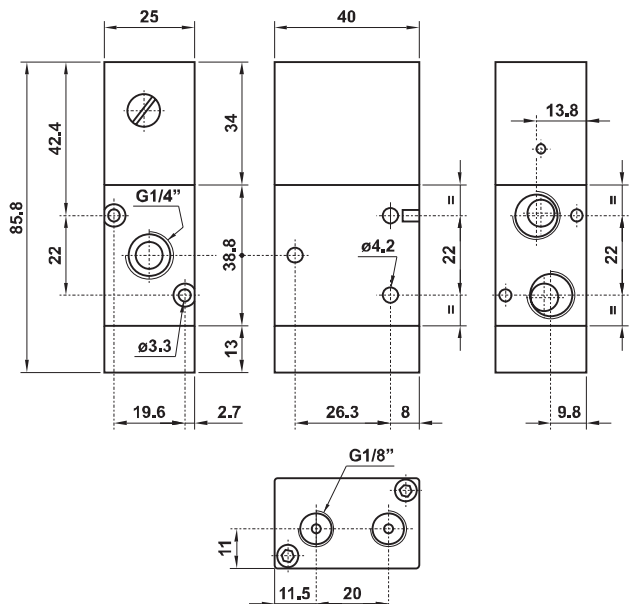
322 ANDM

3/2 1/4" NC comando pneum. con elem. AND integrato - ritorno a molla

3/2 1/4" NC pneumatic pilot with integrated AND element - spring return



Non può essere utilizzata come valvola normalmente aperta.
It cannot be used as normally open valve.



valvole ad azionamento pneumatico

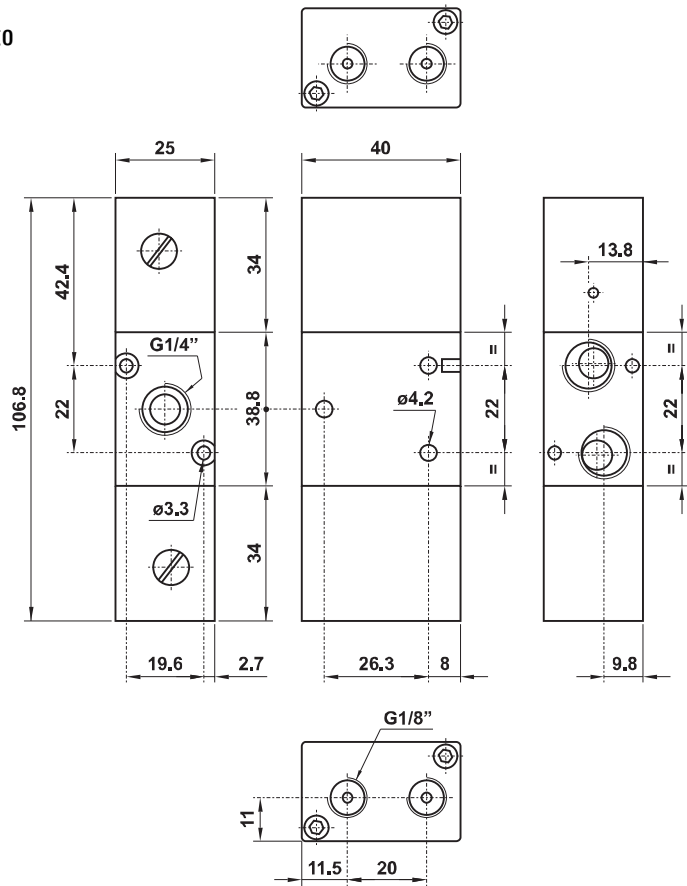
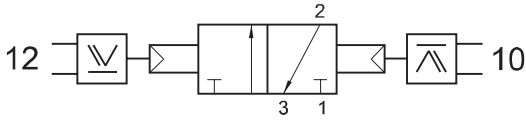
pneumatically piloted valves



322 2OR

3/2 1/4" doppio comando pneumatico con elemento OR integrato

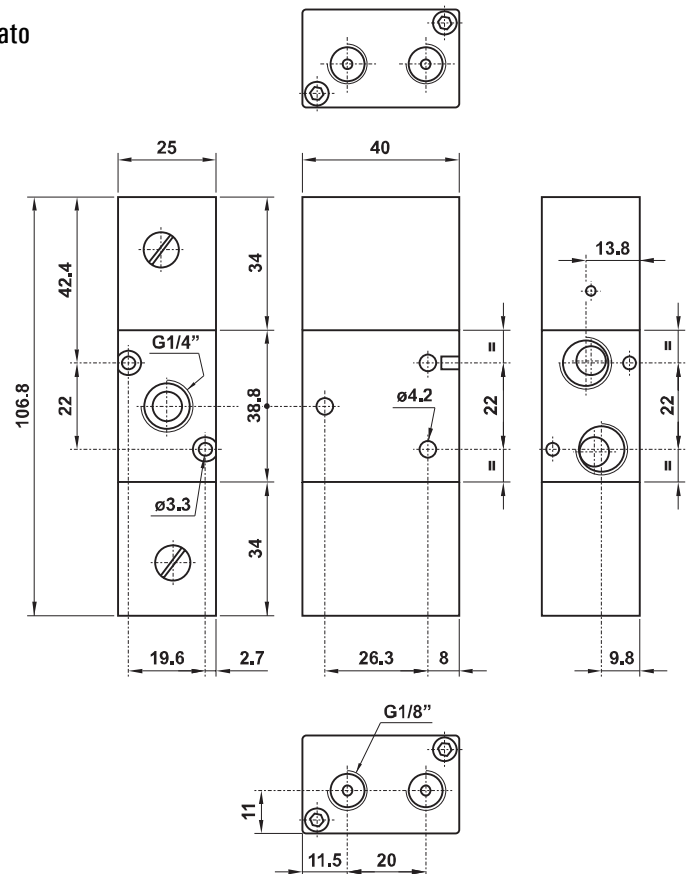
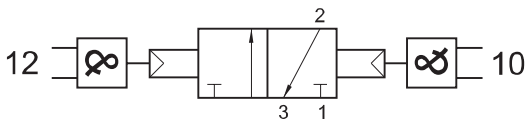
3/2 1/4" double pneumatic pilot with integrated OR element



322 2AND

3/2 1/4" doppio comando pneumatico con elemento AND integrato

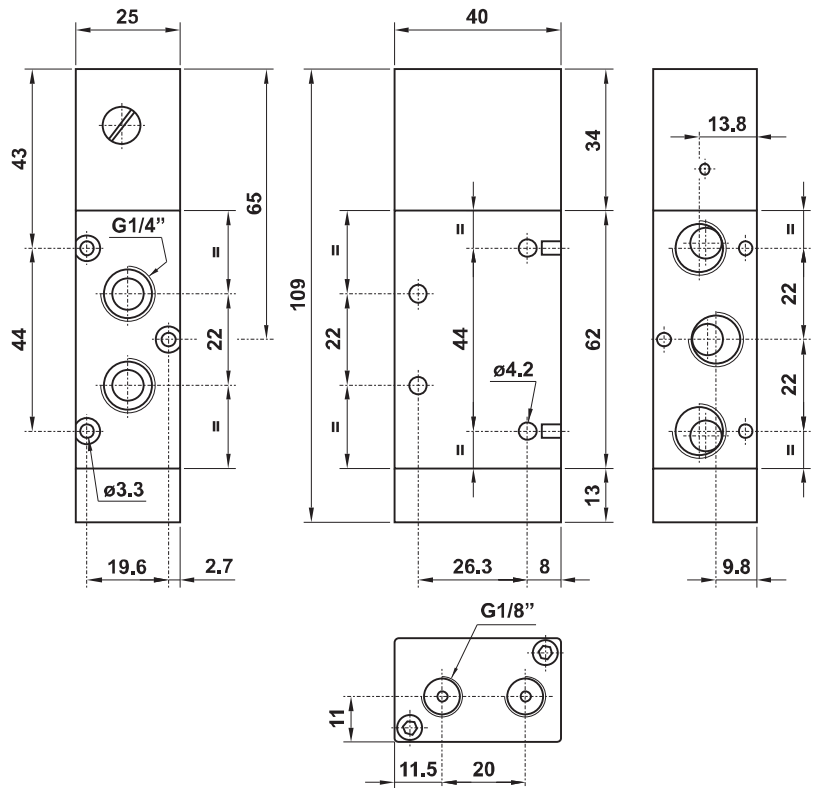
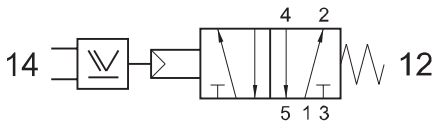
3/2 1/4" double pneumatic pilot with integrated AND element



522 ORM

5/2 1/4" comando pneum. con elemento OR integrato - ritorno a molla

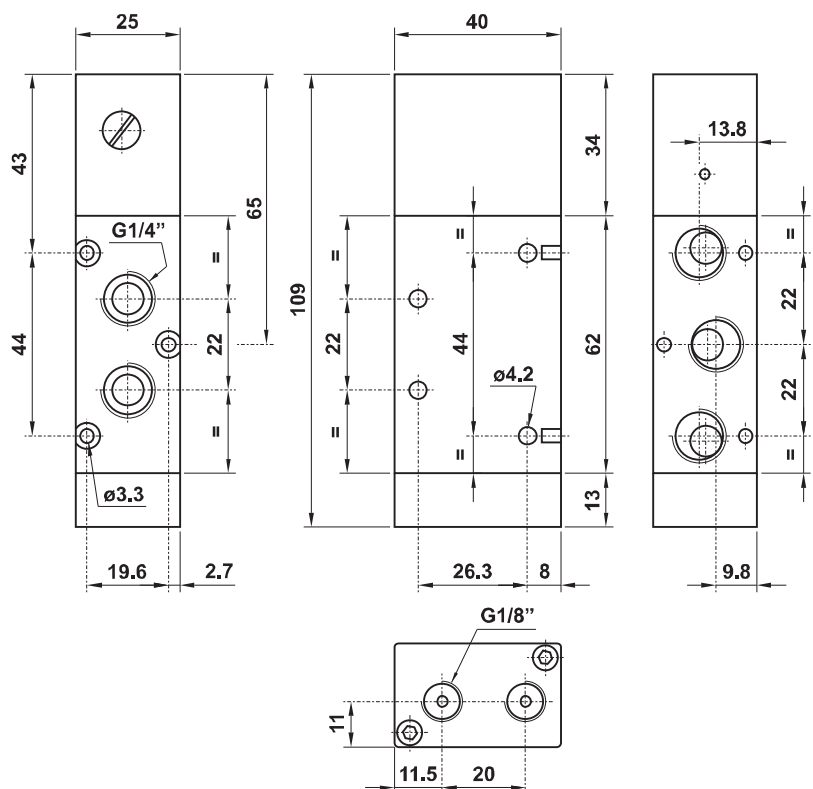
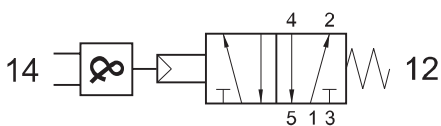
5/2 1/4" pneumatic pilot with integrated OR element - spring return



522 ANDM

5/2 1/4" comando pneum. con elem. AND integrato - ritorno a molla

5/2 1/4" pneumatic pilot with integrated AND element - spring return



valvole ad azionamento pneumatico

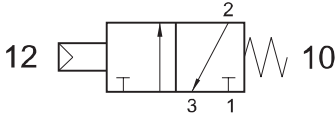
pneumatically piloted valves



321 MCQ

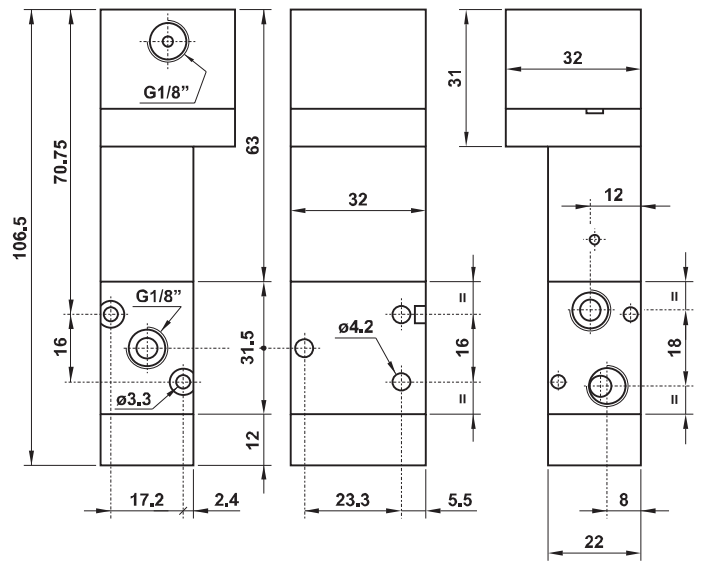
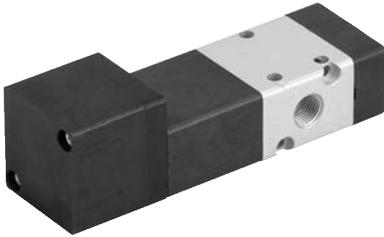
3/2 1/8" NC comando pneumatico 0.3 bar - ritorno a molla

3/2 1/8" NC pneumatic pilot 0.3 bar - spring return



Pressione di lavoro: min. 2.5 bar (0.25 MPa)
Pressione di comando: min. 0.3 bar (0.03 MPa)

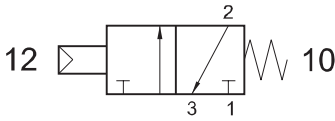
Work pressure: min. 2.5 bar (0.25 MPa)
Pilot pressure: min. 0.3 bar (0.03 MPa)



321 MCS

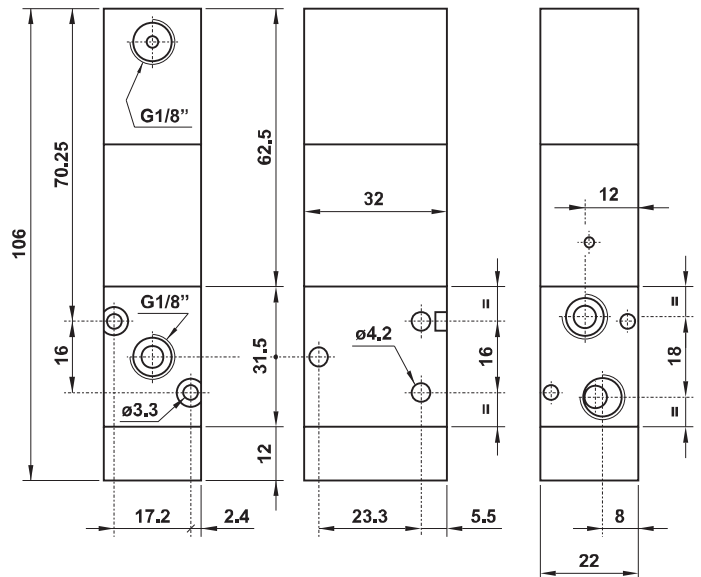
3/2 1/8" NC comando pneumatico 0.6 bar - ritorno a molla

3/2 1/8" NC pneumatic pilot 0.6 bar - spring return



Pressione di lavoro: min. 2.5 bar (0.25 MPa)
Pressione di comando: min. 0.6 bar (0.06 MPa)

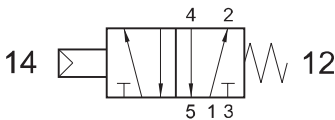
Work pressure: min. 2.5 bar (0.25 MPa)
Pilot pressure: min. 0.6 bar (0.06 MPa)



521 MCQ

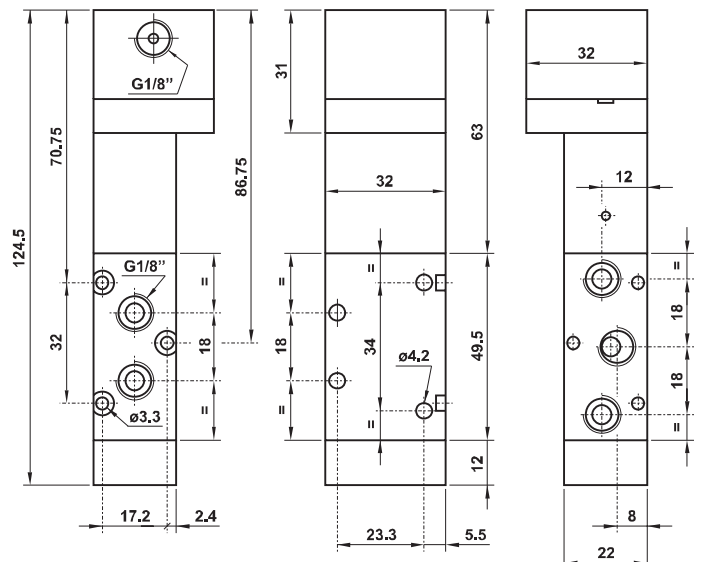
5/2 1/8" comando pneumatico 0.3 bar - ritorno a molla

5/2 1/8" pneumatic pilot 0.3 bar - spring return



Pressione di lavoro: min. 2.5 bar (0.25 MPa)
Pressione di comando: min. 0.3 bar (0.03 MPa)

Work pressure: min. 2.5 bar (0.25 MPa)
Pilot pressure: min. 0.3 bar (0.03 MPa)



valvole ad azionamento pneumatico

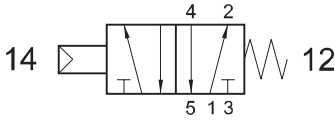
pneumatically piloted valves



521 MCS

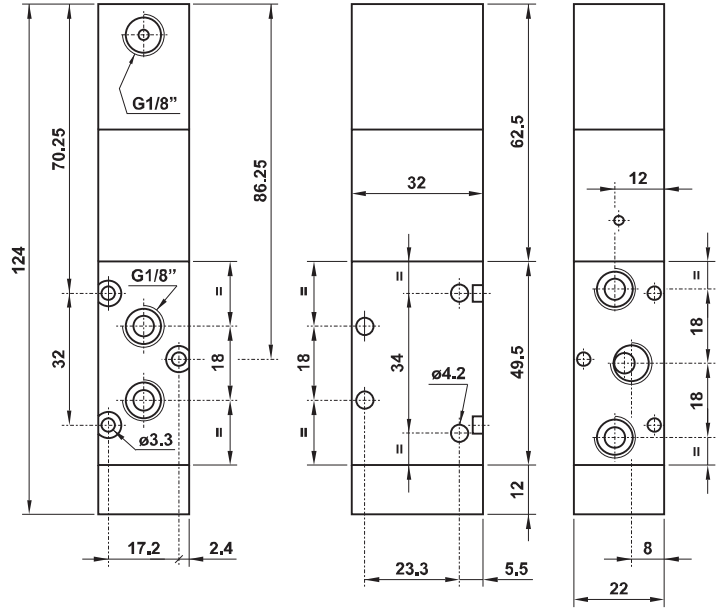
5/2 1/8" comando pneumatico 0.6 bar - ritorno a molla

5/2 1/8" pneumatic pilot 0.6 bar - spring return



Pressione di lavoro: min. 2.5 bar (0.25 MPa)
Pressione di comando: min. 0.6 bar (0.06 MPa)

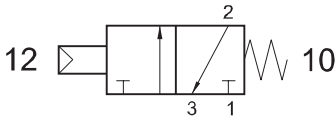
Work pressure: min. 2.5 bar (0.25 MPa)
Pilot pressure: min. 0.6 bar (0.06 MPa)



322 MCS

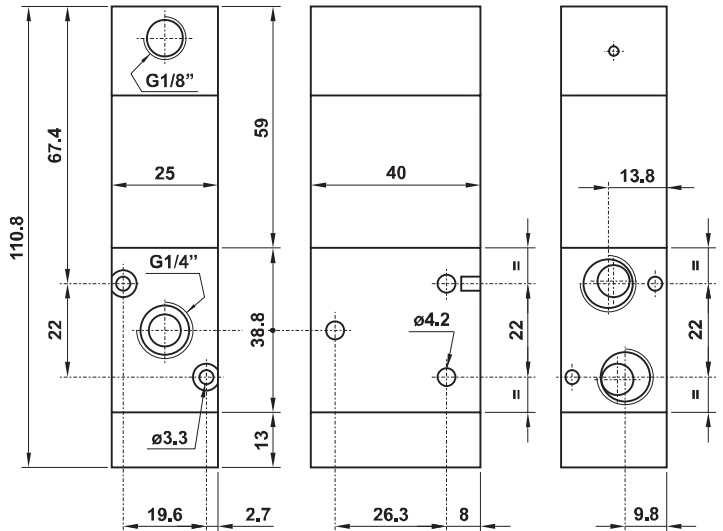
3/2 1/4" NC comando pneumatico 0.6 bar - ritorno a molla

3/2 1/4" NC pneumatic pilot 0.6 bar - spring return



Pressione di lavoro: min. 2.5 bar (0.25 MPa)
Pressione di comando: min. 0.6 bar (0.06 MPa)

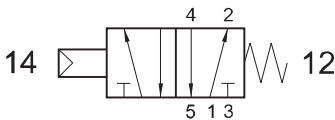
Work pressure: min. 2.5 bar (0.25 MPa)
Pilot pressure: min. 0.6 bar (0.06 MPa)



522 MCS

5/2 1/4" comando pneumatico 0.6 bar - ritorno a molla

5/2 1/4" pneumatic pilot 0.6 bar - spring return



Pressione di lavoro: min. 2.5 bar (0.25 MPa)
Pressione di comando: min. 0.6 bar (0.06 MPa)

Work pressure: min. 2.5 bar (0.25 MPa)
Pilot pressure: min. 0.6 bar (0.06 MPa)

