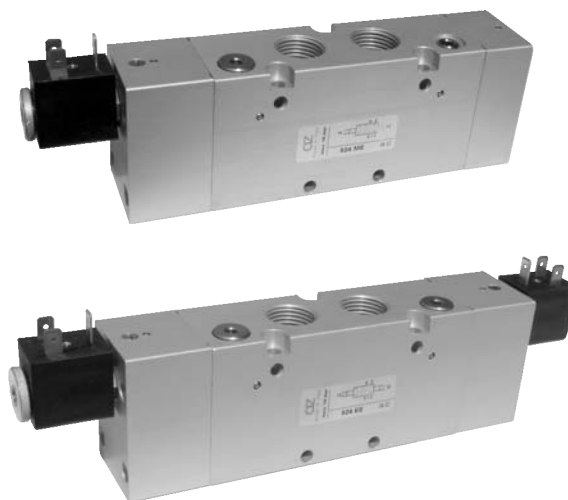


valvole G1/2" azionamento elettropneumatico

solenoid actuated valves - G1/2"



- Valvole a spola 3/2-5/2-5/3 con attacchi filettati G1/2"
3/2-5/2-5/3 spool valves with G1/2" threaded ports
- Elevatissima portata
Very high flow rate
- Montaggio in linea
Installation in-line
- Comandi elettrici con azionamento manuale bistabile
Solenoid pilots with detented manual override as standard
- Multifunzionalità e adattabilità
Multifunction feature



I prodotti di seguito indicati sono venduti senza bobine, da acquistarsi separatamente (vedi pag. 138).

The following listed products are sold without coils, which are bought separately (refer to page 138).

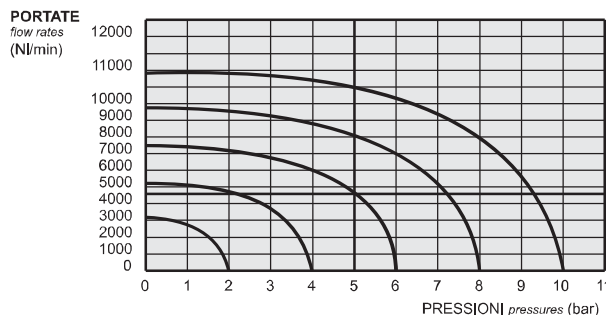
Kit ricambi - spare parts

02.030.2 : per valvole a 3 vie [for 3 way valves] ME - ME AS - MC

02.031.2 : per valvole a 5 vie [for 5 way valves] ME - ME AS - MC

02.032.2 : per valvole a 3 vie [for 3 way valves] EE - EE AS - CC

02.033.2 : per valvole a 5 vie [for 5 way valves] EE - EE AS - CC



Tempi di risposta - response times

monostabile <i>mono-stable</i>	TRA (14): 39 ms TRR (12): 60 ms
bistabile <i>bi-stable</i>	TRA (14): 90 ms TRR (12): 90 ms

Materiali

Corpo: alluminio 11S

Molle: INOX

Guarnizioni: NBR

Spola: INOX

Parti interne: ottone OT58

Materials

Body: aluminium 11S

Springs: stainless steel

Seals: NBR

Spool: stainless steel

Internal parts: brass OT58

Diametro nominale <i>Nominal orifice</i>		13 mm	
Portata nominale a 6 bar, Δp 1 bar <i>Nominal flow rate at 6 bar, Δp 1 bar</i>		4600 NI/min	
Temperatura di esercizio <i>Temperature range</i>		max +60°C	
Pressione di esercizio <i>Working pressure</i>	al. interna monost. [monost. internal air supply]	al. interna bist. [bi-stable internal air supply]	alim. separata [separate air supply]
	2.5 ... 10 bar 0.25 ... 1 MPa	1 ... 10 bar 0.1 ... 1 MPa	max 10 bar max 1 MPa
Pressione di azionamento (per alimentazione separata) <i>Actuating pressure (for separate air supply)</i>	monostabile [mono-stable]		bistabile [bi-stable]
	2.5 ... 10 bar 0.25 ... 1 MPa		1 ... 10 bar 0.1 ... 1 MPa
Fluido <i>Fluid</i>	Aria filtrata 50 μ con o senza lubrificazione <i>50μ filtered, lubricated or non lubricated air</i>		

valvole G1/2" azionamento elettropneumatico

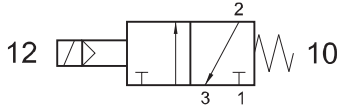
solenoid actuated valves - G1/2"



324 ME

3/2 1/2" NC comando elettrico - ritorno a molla

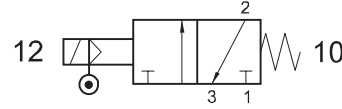
3/2 1/2" NC solenoid pilot - spring return



324 ME AS

3/2 1/2" comando elettrico alimentazione separata - ritorno a molla

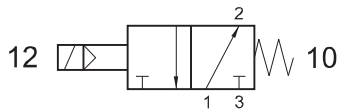
3/2 1/2" solenoid pilot with separate air supply - spring return



324 MEA

3/2 1/2" NA comando elettrico - ritorno a molla

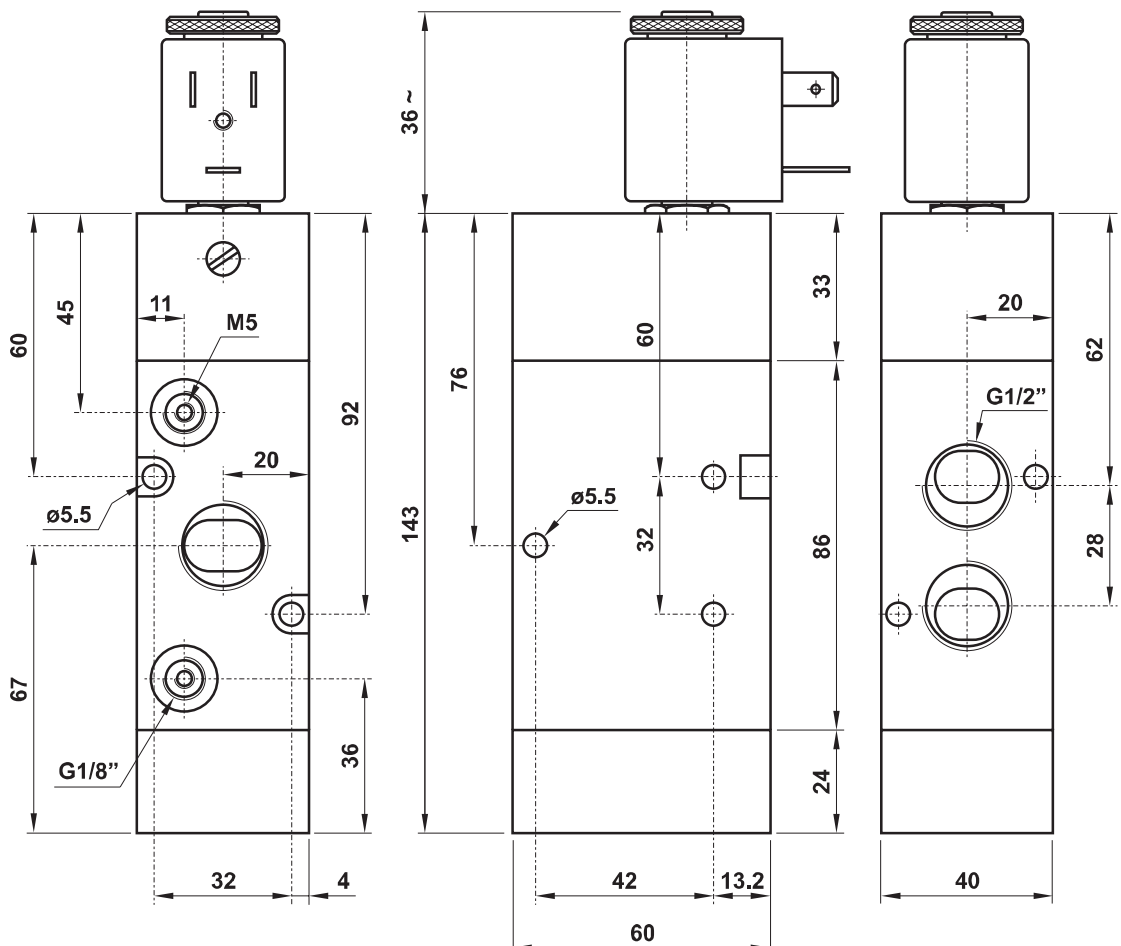
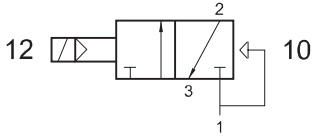
3/2 1/2" NO solenoid pilot - spring return



324 EFP

3/2 1/2" NC comando elettrico - ritorno a molla pneumatica

3/2 1/2" NC solenoid pilot - pneumatic spring return



valvole G1/2" azionamento elettropneumatico

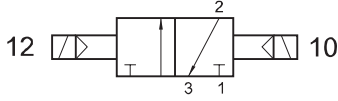
solenoid actuated valves - G1/2"



324 EE

3/2 1/2" doppio comando elettrico

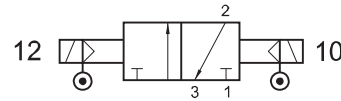
3/2 1/2" double solenoid pilot



324 EE AS

3/2 1/2" doppio comando elettrico alimentazione separata

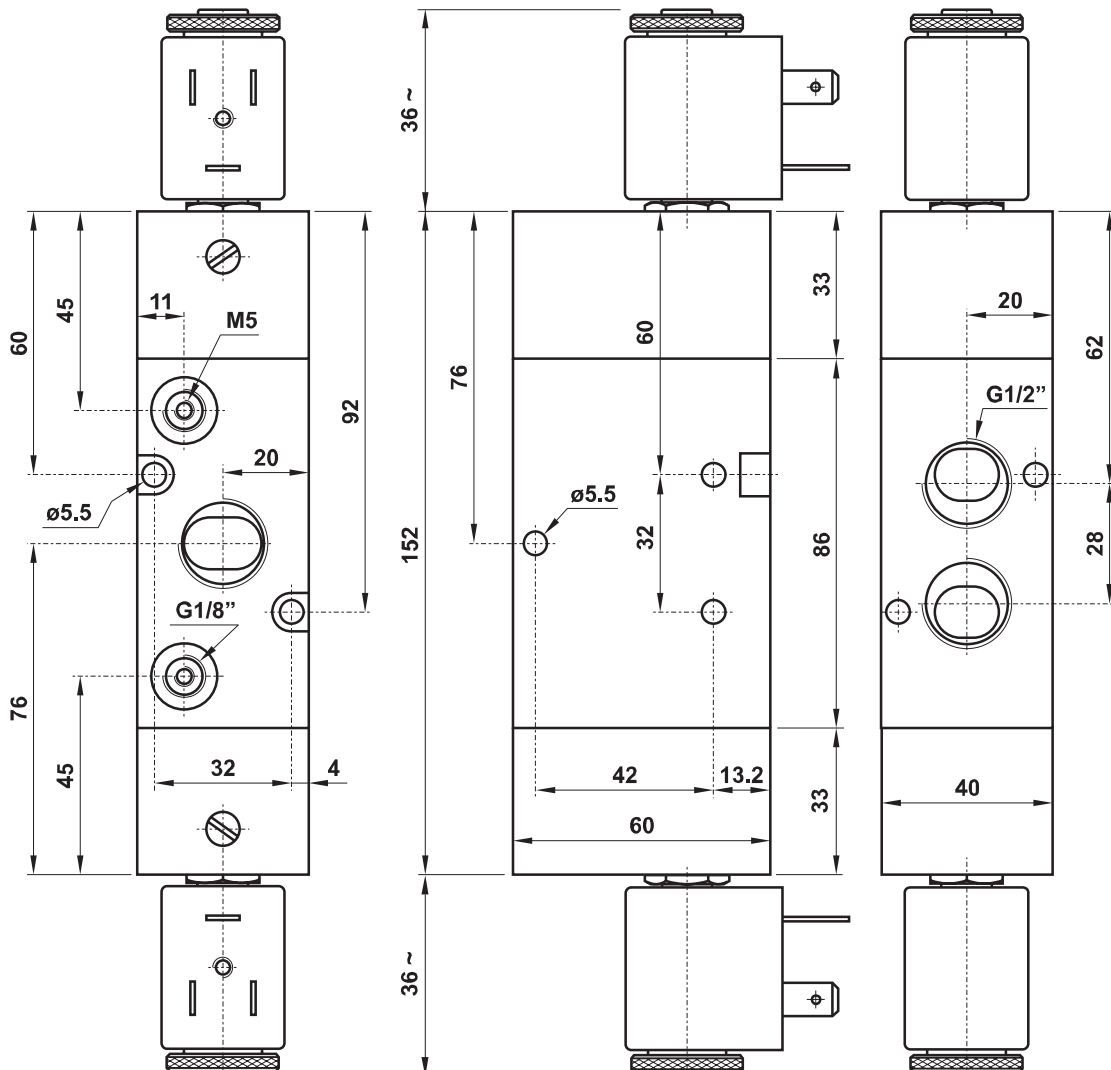
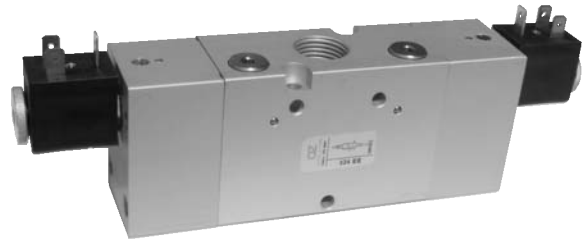
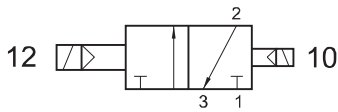
3/2 1/2" double solenoid pilot with separate air supply



324 EED

3/2 1/2" doppio comando elettrico - con differenziale

3/2 1/2" double solenoid pilot - with differential



valvole G1/2" azionamento elettropneumatico

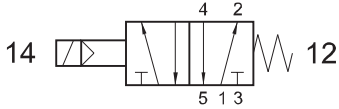
solenoid actuated valves - G1/2"



524 ME

5/2 1/2" comando elettrico - ritorno a molla

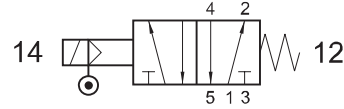
5/2 1/2" solenoid pilot - spring return



524 ME AS

5/2 1/2" comando elettrico alimentazione separata - ritorno a molla

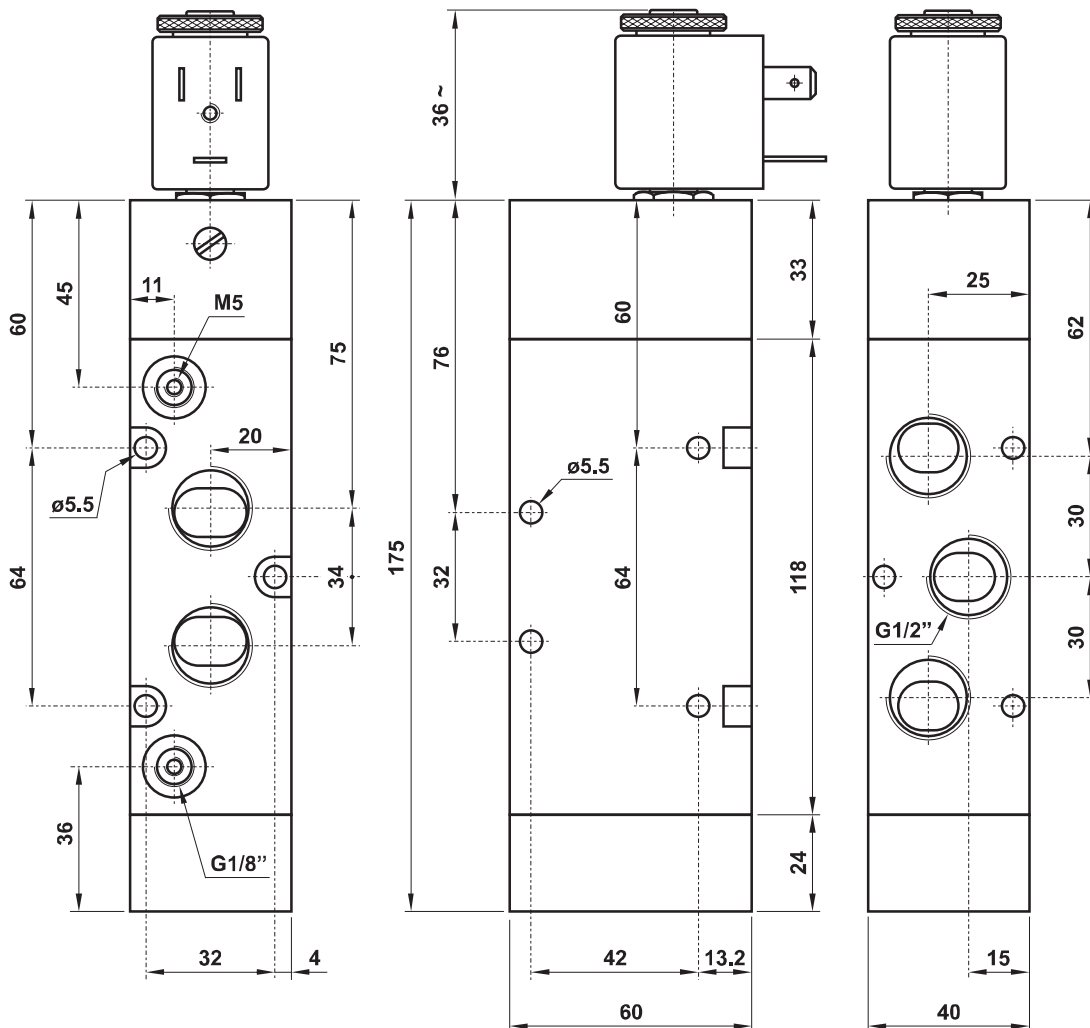
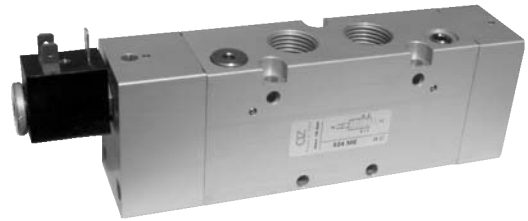
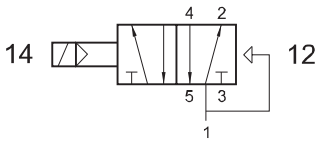
5/2 1/2" solenoid pilot with separate air supply - spring return



524 EFP

5/2 1/2" comando elettrico - ritorno a molla pneumatica

5/2 1/2" solenoid pilot - pneumatic spring return



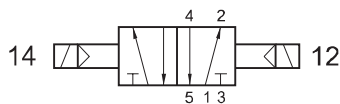
valvole G1/2" azionamento elettropneumatico

solenoid actuated valves - G1/2"



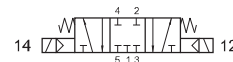
524 EE

5/2 1/2" doppio comando elettrico
5/2 1/2" double solenoid pilot



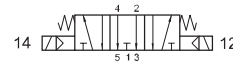
5243C EE

centri chiusi
closed centres



5243A EE

centri aperti
open centres



5243P EE

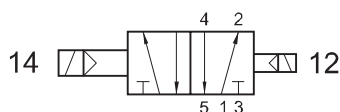
centri in pressione
pressurized centres



5/3 1/2" doppio comando elettrico
5/3 1/2" double solenoid pilot

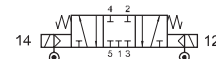
524 EED

5/2 1/2" doppio comando elettrico - con differenziale
5/2 1/2" double solenoid pilot - with differential



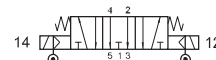
5243C EE AS

centri chiusi
closed centres



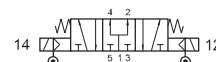
5243A EE AS

centri aperti
open centres



5243P EE AS

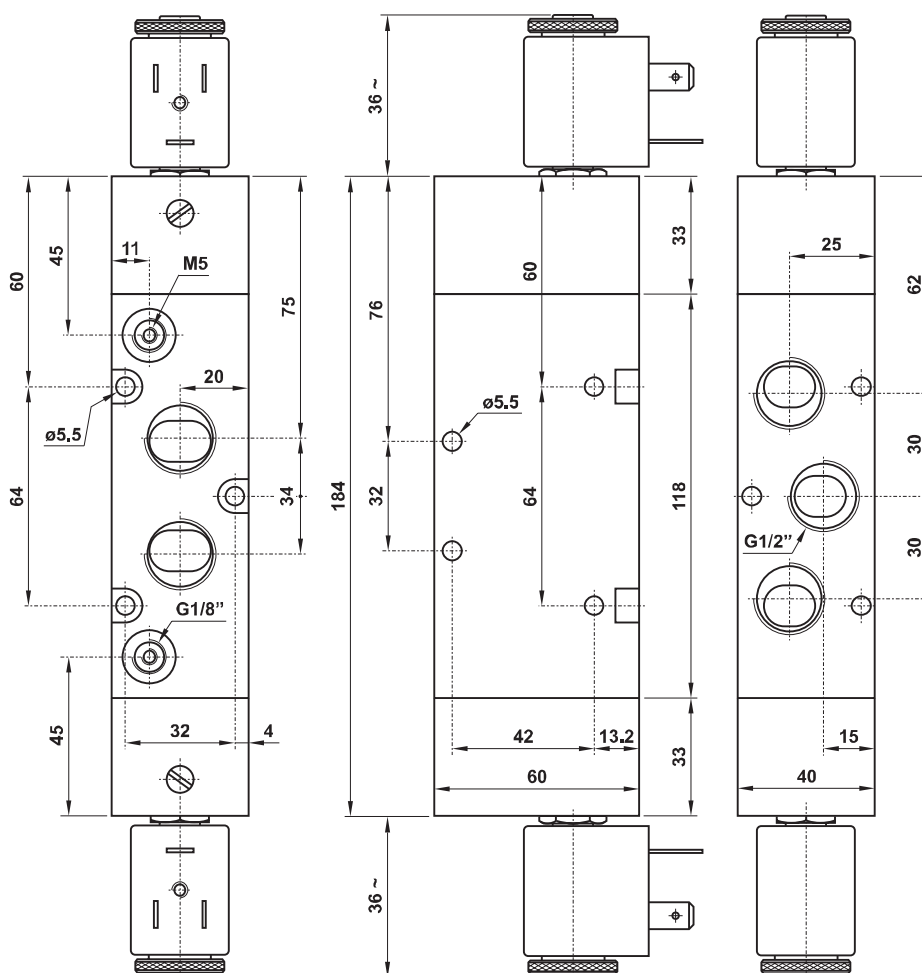
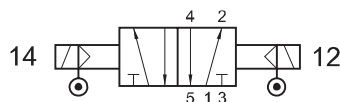
centri in pressione
pressurized centres



5/3 1/2" doppio comando elettrico alimentazione separata
5/3 1/2" double solenoid pilot with separate air supply

524 EE AS

5/2 1/2" doppio comando elettrico alimentazione separata
5/2 1/2" double solenoid pilot with separate air supply



bobine e connettori 22 mm

22 mm coils and connectors



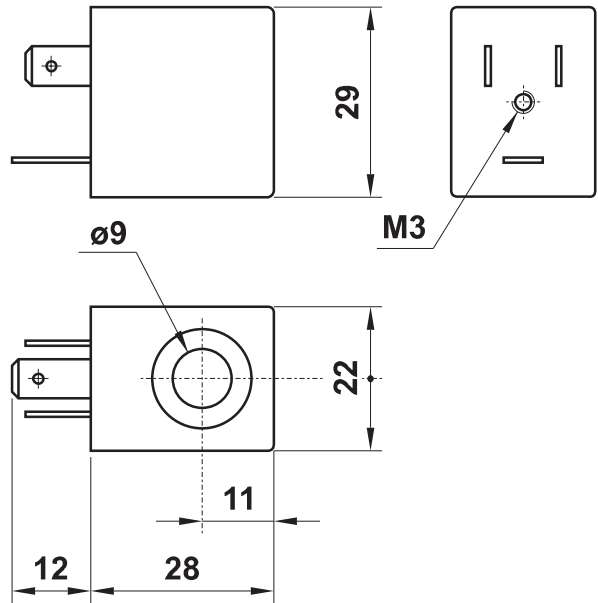
22 mm



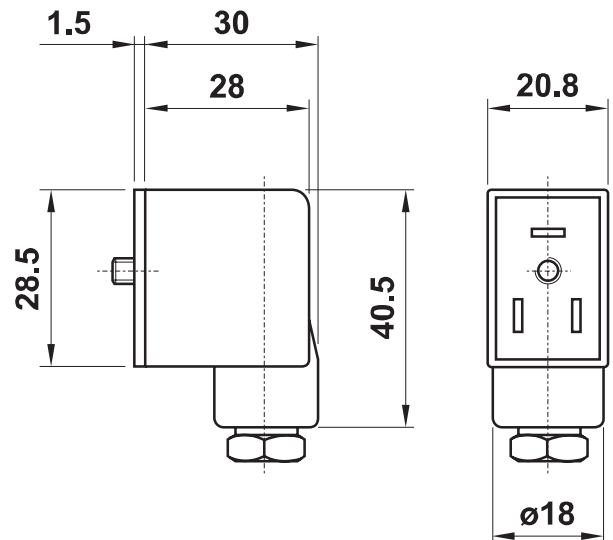
temperatura max di esercizio	+50°C	<i>max working temperature</i>
inserimento	ED 100%	<i>duty cycle</i>
protezione con connettore correttamente montato	IP 65	<i>protection with connector correctly mounted</i>
tolleranza di tensione	±10%	<i>tension tolerance</i>

- a richiesta basso assorbimento 1.5W
low consumption (1.5W) on request

codice <i>code</i>	tensione <i>tension</i>	consumo - power	
		a regime <i>rated</i>	di spunto <i>inrush</i>
00.167.0	12V DC	3W	
00.028.0	24V DC	3W	
00.029.0	24V 50/60Hz	5VA	7.5VA
00.030.0	110V 50/60Hz	5VA	7.5VA
00.031.0	220V 50/60Hz	5VA	7.5VA



codice <i>code</i>	colore <i>colour</i>	cavo <i>cable</i>	tipo <i>type</i>
00.197.0	nero <i>black</i>	PG09	normale <i>standard</i>
00.344.0	trasparente <i>transparent</i>	PG09	con LED 24V <i>with LED 24V</i>
00.345.0	trasparente <i>transparent</i>	PG09	con LED 24V e VDR <i>with LED 24V and VDR</i>
00.346.0	trasparente <i>transparent</i>	PG09	con LED 115V <i>with LED 115V</i>
00.347.0	trasparente <i>transparent</i>	PG09	con LED 115V e VDR <i>with LED 115V and VDR</i>
00.394.0	trasparente <i>transparent</i>	PG09	con LED 230V <i>with LED 230V</i>
00.395.0	trasparente <i>transparent</i>	PG09	con LED 230V e VDR <i>with LED 230V and VDR</i>



PEZZI DI RICAMBIO - spare parts
canotto per elettropilota
armature for solenoid pilot

NC : 00.088.0
NA (NO) : 00.306.0