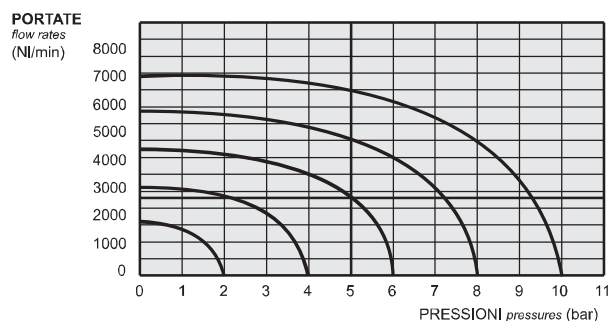
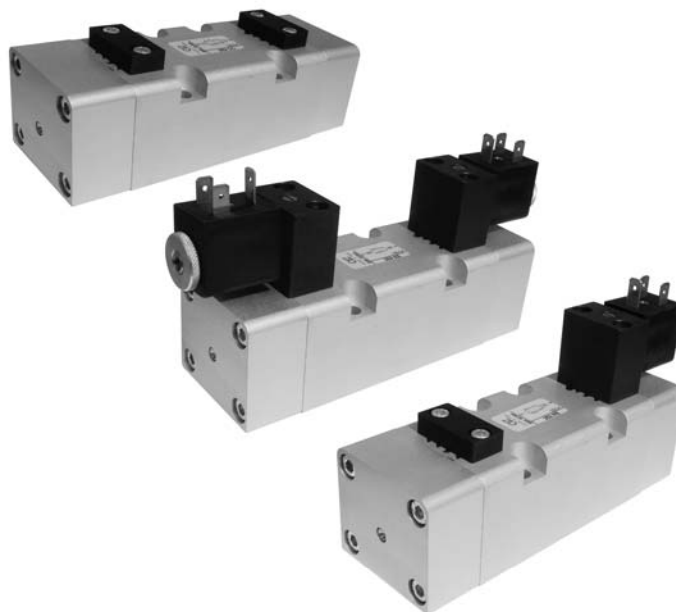


# valvole ISO 5599/1 taglia 2

ISO 5599/1 valves - size 2



- Valvole a spola 5/2-5/3  
*5/2-5/3 spool valves*
- Montaggio su basi modulari  
*Installation on multiple sub-bases*
- Azionatore manuale bistabile sull'elettropilota  
*Detented manual override on the solenoid pilot*
- Riarmo manuale della valvola  
*Manual reset*



I prodotti di seguito indicati sono venduti senza bobine, da acquistarsi separatamente (vedi pag. 184-185).  
The following listed products are sold without coils, which are bought separately (refer to page 184-185).

## Tempi di risposta - response times

	az. pneumatico <i>pneumatic pilot</i>	az. elettrico <i>solenoid pilot</i>
monostabile <i>mono-stable</i>	TRA (14): 24 ms TRR (12): 43 ms	TRA (14): 39 ms TRR (12): 60 ms
bistabile <i>bi-stable</i>	TRA (14): 30 ms TRR (12): 30 ms	TRA (14): 90 ms TRR (12): 90 ms

## Materiali

**Corpo:** alluminio 11S  
**Molle:** INOX  
**Guarnizioni:** NBR  
**Spola:** alluminio nichelato  
**Parti interne:** ottone OT58

## Materials

**Body:** aluminium 11S  
**Springs:** stainless steel  
**Seals:** NBR  
**Spool:** nickel plated aluminium  
**Internal parts:** brass OT58

Diametro nominale <i>Nominal orifice</i>	9 mm		
Temperatura di esercizio <i>Temperature range</i>	max +60°C		
Pressione di esercizio <i>Working pressure</i>	al. interna monost. [monost. internal air supply]	al. interna bist. [bi-stable internal air supply]	alim. separata [separate air supply]
	2.5 ... 10 bar 0.25 ... 1 MPa	1 ... 10 bar 0.1 ... 1 MPa	max 10 bar max 1 MPa
Pressione di azionamento (per alimentazione separata) <i>Actuating pressure (for separate air supply)</i>	monostabile [mono-stable]		bistabile [bi-stable]
	2.5 ... 10 bar 0.25 ... 1 MPa		1 ... 10 bar 0.1 ... 1 MPa
Fluido <i>Fluid</i>	Aria filtrata 50µ con o senza lubrificazione 50µ filtered, lubricated or non lubricated air		

# valvole ISO 5599/1 taglia 2

ISO 5599/1 valves - size 2

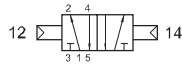


## 252 MC



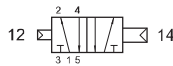
5/2 comando pneumatico - ritorno a molla  
5/2 pneumatic pilot - spring return

## 252 CC



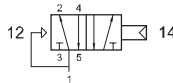
5/2 doppio comando pneumatico  
5/2 double pneumatic pilot

## 252 CCD



5/2 doppio comando pneumatico - con differenziale  
5/2 double pneumatic pilot - with differential

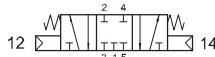
## 252 CFP



5/2 comando pneumatico - ritorno a molla pneumatica  
5/2 pneumatic pilot - pneumatic spring return

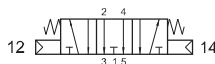
## 253C CC

centri chiusi  
closed centres



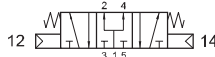
## 253A CC

centri aperti  
open centres



## 253P CC

centri in pressione  
pressurized centres



5/3 doppio comando pneumatico  
5/3 double pneumatic pilot

