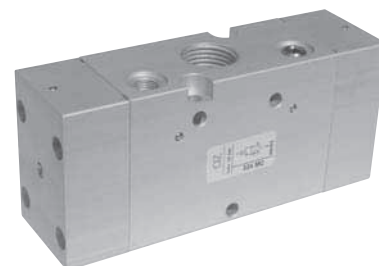
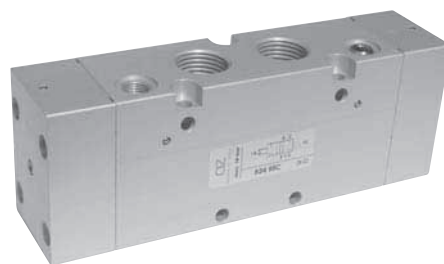


# valvole G1/2" azionamento pneumatico

*pneumatically piloted valves - G1/2"*



- Valvole a spola 3/2-5/2-5/3 con attacchi filettati G1/2"  
*3/2-5/2-5/3 spool valves with G1/2" threaded ports*
- Elevatissima portata  
*Very high flow rate*
- Montaggio in linea  
*Installation in-line*
- Azionamento pneumatico monostabile o bistabile  
*Mono-stable or bi-stable pneumatic pilot*
- Multifunzionalità e adattabilità  
*Multifunction feature*



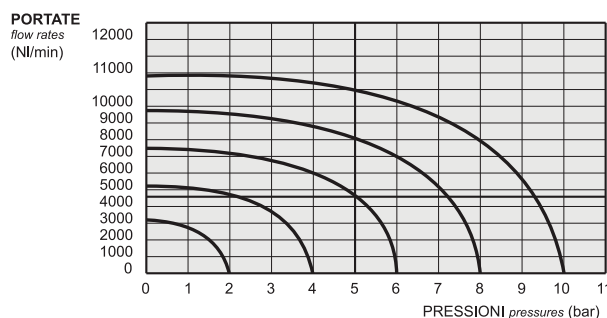
## Kit ricambi - spare parts

**02.030.2** : per valvole a 3 vie [for 3 way valves] ME - ME AS - MC

**02.031.2** : per valvole a 5 vie [for 5 way valves] ME - ME AS - MC

**02.032.2** : per valvole a 3 vie [for 3 way valves] EE - EE AS - CC

**02.033.2** : per valvole a 5 vie [for 5 way valves] EE - EE AS - CC



## Tempi di risposta - response times

monostabile <i>mono-stable</i>	TRA (14): 24 ms TRR (12): 43 ms
bistabile <i>bi-stable</i>	TRA (14): 30 ms TRR (12): 30 ms

## Materiali

Corpo: alluminio 11S

Molle: INOX

Guarnizioni: NBR

Spola: alluminio nichelato

Parti interne: ottone OT58

## Materials

Body: aluminium 11S

Springs: stainless steel

Seals: NBR

Spool: nickel plated aluminium

Internal parts: brass OT58

Diametro nominale <i>Nominal orifice</i>	13 mm	
Portata nominale a 6 bar, Δp 1 bar <i>Nominal flow rate at 6 bar, Δp 1 bar</i>	4600 NI/min	
Temperatura di esercizio <i>Temperature range</i>	max +60°C	
Pressione di esercizio <i>Working pressure</i>	monostabile [mono-stable]	bistabile [bi-stable]
	2.5 ... 10 bar 0.25 ... 1 MPa	-0.9 ... 10 bar -0.09 ... 1 MPa
Pressione di azionamento <i>Actuating pressure</i>	monostabile [mono-stable]	bistabile [bi-stable]
	2.5 ... 10 bar 0.25 ... 1 MPa	1 ... 10 bar 0.1 ... 1 MPa
Fluido <i>Fluid</i>	Aria filtrata 50μ con o senza lubrificazione <i>50μ filtered, lubricated or non lubricated air</i>	

# valvole G1/2" azionamento pneumatico

*pneumatically piloted valves - G1/2"*



## Multifunzionalità e adattabilità della valvola

La funzione della valvola può essere variata in ogni momento secondo necessità cambiando la posizione dei tappi da M5 e G1/8" collocati nel corpo secondo gli schemi sottoriportati.

La valvola è fornita nella configurazione richiesta al momento dell'ordine. Eventuali tappi aggiuntivi possono essere ordinati separatamente.

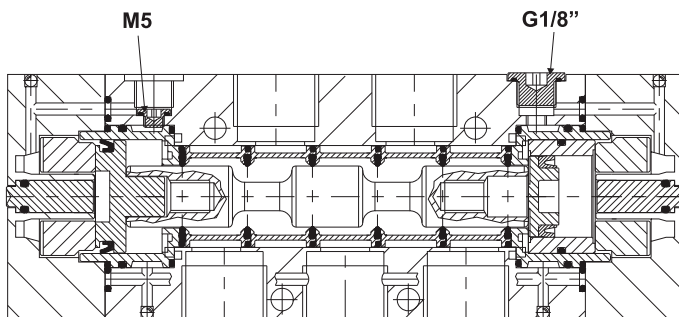
## Multifunction feature of the valve

*The function of the valve can be changed in any moment. To do this it is enough to change the position of the plugs M5 and G1/8", which are inserted into the body according to the scheme.*

*The valve is supplied in the configuration specified on the order. More plugs can be ordered separately.*

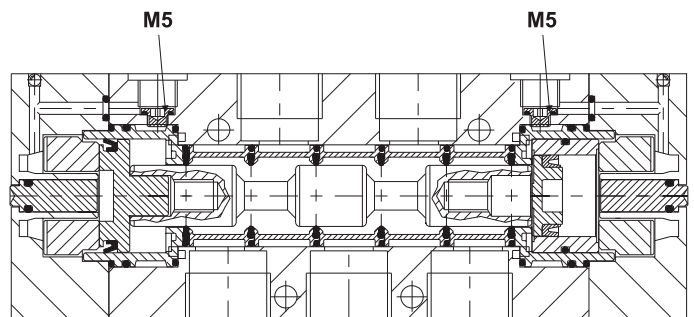
**324 CFP**

**524 CFP**



**324 CCD**

**524 CCD**



# valvole G1/2" azionamento pneumatico

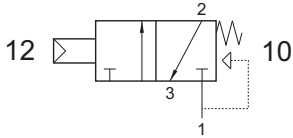
*pneumatically piloted valves - G1/2"*



## 324 MC

3/2 1/2" NC comando pneumatico - ritorno a molla

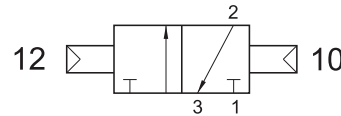
*3/2 1/2" NC pneumatic pilot - spring return*



## 324 CC

3/2 1/2" doppio comando pneumatico

*3/2 1/2" double pneumatic pilot*

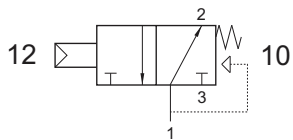


Può essere utilizzata con vuoto.  
*It can be used with vacuum.*

## 324 MCA

3/2 1/2" NA comando pneumatico - ritorno a molla

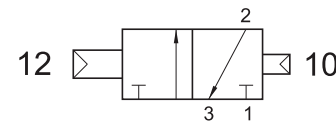
*3/2 1/2" NO pneumatic pilot - spring return*



## 324 CCD

3/2 1/2" doppio comando pneumatico - con differenziale

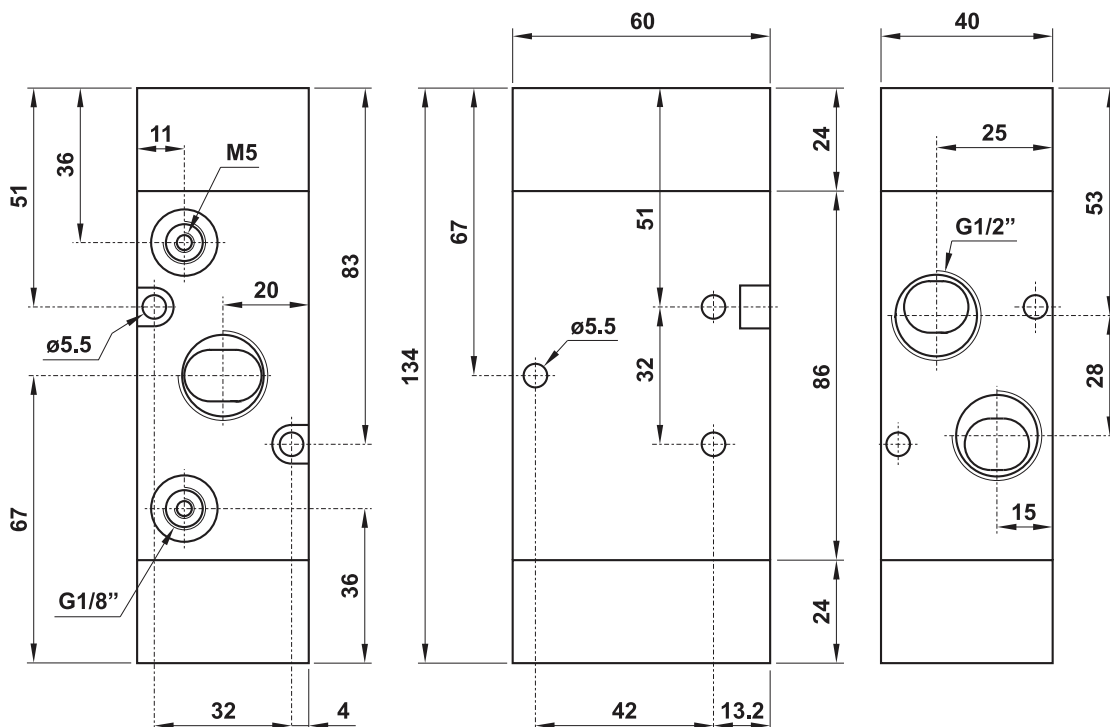
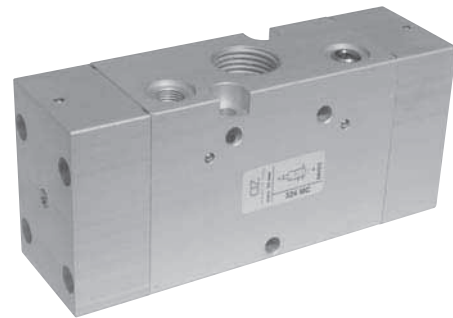
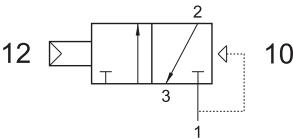
*3/2 1/2" double pneumatic pilot - with differential*



## 324 CFP

3/2 1/2" NC comando pneumatico - ritorno a molla pneumatica

*3/2 1/2" NC pneumatic pilot - pneumatic spring return*



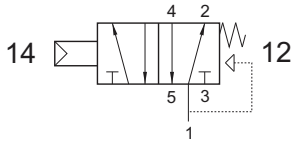
# valvole G1/2" azionamento pneumatico

*pneumatically piloted valves - G1/2"*



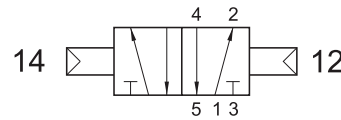
## 524 MC

5/2 1/2" comando pneumatico - ritorno a molla  
5/2 1/2" *pneumatic pilot - spring return*



## 524 CC

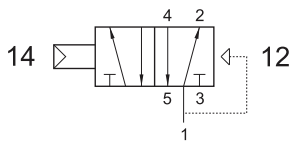
5/2 1/2" doppio comando pneumatico  
5/2 1/2" *double pneumatic pilot*



Può essere utilizzata con vuoto.  
*It can be used with vacuum.*

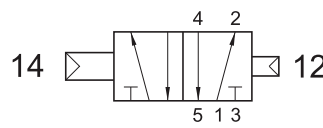
## 524 CFP

5/2 1/2" comando pneumatico - ritorno a molla pneumatica  
5/2 1/2" *pneumatic pilot - pneumatic spring return*



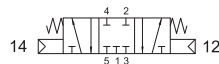
## 524 CCD

5/2 1/2" doppio comando pneumatico - con differenziale  
5/2 1/2" *double pneumatic pilot - with differential*



## 5243C CC

centri chiusi  
*closed centres*



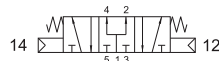
## 5243A CC

centri aperti  
*open centres*



## 5243P CC

centri in pressione  
*pressurized centres*



5/3 1/2" doppio comando pneumatico  
5/3 1/2" *double pneumatic pilot*

