

# Solenoid/pneumatic valves, ISO 5599-1

Accessories

FESTO

## Intermediate pressure regulator plate LR-ZP



Material:  
Housing:  
Die-cast aluminium, steel  
Seals:  
Nitrile rubber

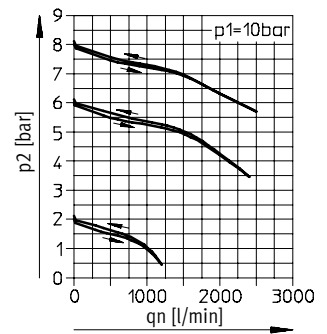
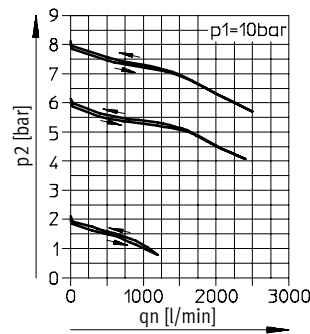
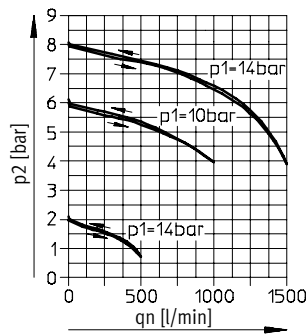
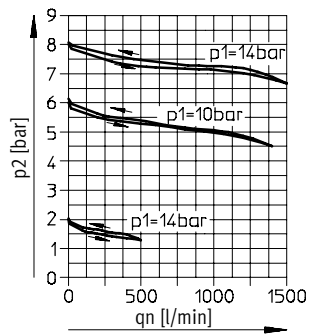
### Flow rate $q_n$ as a function of the output pressure $p_2$

LR-ZP-A-D-1, LR-ZP-B-1,  
LR-ZP-A/B-1

LR-ZP-P-D-1

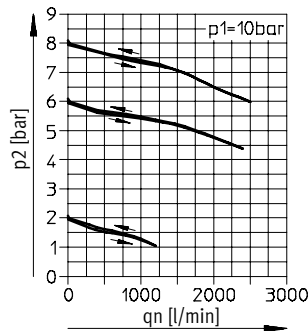
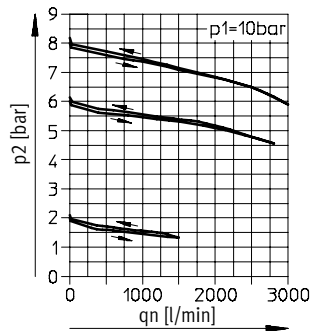
LR-ZP-A-D-2, LR-ZP-B-2,  
LR-ZP-A/B-2

LR-ZP-P-D-2



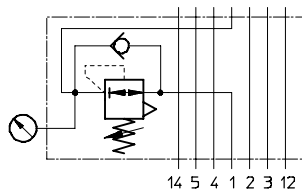
LR-ZP-A-D-3, LR-ZP-B-3,  
LR-ZP-A/B-3

LR-ZP-P-D-3

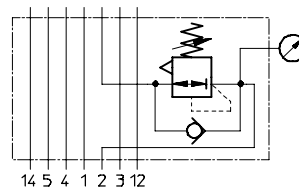


### Pressure regulation

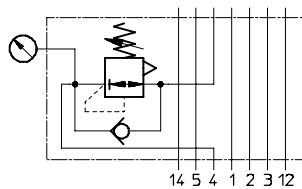
Port 1 regulated



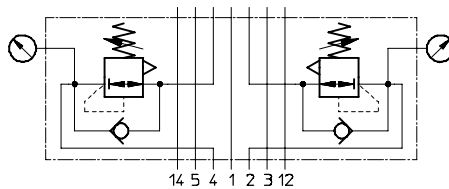
Port 2 regulated



Port 4 regulated



Ports 2 and 4 regulated



# Solenoid/pneumatic valves, ISO 5599-1

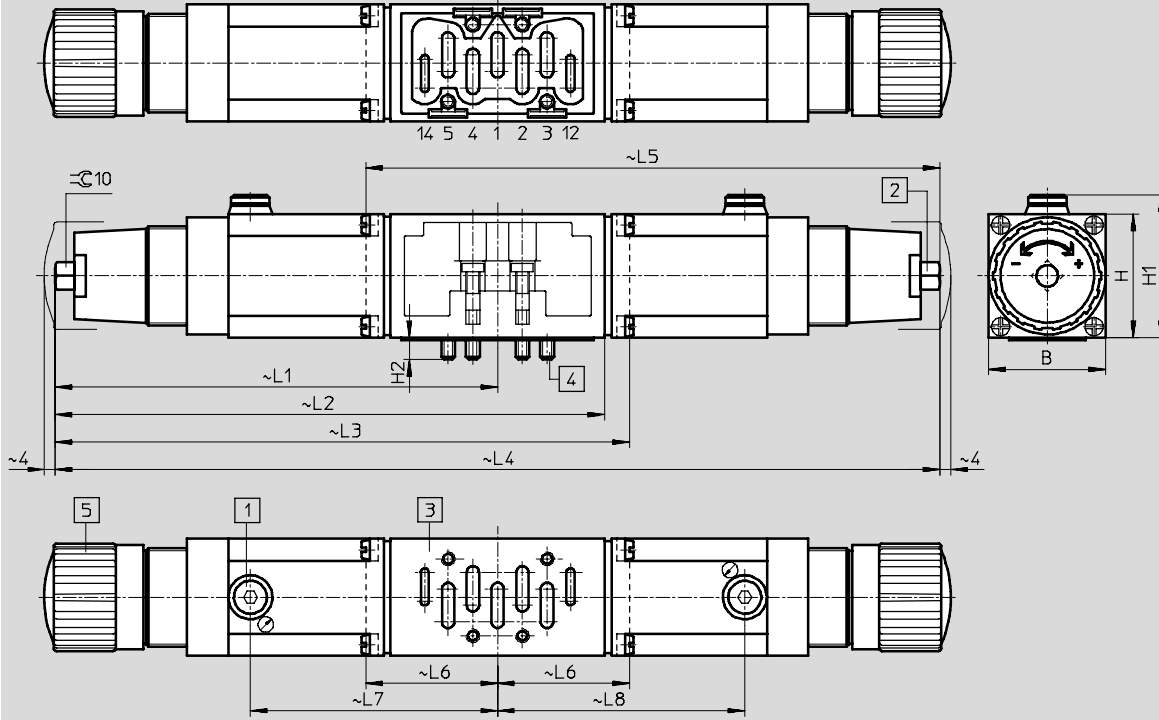
Accessories

FESTO

## Dimensions

Download CAD data → [www.festo.com](http://www.festo.com)

Intermediate pressure regulator plates LR-ZP – ISO size 1, 2, 3



- |  |                              |                   |
|--|------------------------------|-------------------|
| 1 Pressure gauge connection<br>G $\frac{1}{8}$ | 3 Port pattern to ISO 5599-1 | 5 Regulating knob |
| 2 Regulating screw                             | 4 Captive mounting screws    |                   |

# Solenoid/pneumatic valves, ISO 5599-1

FESTO

Accessories

Dimensions and ordering data																				
Regulated port	B	H	H1	H2	L1	L2	L3	L4	L5	L6	L7	L8	Weight [g]	Part No.	Type					
<b>ISO size 1</b>																				
1	42.6	45	52	8	161	-	209	-	-	48	90	-	520	35 966	LR-ZP-P-D-1					
																	165 859	LR-ZP-P-D-1-CT <sup>1)</sup>		
2												209	48	-	90	520	35 424	LR-ZP-B-D-1		
																		165 856	LR-ZP-B-D-1-CT <sup>1)</sup>	
4					161	-	-	322	-	-	90	90	520	35 969	LR-ZP-A-D-1					
															165 850	LR-ZP-A-D-1-CT <sup>1)</sup>				
2, 4					161	200	-	-	-	-	90	-	840	35 427	LR-ZP-A/B-D-1					
															165 853	LR-ZP-A/B-D-1-CT <sup>1)</sup>				
<b>ISO size 2</b>																				
1	54	58	62.5	10	188	-	247	-	-	-	105.5	-	960	35 967	LR-ZP-P-D-2					
																		165 860	LR-ZP-P-D-2-CT <sup>1)</sup>	
2									-	-	-	-	247	59	-	105.5	960	35 425	LR-ZP-B-D-2	
																			165 857	LR-ZP-B-D-2-CT <sup>1)</sup>
4					188	-	-	376	-	-	105.5	105.5	960	35 970	LR-ZP-A-D-2					
															165 851	LR-ZP-A-D-2-CT <sup>1)</sup>				
2, 4					188	233	-	-	-	-	105.5	-	1490	35 428	LR-ZP-A/B-D-2					
															165 854	LR-ZP-A/B-D-2-CT <sup>1)</sup>				
<b>ISO size 3</b>																				
1	70	63	65	14	201.5	-	274	-	-	-	119	-	1220	35 968	LR-ZP-P-D-3					
																			165 861	LR-ZP-P-D-3-CT <sup>1)</sup>
2											-	-	-	274	72.5	-	119	1220	35 426	LR-ZP-B-D-3
																				165 858
4						-	-	403	-	-	119	119	1220	35 971	LR-ZP-A-D-3					
															165 852	LR-ZP-A-D-3-CT <sup>1)</sup>				
2, 4						260	-	-	-	-	119	-	1770	35 429	LR-ZP-A/B-D-3					
															165 855	LR-ZP-A/B-D-3-CT <sup>1)</sup>				

1) Free of copper, PTFE and silicone

- | - Note: This product conforms with the ISO 1179-1 standard and the ISO 228-1 standard.

Ordering data – Pressure gauge for intermediate pressure regulator plates LR-ZP			
ISO size	Weight [g]	Part No.	Type
1, 2, 3	64.5	345 395	MA-40-16-1/8