

# raccordi automatici in ottone

push-in fittings фитинги цанговые быстроразъёмные

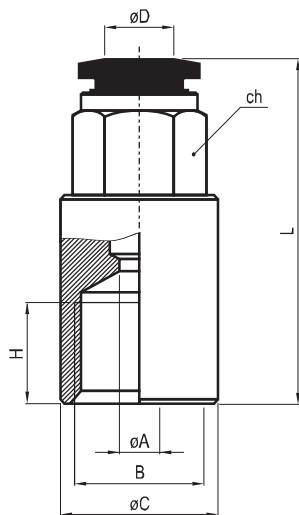


## RP030

Raccordo diritto femmina

*Straight female fitting*

Όμοειά ι?υίί έ ν άρ 60? αί ί αέ 666ί ά?ε+ανεί έ  
?αçuái έ



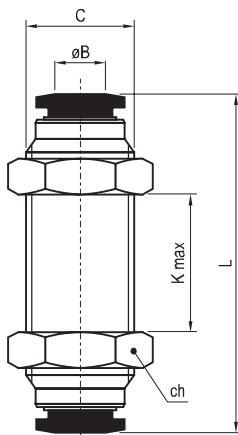
tubo (øD) tube ο?όaea	B	οA	οC	H	L	ch	confez. package óiae.	codice code eí ä
4	G1/8"	3	12	6.5	26.5	9	50	36.020.0
4	G1/4"	3	17	10	29.5	9	50	36.021.0
5	G1/8"	4	12	6.5	27	10	50	36.022.0
5	G1/4"	4	16	10	30	10	50	36.023.0
6	G1/8"	5	12	6.5	27	11	50	36.024.0
6	G1/4"	5	17	10	31	11	50	36.025.0
8	G1/8"	7	12	6.5	28	13	50	36.026.0
8	G1/4"	7	17	10	32	13	50	36.027.0

## RP050

Raccordo diritto intermedio passaparete

*Intermediate straight connector for panel mounting*

Όμοειά α-ní αάεί εοαëü ι?υίί έ ν ίί ί οαί ί έ  
?αçuái έ ί α εί ?ίona e ααéεaie



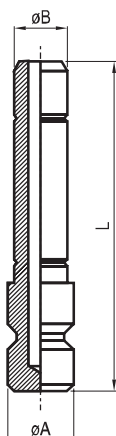
tubo (øB) tube ο?όaea	C	L	K max	ch	confez. package óiae.	codice code eí ä
4	M10x1	32	8	13	50	36.102.0
5	M11x1	33	8	14	50	36.103.0
6	M14x1	33.5	8	17	50	36.104.0
8	M16x1	37	10	18	50	36.105.0
10	M17x1	39.5	12	20	25	36.106.0
12	M20x1	42	17	24	25	36.107.0
14	M22x1	45	18	25	25	36.108.0

## RP610

Tappo

*Plug*

Çααéóoa



øB	øA	L	confez. package óiae.	codice code eí ä
4	5	25.5	50	36.095.0
5	6	26.5	50	36.096.0
6	7	27.5	50	36.097.0
8	9	30	50	36.098.0
10	11	35	25	36.099.0
12	13	37	25	36.100.0
14	15	39.5	25	36.101.0