

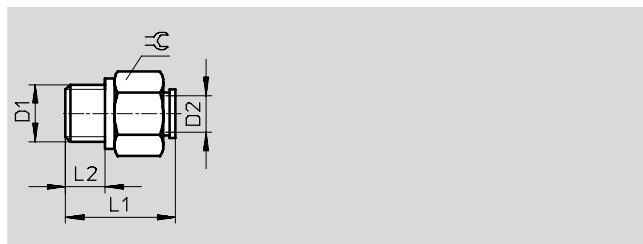
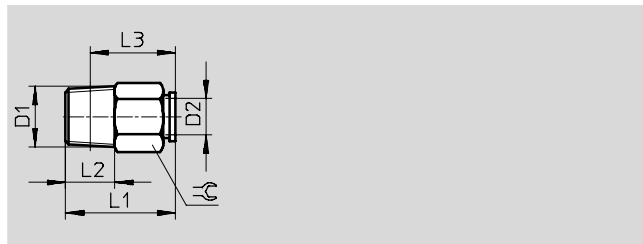
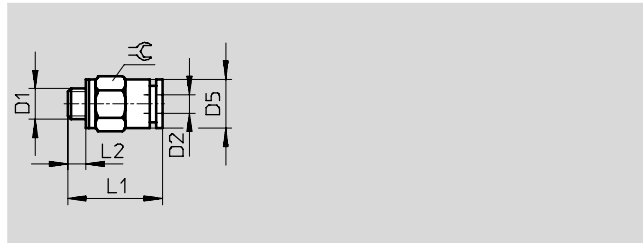
Push-in fittings QSM, Quick Star, mini

FESTO

Technical data

Push-in fitting QSM

Male thread
with external hex



Dimensions and ordering data											
Connection	Nominal size	Tubing O.D.	D5	L1	L2	L3	⌀	Weight/ piece	Part No.	Type	PU*
D1	[mm]	D2	∅					[g]			
Metric thread with sealing ring											
M3	0.9	3	5.5	14	3.3	-	5.5	1.1	153 301	QSM-M3-3	10
									130 775	QSM-M3-3-100	100
	1.1	4	8	16.5	3.3	-	8	2.5	153 303	QSM-M3-4	10
									130 776	QSM-M3-4-100	100
M5	2	3	8	16.7	3.5	-	8	3.5	153 302	QSM-M5-3	10
									130 777	QSM-M5-3-100	100
	2.2	4	8	16.7	3.5	-	8	3.3	153 304	QSM-M5-4	10
									130 778	QSM-M5-4-100	100
	2.1	6	10	17.8	3.5	-	10	4.5	153 306	QSM-M5-6	10
									130 779	QSM-M5-6-100	100
R thread											
R1/8	2.9	4	-	16	8	12	10	6	153 305	QSM-1/8-4	10
									130 755	QSM-1/8-4-100	100
	4.5	6	-	18	8	14	10	6	153 307	QSM-1/8-6	10
									130 756	QSM-1/8-6-100	100
G thread with sealing ring											
G1/8	2.9	4	-	16.4	5.1	-	13	9.4	186 264	QSM-G1/8-4	10
	2.8	6	-	18.4	5.1	-	13	11	186 265	QSM-G1/8-6	10

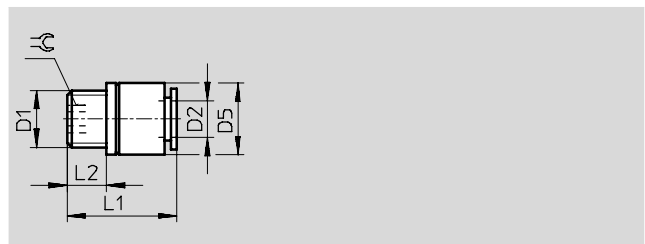
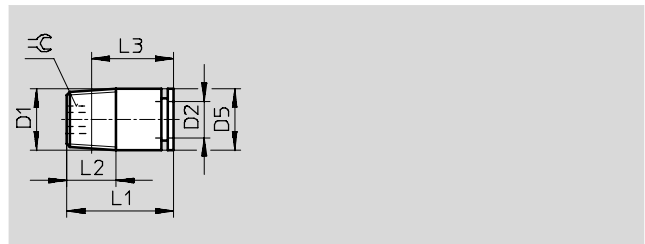
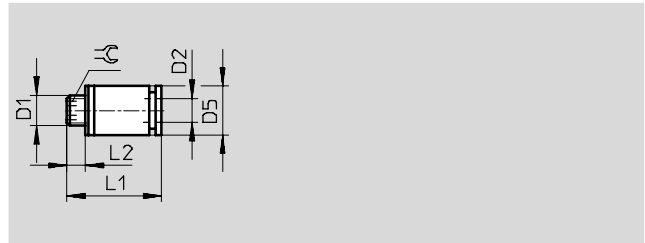
* Packaging unit quantity

Push-in fittings QSM, Quick Star, mini

Technical data

Push-in fitting QSM-...-I

Male thread
with internal hex



Dimensions and ordering data											
Connection	Nominal size	Tubing O.D.	D5	L1	L2	L3	⌀	Weight/ piece	Part No.	Type	PU*
D1	[mm]	D2	∅					[g]			
Metric thread with sealing ring											
M3	1.6	3	8	16.5	3.3	-	1.5	3	153 312	QSM-M3-3-I	10
	1.5	4	8	16.5	3.3	-	1.5	3	153 314	QSM-M3-4-I	10
M5	1.9	3	8	16.7	3.5	-	2	3	153 313	QSM-M5-3-I	10
	2.5	4	8	16.7	3.5	-	2.5	4	153 315	QSM-M5-4-I	10
	2.6	6	9.8	18.3	3.5	-	2.5	5	153 317	QSM-M5-6-I	10
M7	2.3	4	9.8	18.9	5.5	-	3	4	153 319	QSM-M7-4-I	10
	2.9	6	9.8	20.9	5.5	-	4	5	153 321	QSM-M7-6-I	10
R thread											
R1/8	3.1	4	10	16	8	11.5	3	6	153 316	QSM-1/8-4-I	10
	4.1	6	10	18	8	13.5	4	6	153 318	QSM-1/8-6-I	10
G thread with sealing ring											
G1/8	3.1	4	13	16.4	5.1	-	3	8.9	186 266	QSM-G1/8-4-I	10
	4.1	6	13	18.4	5.1	-	4	9.5	186 267	QSM-G1/8-6-I	10

* Packaging unit quantity

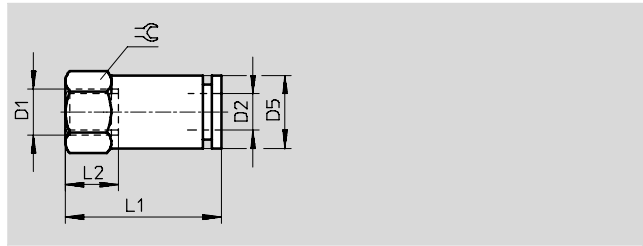
Push-in fittings QSM, Quick Star, mini

Technical data



Push-in fitting QSMF

Female thread
with external hex

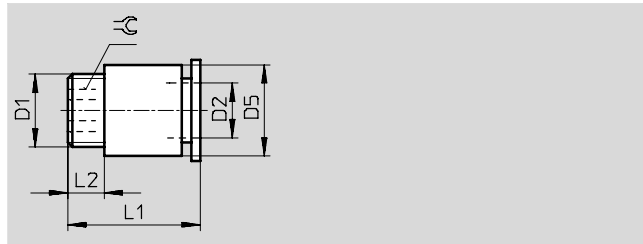


Dimensions and ordering data										
Connection	Nominal size	Tubing O.D.	D5 Ø	L1	L2	⌀	Weight/piece	Part No.	Type	PU*
D1	[mm]	D2					[g]			
Metric thread with sealing ring										
M3	1.3	3	5.5	13.9	4.4	5.5	1.6	153 308	QSMF-M3-3	10
	2.1	4	8	16	4.5	8	4.1	153 310	QSMF-M3-4	10
M5	1.9	3	8	15.5	4.5	8	4.3	153 309	QSMF-M5-3	10
	1.8	4	8	18.2	4.5	8	4.5	153 311	QSMF-M5-4	10

* Packaging unit quantity

Push-in fitting QSMP

Male thread
with internal hex



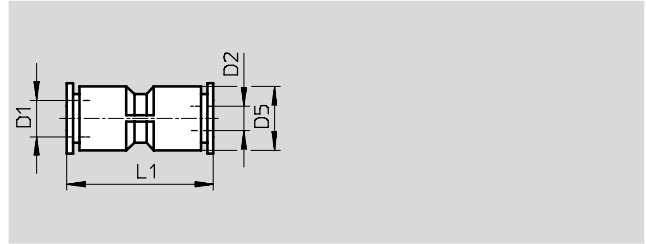
Dimensions and ordering data										
Connection	Nominal size	Tubing O.D.	D5 Ø	L1	L2	⌀	Weight/piece	Part No.	Type	PU*
D1	[mm]	D2					[g]			
Metric thread with sealing ring										
M6x0.75	2.5	4	8	14.5	3.5	2.5	3	153 320	QSMP-M6-4	10
M8x0.75	4	6	10	15	4	4	4	153 322	QSMP-M8-6	10

* Packaging unit quantity

Push-in fittings QSM, Quick Star, mini

Technical data

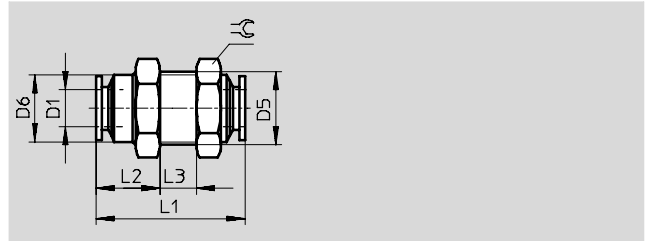
Push-in connector QSM



Dimensions and ordering data								
Tubing O.D.	Nominal size	Tubing O.D.	D5	L1	Weight/piece	Part No.	Type	PU*
D1	[mm]	D2	∅		[g]			
3	1.9	3	6	20	1.5	153 323	QSM-3	10
						130 757	QSM-3-100	100
4	2.6	4	8	23.5	2	153 324	QSM-4	10
						130 758	QSM-4-100	100
6	3.7	6	10.5	25	4	153 325	QSM-6	10
						130 759	QSM-6-100	100
Reducing								
4	1.7	3	8	23.5	3	153 326	QSM-4-3	10
						130 760	QSM-4-3-100	100
6	2.7	4	10.5	25	4	153 327	QSM-6-4	10
						130 761	QSM-6-4-100	100

* Packaging unit quantity

Push-in bulkhead connector QSMS



Dimensions and ordering data											
Tubing O.D.	Nominal size	D5	D6	L1	L2	L3	∅	Weight/piece	Part No.	Type	PU*
D1	[mm]		∅					[g]			
3	1.7	M8x0.75	7	19.5	7	7.5	10	3	153 375	QSMS-3	10
									153 376	QSMS-4	10
4	2.2	M10x1	9	24	9.5	7.5	12	6	130 780	QSMS-4-100	100
									153 377	QSMS-6	10
6	3.7	M12x1	11	25	11	6	14	9	130 781	QSMS-6-100	100

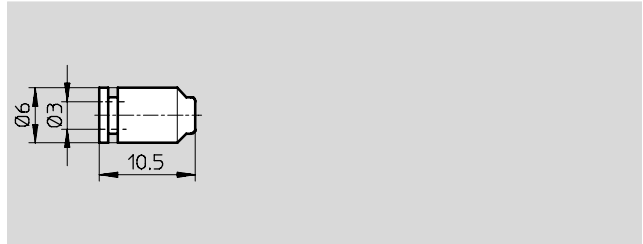
* Packaging unit quantity

Push-in fittings QSM, Quick Star, mini

Technical data



Push-in cap QSMC

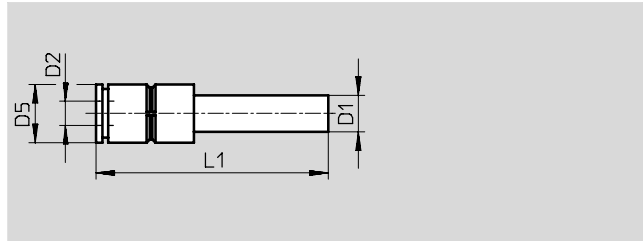


Ordering data

Tubing O.D.	Weight/piece [g]	Part No.	Type	PU*
3	0.5	153 381	QSMC-3	10

* Packaging unit quantity

Push-in connector QSM-...H with push-in sleeve

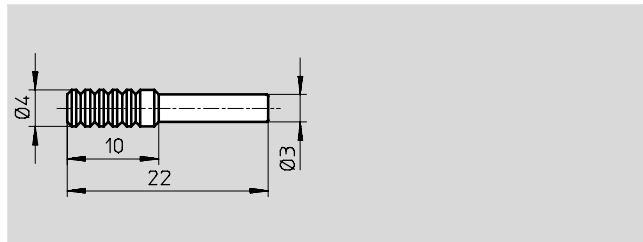


Dimensions and ordering data

Push-in sleeve Ø D1	Nominal size [mm]	Tubing O.D. D2	D5 Ø	L1	Weight/piece [g]	Part No.	Type	PU*
4	2.2	3	8	34	1.5	153 328	QSM-4H-3	10
						130 762	QSM-4H-3-100	100
6	2	4	9.5	39	2.5	153 329	QSM-6H-4	10
						130 763	QSM-6H-4-100	100

* Packaging unit quantity

Blanking plug QSMC-...H



Ordering data

Push-in sleeve Ø	Weight/piece [g]	Part No.	Type	PU*
3	0.5	153 382	QSMC-3H	10

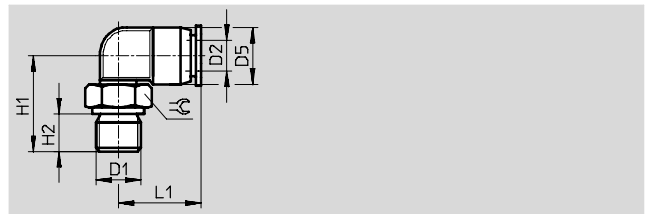
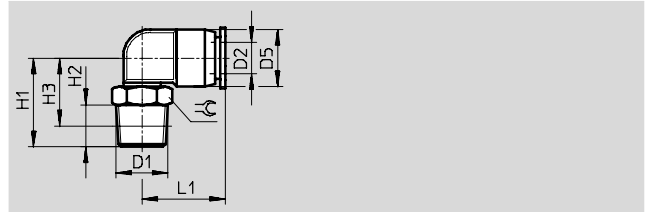
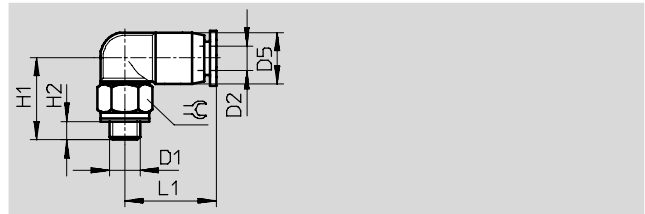
* Packaging unit quantity

Push-in fittings QSM, Quick Star, mini

Technical data

Push-in L-fitting QSML

360° rotatable
Male thread
with external hex



Dimensions and ordering data												
Connection	Nominal size	Tubing O.D.	D5	H1	H2	H3	L1	≈	Weight/ piece	Part No.	Type	PU*
D1	[mm]	D2	∅						[g]			
Metric thread with sealing ring												
M3	0.8	3	6	12.8	3.3	-	11	5.5	1.5	153 330	QSML-M3-3	10
										130 768	QSML-M3-3-100	100
	1.3	4	8	14.8	3.3	-	15.7	8	3.1	153 332	QSML-M3-4	10
										130 769	QSML-M3-4-100	100
M5	1.5	3	6	14	3.5	-	11	8	2.8	153 331	QSML-M5-3	10
										130 770	QSML-M5-3-100	100
	1.7	4	8	14	3.5	-	15.7	8	3.5	153 333	QSML-M5-4	10
										130 771	QSML-M5-4-100	100
	2.1	6	10.5	15	3.5	-	16.3	8	4.1	153 335	QSML-M5-6	10
										130 772	QSML-M5-6-100	100
M7	2	4	8	17	5.5	-	15.7	10	5.6	186 352	QSML-M7-4	10
										130 773	QSML-M7-4-100	100
	2.4	6	10.5	19	5.5	-	16.3	10	6.2	186 353	QSML-M7-6	10
										130 774	QSML-M7-6-100	100
R thread												
R1/8	2.5	4	8.5	16	8	12	16	10	6	153 334	QSML-1/8-4	10
										130 764	QSML-1/8-4-100	100
	3.3	6	11	17	8	13	16.5	10	7	153 336	QSML-1/8-6	10
										130 765	QSML-1/8-6-100	100
G thread with sealing ring												
G1/8	2.5	4	8	16.5	5.1	-	15.7	13	9	186 268	QSML-G1/8-4	10
	3.3	6	10.5	17.5	5.1	-	16.3	13	9.7	186 269	QSML-G1/8-6	10

* Packaging unit quantity

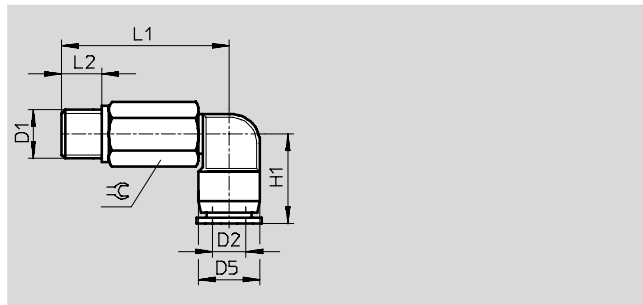
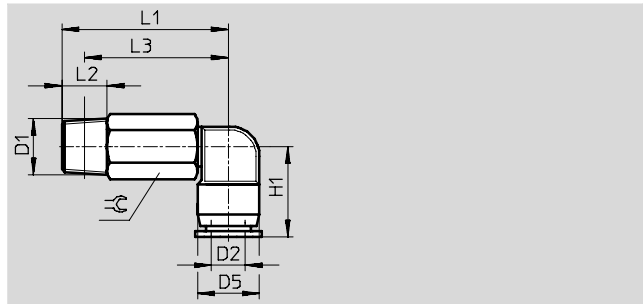
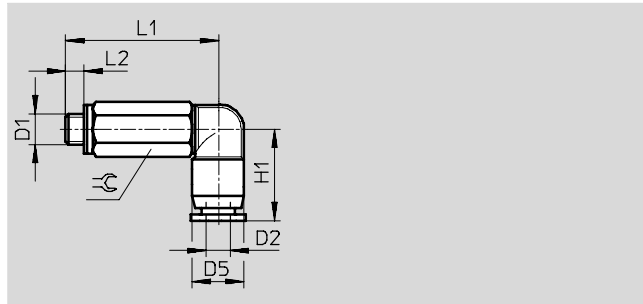
Push-in fittings QSM, Quick Star, mini

FESTO

Technical data

Push-in long L-fitting QSMLL

360° rotatable
Male thread
with external hex



Dimensions and ordering data												
Connection	Nominal size	Tubing O.D.	D5	H1	L1	L2	L3	⊕	Weight/ piece	Part No.	Type	PU*
D1	[mm]	D2	∅						[g]			
Metric thread with sealing ring												
M3	0.9	3	6	11	19.5	3.3	-	5.5	2.8	153 337	QSMLL-M3-3	10
	1.1	4	8	15.7	23.5	3.3	-	8	6.8	153 338	QSMLL-M3-4	10
M5	1.6	3	6	11	25.5	3.5	-	8	7.6	130 838	QSMLL-M5-3	10
	2	4	8	15.7	25.5	3.5	-	8	8.3	153 339	QSMLL-M5-4	10
	2	6	10.5	16.3	26.5	3.5	-	8	9	153 341	QSMLL-M5-6	10
M7	2	4	8	15.7	29.5	5.5	-	10	14	186 354	QSMLL-M7-4	10
	2.4	6	10.5	16.3	31.5	5.5	-	10	14	186 355	QSMLL-M7-6	10
R thread												
R $\frac{1}{8}$	2.3	4	8.5	15.5	28.5	8	22	10	13	153 340	QSMLL-R $\frac{1}{8}$ -4	10
	3.1	6	11	16.5	29.5	8	25.5	10	14	153 342	QSMLL-R $\frac{1}{8}$ -6	10
G thread with sealing ring												
G $\frac{1}{8}$	2.3	4	8	15.7	29	5.1	-	13	23	186 270	QSMLL-G $\frac{1}{8}$ -4	10
	3.1	6	10.5	16.3	30	5.1	-	13	23	186 271	QSMLL-G $\frac{1}{8}$ -6	10

* Packaging unit quantity

Push-in fittings QSM, Quick Star, mini

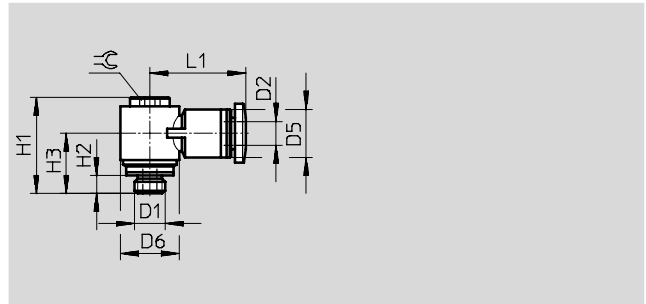
Technical data

Push-in L-fitting QSMLV-...-I

360° rotatable
Male thread
with internal hex



M thread



Dimensions and ordering data													
Connection	Nominal size	Tubing O.D.	D5	D6	H1	H2	H3	L1	≅	Weight/ piece	Part No.	Type	PU*
D1	[mm]	D2	∅	∅						[g]			
Metric thread with sealing ring													
M5	1.7	3	8	9.8	16.5	3.5	10.5	16	3	5.1	130 830	QSMLV-M5-3-I	10
	1.8	4	8	9.8	16.5	3.5	10.5	16	3	5.0	130 831	QSMLV-M5-4-I	10
M7	1.9	4	8	9.8	18.5	5.5	12.5	16	3	5.6	130 832	QSMLV-M7-4-I	10
	1.8	6	10.5	9.8	18.5	5.5	12.5	17.8	3	6.2	130 833	QSMLV-M7-6-I	10

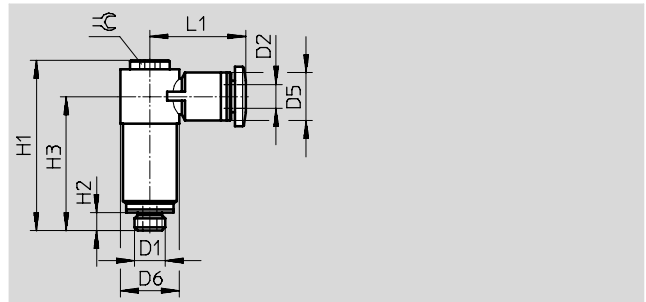
* Packaging unit quantity

Push-in long L-fitting QSMLLV-...-I

360° rotatable
Male thread
with internal hex



M thread



Dimensions and ordering data													
Connection	Nominal size	Tubing O.D.	D5	D6	H1	H2	H3	L1	≅	Weight/ piece	Part No.	Type	PU*
D1	[mm]	D2	∅	∅						[g]			
Metric thread with sealing ring													
M5	1.6	3	8	9.8	28.3	3.5	22.3	16	3	10.9	130 834	QSMLLV-M5-3-I	10
	1.8	4	8	9.8	28.3	3.5	22.3	16	3	10.9	130 835	QSMLLV-M5-4-I	10
M7	1.9	4	8	9.8	30.3	5.5	24.3	16	3	11.8	130 836	QSMLLV-M7-4-I	10
	1.9	6	10.5	9.8	30.3	5.5	24.3	17.8	3	12.4	130 837	QSMLLV-M7-6-I	10

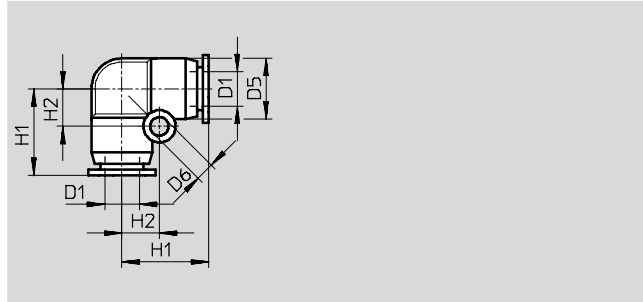
* Packaging unit quantity

Push-in fittings QSM, Quick Star, mini

Technical data

FESTO

Push-in L-connector QSML

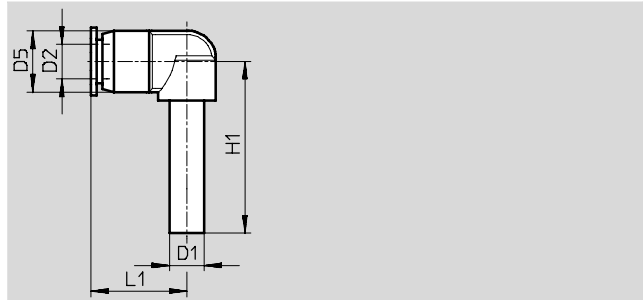


Dimensions and ordering data									
Tubing O.D.	Nominal size	D5	D6	H1	H2	Weight/piece	Part No.	Type	PU*
D1	[mm]	∅	∅			[g]			
3	1.7	6	3.2	11	4.5	1.5	153 343	QSML-3	10
4	2.5	8	3.2	13.5	5.5	2	153 344	QSML-4	10
							130 766	QSML-4-100	100
6	3.4	10.5	3.2	15.5	6.5	4	153 345	QSML-6	10
							130 767	QSML-6-100	100

* Packaging unit quantity

Push-in L-connector QSML-...H

with push-in sleeve



Dimensions and ordering data									
Push-in sleeve ∅	Nominal size	Tubing O.D.	D5	H1	L1	Weight/piece	Part No.	Type	PU*
D1	[mm]	D2	∅			[g]			
3	1.2	3	7	21	13	1	153 346	QSML-3H	10
4	2	4	8	25.5	15	2	153 347	QSML-4H	10
6	2.5	6	10.5	29.5	16.5	3	153 348	QSML-6H	10
Reducing									
4	1.7	3	8.5	25	15	2	153 349	QSML-4H-3	10
6	2.3	4	10.5	29.5	16.5	3	153 350	QSML-6H-4	10

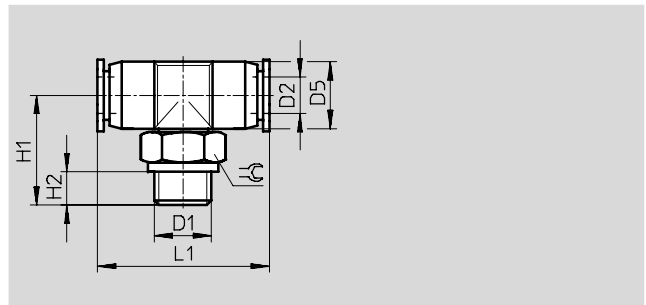
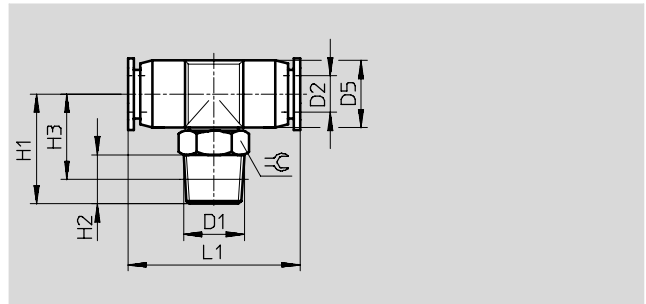
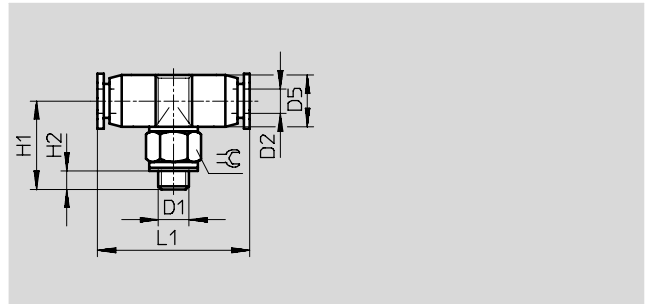
* Packaging unit quantity

Push-in fittings QSM, Quick Star, mini

Technical data

Push-in T-fitting QSMT

360° rotatable
Male thread
with external hex



Dimensions and ordering data													
Connection	Nominal size	Tubing O.D.	D5	H1	H2	H3	L1	≅	Weight/ piece	Part No.	Type	PU*	
D1	[mm]	D2	∅						[g]				
Metric thread with sealing ring													
M3	0.9	3	6	12.8	3.3	-	22	5.5	2	153 351	QSMT-M3-3	10	
	1.3	4	8	15.8	3.3	-	26.2	8	4	153 353	QSMT-M3-4	10	
M5	1.6	3	6	14	3.5	-	22	8	3.3	153 352	QSMT-M5-3	10	
	2.2	4	8	15	3.5	-	26.2	8	4.4	130 784	QSMT-M5-4-100	100	
										153 354	QSMT-M5-4	10	
	2.1	6	10.5	16	3.5	-	28.4	8	5.6	153 356	QSMT-M5-6	10	
										130 785	QSMT-M5-6-100	100	
R thread													
R $\frac{1}{8}$	2.4	4	8.5	17	8	13	27	10	7	153 355	QSMT- $\frac{1}{8}$ -4	10	
	3.3	6	11	18	8	14	30	10	8	153 357	QSMT- $\frac{1}{8}$ -6	10	
G thread with sealing ring													
G $\frac{3}{8}$	2.4	4	8	17.5	5.1	-	26.2	13	10	186 272	QSMT-G $\frac{3}{8}$ -4	10	
	3.3	6	10.5	18.5	5.1	-	28.4	13	12	186 273	QSMT-G $\frac{3}{8}$ -6	10	

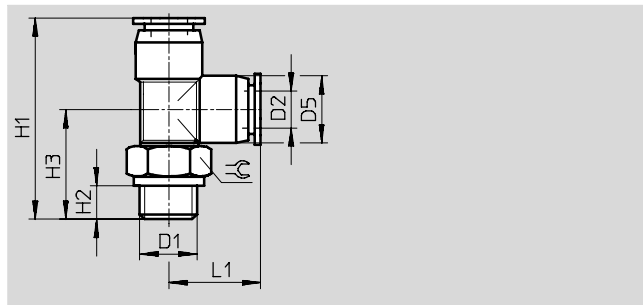
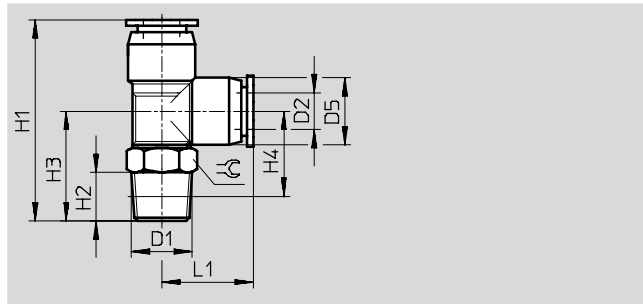
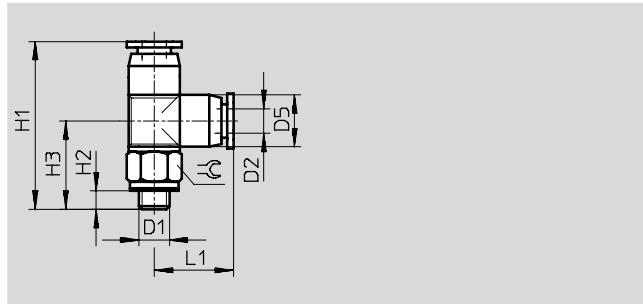
* Packaging unit quantity

Push-in fittings QSM, Quick Star, mini

Technical data

Push-in T-fitting QSMTL

360° rotatable
Male thread
with external hex



Dimensions and ordering data													
Connection	Nominal size	Tubing O.D.	D5	H1	H2	H3	H4	L1	⊕	Weight/ piece [g]	Part No.	Type	PU*
D1	[mm]	D2	∅										
Metric thread with sealing ring													
M3	0.9	3	6	23.8	3.3	12.8	–	11	5.5	2	153 358	QSMTL-M3-3	10
	1.1	4	8	29.5	3.3	15.8	–	13.7	8	4	153 360	QSMTL-M3-4	10
M5	1.7	3	6	25	3.5	14	–	11	8	3.3	153 359	QSMTL-M5-3	10
	1.6	4	8	28.7	3.5	15	–	13.7	8	4.4	153 361	QSMTL-M5-4	10
	1.7	6	10.5	31.3	3.5	16	–	15.3	8	5.7	153 363	QSMTL-M5-6	10
R thread													
R $\frac{1}{8}$	2.4	4	8.5	30	8	17	13	13	10	7	153 362	QSMTL- $\frac{1}{8}$ -4	10
	3.3	6	10.5	33	8	18	14	15	10	8.5	153 364	QSMTL- $\frac{1}{8}$ -6	10
G thread with sealing ring													
G $\frac{1}{8}$	2.4	4	8	31.2	5.1	17.5	–	13.7	13	10	186 274	QSMTL-G $\frac{1}{8}$ -4	10
	3.3	6	10.5	33.8	5.1	18.5	–	15.3	13	12	186 275	QSMTL-G $\frac{1}{8}$ -6	10

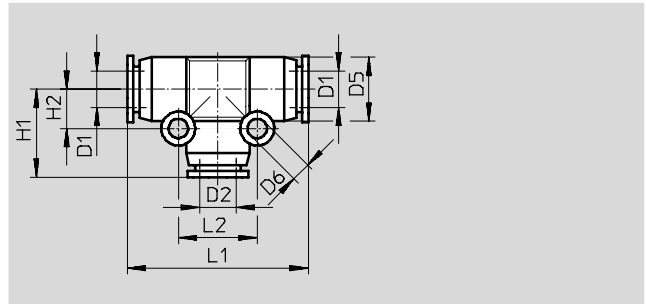
* Packaging unit quantity

Push-in fittings QSM, Quick Star, mini

Technical data



Push-in T-connector QSMT



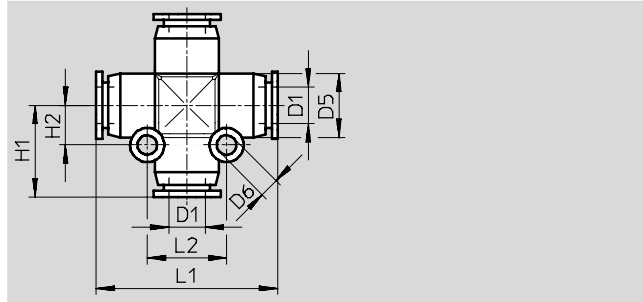
Dimensions and ordering data												
Tubing O.D.	Nominal size	Tubing O.D.	D5	D6	H1	H2	L1	L2	Weight/ piece	Part No.	Type	PU*
D1	[mm]	D2	∅	∅					[g]			
3	1.6	3	6	3.2	11	4.5	22	9	2	153 365	QSMT-3	10
4	2.4	4	8	3.2	13.5	5.5	27	11	2	153 366	QSMT-4	10
										130 782	QSMT-4-100	100
6	3.4	6	10.5	3.2	15.5	6.5	31	13	4	153 367	QSMT-6	10
										130 783	QSMT-6-100	100
Reducing												
4	1.7	3	8	3.2	13	5.5	27	11	3.5	153 368	QSMT-4-3	10
6	2.6	4	10.5	3.2	15	6.5	30	13	4	153 369	QSMT-6-4	10

* Packaging unit quantity

Push-in fittings QSM, Quick Star, mini

Technical data

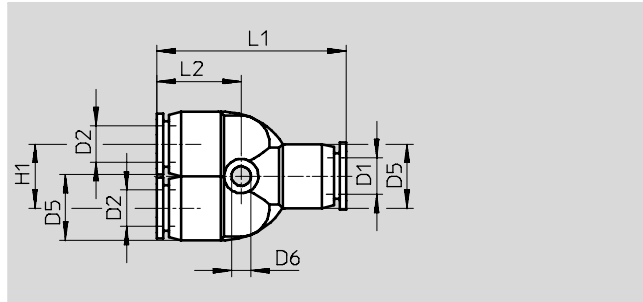
Push-in X-connector QSMX



Dimensions and ordering data											
Tubing O.D.	Nominal size	D5	D6	H1	H2	L1	L2	Weight/ piece	Part No.	Type	PU*
D1	[mm]	∅	∅					[g]			
3	1.7	8	3.2	13.5	5.5	27	11	4	153 378	QSMX-3	10
4	2.5	8	3.2	13.5	5.5	27	11	4	153 379	QSMX-4	10
6	3.3	10.5	3.2	15.5	6.5	31	13	5	153 380	QSMX-6	10

* Packaging unit quantity

Push-in Y-connector QSMY



Dimensions and ordering data											
Tubing O.D.	Nominal size	Tubing O.D.	D5	D6	H1	L1	L2	Weight/ piece	Part No.	Type	PU*
D1	[mm]	D2	∅	∅				[g]			
3	1.6	3	8	3.2	8	28.5	13	3	153 370	QSMY-3	10
4	1.7	4	8	3.2	8	29	13	3	153 371	QSMY-4	10
									130 786	QSMY-4-100	100
6	2.9	6	10.5	3.2	10.5	31.5	14.5	5.5	153 372	QSMY-6	10
									130 787	QSMY-6-100	100
Reducing											
4	1.6	3	8	3.2	8	28.5	13	3	153 373	QSMY-4-3	10
6	2.8	4	10.5	3.2	10.5	31.5	14	5	153 374	QSMY-6-4	10

* Packaging unit quantity