



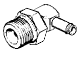




Barbed fittings

Product range overview






FESTO

Design	Version	Type	Connection D1				Connection D2		→ Page/ Internet
			M thread	G thread	Barbed connector	Tubing I.D.	Barbed connector	Tubing I.D.	
Straight design	Barbed fitting with male thread and external hex								
		N	M5	–	–	–	3.6	3	5
							4.8	4	
	Barbed fitting with male thread and external hex								
		CN	M3	–	–	–	2.6; 3.4	2, 3	5
			M5	–			2.95; 3.6; 4.8	2, 3, 4	
			–	G1/8			3.6; 4.8; 7	3, 4, 6	
			–	G1/4			4.8; 7	4, 6	
			–	G3/8			7	6	
	Barbed bulkhead fitting								
		SCN	–	–	2.95	2	–	–	6
					3.6	3			
					4.8	4			
					7	6			
	Barbed tubing connector								
	RTU	–	–	2.95	2	2.95	2	6	
					3.6	3	2.95		2
					3.6	3	3.6		3
					3.6	3	4.8		4
					4.8	4	4.8		4
					4.8	4	7		6
				7	6	7	6		
L-shape	Barbed L-fitting with male thread – rotatable 360°								
		LCN	M3	–	–	–	2.95; 3.6	2, 3	7
			M5	–			2.95; 3.6; 4.8	2, 3, 4	
			–	G1/8			3.6; 4.8; 7	3, 4, 6	
			–	G1/4			4.8; 7	4, 6	
			–	G3/8			7	6	
	Barbed L-fitting with male thread – extended housing section rotatable 360°								
		LCNH	M5	–	–	–	2.95; 3.6; 4.8	2, 3, 4	8
			–	G1/8			3.6; 4.8; 7	3, 4, 6	
			–	G1/4			4.8; 7	4, 6	
	–		G3/8			7	6		
Barbed L-connector									
	L-PK	–	–	2.95	2	–	–	8	
					3.6	3			
					4.8	4			
					7	6			

Barbed fittings


Product range overview

FESTO

Design	Version	Type	Connection D1				Connection D2		→ Page/ Internet		
			M thread	G thread	Barbed connector	Tubing I.D.	Barbed connector	Tubing I.D.			
T-shape	Barbed T-fitting with male thread – rotatable 360°										
		TCN	M3		-	-	2.95; 3.6	2, 3	9		
			M5				2.95; 3.6; 4.8	2, 3, 4			
				G1/8			3.6; 4.8; 7	3, 4, 6			
				G1/4			4.8; 7	4, 6			
				G3/8			7	6			
	Barbed T-connector										
		T-PK	-	-	-	-	2.95	2	-	9	
							3.6	3			
							4.8	4			
				7			6				
V-shape	Barbed V-connector										
		V-PK	-	-	-	-	2.95	2	-	10	
							3.6	3			
							4.8	4			
							7	6			
Y-shape	Barbed Y-connector										
		Y-PK	-	-	-	-	2.95	2	-	10	
							3.6	3			
							4.8	4			
		7	6								
	Barbed T-connector										
		FCN	-	-	-	-	2.95	2	2.95	2	11
							3.6	3	3.6	3	
							3.6	3	2.95	2	
							4.8	4	4.8	4	
							4.8	4	3.6	3	
							7	6	7	6	
		7	6	4.8	4						

Barbed fittings CRCN, stainless steel



Product range overview

Design	Version	Type	Connection D1				Connection D2		→ Page/ Internet
			M thread	G thread	Barbed connector	Tubing I.D.	Barbed connector	Tubing I.D.	
Straight design		CRCN	Barbed fitting with male thread and external hex – stainless steel						12
			M5	–	–	–	2.95; 3.6; 4.8	2, 3, 4	
				G1/8			3.6; 4.8; 7	3, 4, 6	
				G1/4			4.8; 7	4, 6	
				G3/8			7	6	

Barbed hose fittings C-P/N-P, for hose clip

Product range overview

FESTO

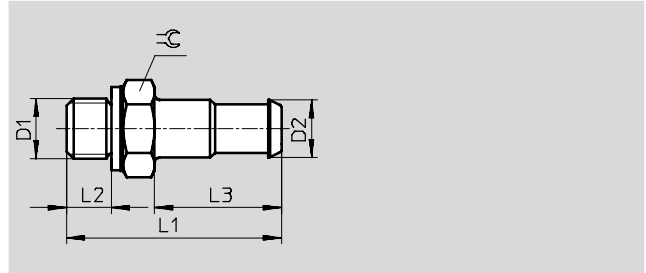
Design	Version	Type	Connection D1				Connection D2		→ Page/ Internet
			M thread	G thread	Barbed connector	Tubing I.D.	Barbed connector	Tubing I.D.	
Barbed hose fitting									
	C-...-P	-	G 1/8	-	-	7	6	13	
			G 1/4			7; 10	6, 9		
			G 3/8			7; 10	6, 9		
			G 1/2			14.8	13		
Barbed hose fitting with sealing ring (aluminium and brass design)									
	N-...-P N-...-MS	-	G 1/8	-	-	7	6	14	
			G 1/4			7; 10	6, 9		
			G 3/8			7; 10; 14.8	6, 9, 13		
			G 1/2			10.3; 14.8	9, 13		
			G 3/4			14.8; 20.8	13, 19		
Hose clip to DIN 3017									
	SK							15	

Barbed fittings N/CN

Technical data

Barbed fitting N-...-PK with sealing ring

Material:
Brass

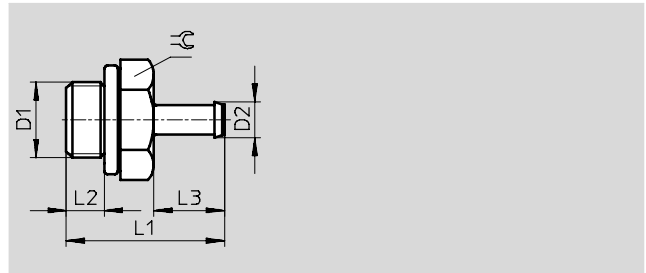


Dimensions and ordering data											
Connection	Nominal size	Barbed connector	For tubing I.D.	L1	L2	L3	⌀	Weight	Part No.	Type	PU*
D1	[mm]	D2						[g]			
M5	2.5	3.6	3	16	3.5	8.5	7	1	4 446	N-M5-PK-3	10
	2.5	4.8	4	18	3.5	10.5	7	2	4 902	N-M5-PK-4	10

* Packaging unit quantity

Barbed fitting CN-...-PK with sealing ring

Material:
M3 thread: High-alloy stainless steel
M5 thread: Steel
G thread: Aluminium



Dimensions and ordering data											
Connection	Nominal size	Barbed connector	For tubing I.D.	L1	L2	L3	⌀	Part No.	Type	PU*	
D1	[mm]	D2									
M thread											
M3	1.5	2.6	2	10	3	5	4.5	15 871	CN-M3-PK-2	10	
	1.5	3.4	3	11	3	6	4.5	15 872	CN-M3-PK-3	10	
M5	1.5	2.95	2	13.8	3.8	6	7	19 521	CN-M5-PK-2	10	
	2.5	3.6	3	17.5	3.8	9.7	7	12 255	CN-M5-PK-3	10	
	2.5	4.8	4	19.5	3.8	11.7	7	12 256	CN-M5-PK-4	10	
G thread											
G $\frac{1}{8}$	2.5	3.6	3	20.2	4.9	9.7	13	11 944	CN- $\frac{1}{8}$ -PK-3	10	
	3.2	4.8	4	22.2	4.9	11.7	13	11 945	CN- $\frac{1}{8}$ -PK-4	10	
	5.3	7	6	24.5	4.9	14	13	11 946	CN- $\frac{1}{8}$ -PK-6	10	
G $\frac{1}{4}$	3.2	4.8	4	24.7	5.8	11.7	17	11 947	CN- $\frac{1}{4}$ -PK-4	10	
	5.3	7	6	27	5.8	14	17	11 948	CN- $\frac{1}{4}$ -PK-6	10	
G $\frac{3}{8}$	5.3	7	6	28	6.8	14	19	11 949	CN- $\frac{3}{8}$ -PK-6	10	

* Packaging unit quantity

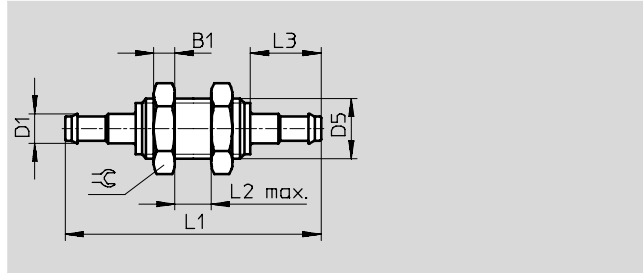
Barbed fittings N/CN

Technical data



Barbed bulkhead fitting SCN-PK

Material:
Aluminium



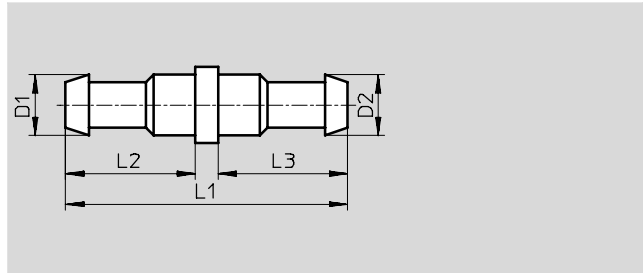
Dimensions and ordering data												
Barbed connector D1	Nominal size [mm]	For tubing I.D.	D5	B1	L1	L2	L3	∅	Weight [g]	Part No.	Type	PU*
2.95	1.5	2	M4	2.2	23.4	6	6	7	1	19 528	SCN-PK-2	10
3.6	1.9	3	M6x0.75	3.2	35.3	8	9.7	10	4	11 972	SCN-PK-3	10
4.8	2.8	4	M10x1	3.5	42.4	10	11.7	13	7	11 973	SCN-PK-4	10
7	4.8	6	M12x1	4	48	10	14	17	10	11 974	SCN-PK-6	10

* Packaging unit quantity

Barbed tubing connector RTU-PK

Material:
Brass

Note on materials:
Conforms to RoHS



Dimensions and ordering data												
Barbed connector		Nominal size [mm]	For tubing I.D.		L1	L2	L3	Weight [g]	Part No.	Type	PU*	
D1	D2		D1	D2								
2.95	2.95	1.5	2	2	14	6	6	1	19 541	RTU-PK-2/2-B	10	
3.6	2.95	1.5	3	2	17.7	9.7	6	1	19 542	RTU-PK-3/2	10	
3.6	3.6	2.5	3	3	19	8.5	8.5	1	4 805	RTU-PK-3/3	10	
3.6	4.8	2.5	3	4	20	8.5	10.5	2	4 499	RTU-PK-3/4	10	
4.8	4.8	3.4	4	4	23	10.5	10.5	2	4 806	RTU-PK-4/4	10	
4.8	7	3.4	4	6	25.5	10.5	13	2	7 604	RTU-PK-4/6	10	
7	7	5.3	6	6	28	13	13	3	7 605	RTU-PK-6/6	10	

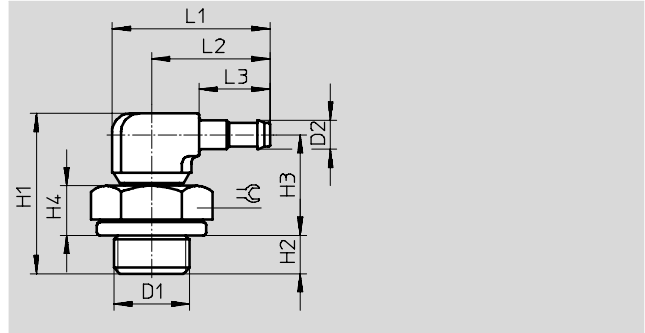
* Packaging unit quantity

Barbed fittings N/CN

Technical data

Barbed L-fitting LCN-...-PK
360° rotatable

Material:
M3 thread: High-alloy steel, die-cast zinc
M5 thread: Steel, die-cast zinc
G thread: Aluminium, die-cast zinc



Dimensions and ordering data																
Connection	Nominal size	Barbed connector	For tubing I.D.	H1	H2	H3	H4	L1	L2	L3	≅	Weight	Part No.	Type	PU*	
D1	[mm]	D2										[g]				
M thread																
M3	1.3	2.95	2	14	2.8	9.2	3.0	12.2	9.6	6	4.5	2	30 491	LCN-M3-PK-2-B	10	
	2.0	3.6	3	15.2	2.8	9.8	3.0	15.9	13.3	9.7	4.5	2	30 982	LCN-M3-PK-3	10	
M5	1.3	2.95	2	16	3.8	10.2	4.0	12.2	9.6	6	7	4	19 523	LCN-M5-PK-2	10	
	2.0	3.6	3	20.1	3.8	13.7	4.0	18.7	14.7	9.7	7	5	12 257	LCN-M5-PK-3	10	
	2.9	4.8	4	21.4	3.8	13.9	4.0	20.7	16.7	11.7	7	6	12 258	LCN-M5-PK-4	10	
G thread																
G ¹ / ₈	2.0	3.6	3	21.2	4.9	13.7	5.6	24	17.5	9.7	13	9	11 955	LCN- ¹ / ₈ -PK-3	10	
	2.9	4.8	4	22.55	4.9	14.15	5.6	26	19.5	11.7	13	10	11 956	LCN- ¹ / ₈ -PK-4	10	
	4.9	7	6	24.45	4.9	15.15	5.6	28.5	22	14.2	13	11	11 957	LCN- ¹ / ₈ -PK-6	10	
G ¹ / ₄	2.9	4.8	4	25.05	5.8	15.75	7.2	26	19.5	11.7	17	13	12 958	LCN- ¹ / ₄ -PK-4	10	
	4.9	7	6	26.95	5.8	16.75	7.2	28.5	22	14.2	17	15	12 959	LCN- ¹ / ₄ -PK-6	10	
G ³ / ₈	4.9	7	6	27.95	6.8	16.75	7.2	28.5	22	14.2	19	20	12 960	LCN- ³ / ₈ -PK-6	10	

* Packaging unit quantity

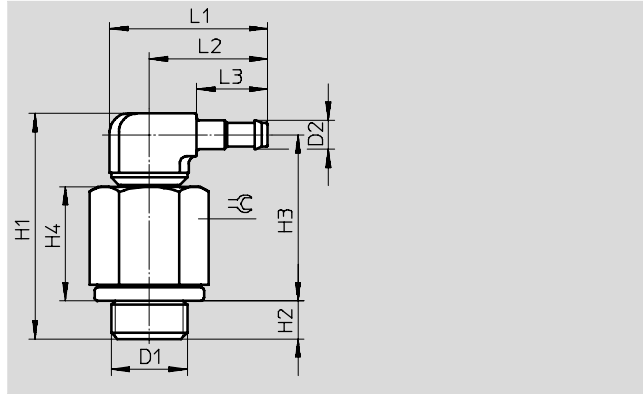
Barbed fittings N/CN

Technical data



Barbed L-fitting LCNH-...-PK 360° rotatable

Material:
M thread: Steel, die-cast zinc
G thread: Aluminium, die-cast zinc

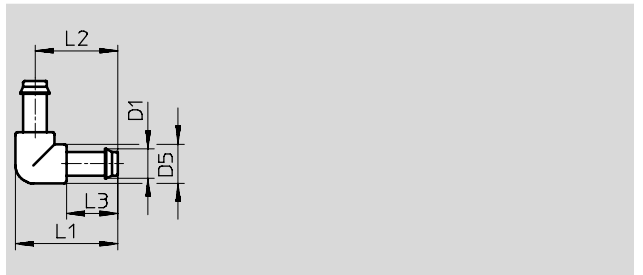


Dimensions and ordering data															
Connection	Nominal size	Barbed connector	For tubing I.D.	H1	H2	H3	H4	L1	L2	L3	⌀C	Weight	Part No.	Type	PU*
D1	[mm]	D2										[g]			
M thread															
M5	1.3	2.95	2	26.9	3.8	21.1	14.9	12.2	9.6	6	7	8	35 982	LCNH-M5-PK-2	10
	2.0	3.6	3	28.7	3.8	22.3	12.6	18.7	14.7	9.7	7	9	35 983	LCNH-M5-PK-3	10
	2.9	4.8	4	30.2	3.8	22.9	12.6	20.7	16.7	11.7	7	10	35 984	LCNH-M5-PK-4	10
G thread															
G $\frac{1}{8}$	2.0	3.6	3	31.8	4.9	24.3	16.2	24.0	17.5	9.7	13	13	35 985	LCNH- $\frac{1}{8}$ -PK-3	10
	2.9	4.8	4	33.15	4.9	24.75	16.2	26	19.5	11.7	13	14	35 986	LCNH- $\frac{1}{8}$ -PK-4	10
	4.9	7	6	35.05	4.9	25.75	16.2	28.5	22	14.2	13	16	35 987	LCNH- $\frac{1}{8}$ -PK-6	10
G $\frac{1}{4}$	2.9	4.8	4	35.65	5.8	26.35	17.8	26	19.5	11.7	17	21	35 988	LCNH- $\frac{1}{4}$ -PK-4	10
	4.9	7	6	37.55	5.8	27.35	17.8	28.5	22	14.2	17	22	35 989	LCNH- $\frac{1}{4}$ -PK-6	10
G $\frac{3}{8}$	4.9	7	6	38.55	6.8	27.35	17.8	28.5	22	14.2	19	29	35 990	LCNH- $\frac{3}{8}$ -PK-6	10

* Packaging unit quantity

Barbed L-connector L-PK

Material:
Brass, polyacetate



Dimensions and ordering data										
Barbed connector	Nominal size	For tubing I.D.	D5	L1	L2	L3	Weight	Part No.	Type	PU*
D1	[mm]						[g]			
2.95	1.5	2	4	12.2	10.2	6	1	19 539	L-PK-2	10
3.6	2.5	3	6.5	18.9	15.6	9.7	1	7 473	L-PK-3	10
4.8	3.4	4	7.8	22.6	18.7	11.7	2	9 584	L-PK-4	10
7	5.3	6	10.4	31.5	26.3	14	7	150 012	L-PK-6	10

* Packaging unit quantity

Barbed fittings N/CN

Technical data

Barbed T-fitting TCN-...-PK

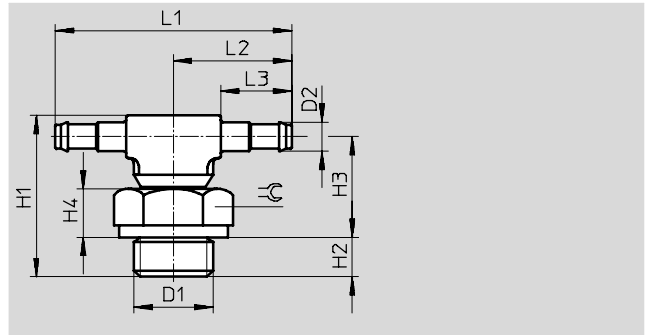
360° rotatable

Material:

M3 thread: High-alloy stainless steel, die-cast zinc

M5 thread: Steel, die-cast zinc

G thread: Aluminium, die-cast zinc



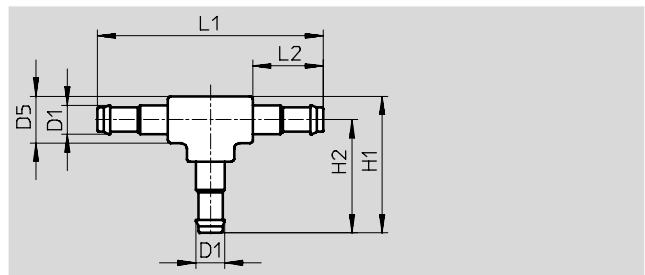
Dimensions and ordering data														
Connection	Nominal size	Barbed connector	For tubing	H1	H2	H3	H4	L1	L2	L3	∅	Part No.	Type	PU*
D1	[mm]	D2	I.D.											
M thread														
M3	1.3	2.95	2	14	2.8	9.2	3.0	19.2	9.6	6	4.5	30 492	TCN-M3-PK-2	10
	2.0	3.6	3	15.2	2.8	9.8	3.0	26.6	13.3	9.7	4.5	30 983	TCN-M3-PK-3	10
M5	1.3	2.95	2	16	3.8	10.2	4.0	19.2	9.6	6	7	19 525	TCN-M5-PK-2	10
	2.0	3.6	3	20.1	3.8	13.7	4.0	29.4	14.7	9.7	7	12 259	TCN-M5-PK-3	10
	2.9	4.8	4	18.1	3.8	14.3	4.0	33.4	16.7	11.7	7	12 432	TCN-M5-PK-4	10
G thread														
G $\frac{1}{8}$	2.0	3.6	3	21.2	4.9	13.7	5.6	35	17.5	9.7	13	11 961	TCN- $\frac{1}{8}$ -PK-3	10
	2.9	4.8	4	22.55	4.9	14.15	5.6	39	19.5	11.7	13	11 962	TCN- $\frac{1}{8}$ -PK-4	10
	4.9	7	6	24.45	4.9	15.15	5.6	44	22	14.2	13	11 963	TCN- $\frac{1}{8}$ -PK-6	10
G $\frac{1}{4}$	2.9	4.8	4	25.05	5.8	15.75	7.2	39	19.5	11.7	17	11 964	TCN- $\frac{1}{4}$ -PK-4	10
	4.9	7	6	26.95	5.8	16.75	7.2	44	22	14.2	17	11 965	TCN- $\frac{1}{4}$ -PK-6	10
G $\frac{3}{8}$	4.9	7	6	27.95	6.8	16.75	7.2	44	22	14.2	19	11 966	TCN- $\frac{3}{8}$ -PK-6	10

* Packaging unit quantity

Barbed T-connector T-PK

Material:

Brass, polyacetate



Dimensions and ordering data											
Barbed connector	Nominal size	For tubing	D5	H1	H2	L1	L2	Weight	Part No.	Type	PU*
D1	[mm]	I.D.						[g]			
2.95	1.5	2	4	12.2	10.2	20.4	6	1	30 919	T-PK-2	10
3.6	2.5	3	6.5	18.9	15.6	31.2	9.7	2	7 267	T-PK-3	10
4.8	3.4	4	7.8	22.6	18.7	37.4	11.7	3	9 585	T-PK-4	10
7	5.3	6	10.4	31.5	26.3	52.6	14	11	150 015	T-PK-6	10

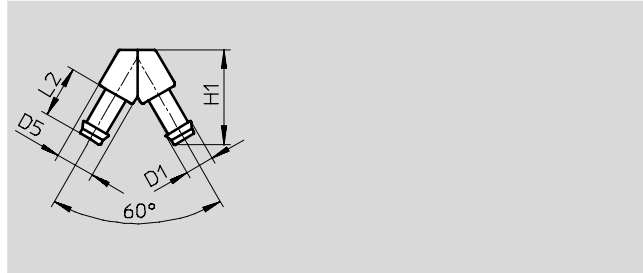
* Packaging unit quantity

Barbed fittings N/CN

Technical data

Barbed V-connector V-PK

Material:
Brass, polyacetate

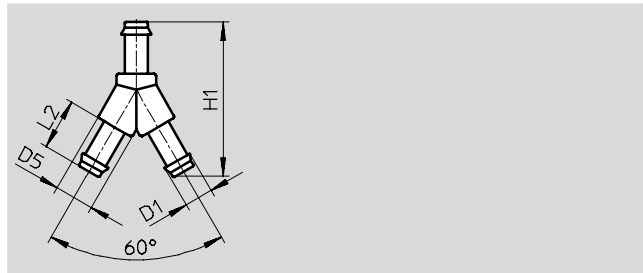


Dimensions and ordering data									
Barbed connector D1	Nominal size [mm]	For tubing I.D.	D5	H1	L2	Weight [g]	Part No.	Type	PU*
2.95	1.5	2	4	11.3	6	1	30 918	V-PK-2 ¹⁾	10
3.6	2.5	3	6.5	17.6	9.7	1	7 268	V-PK-3	10
4.8	3.4	4	7.8	21	11.7	2	30 920	V-PK-4	10
7	5.3	6	10.4	29.8	14	8	150 014	V-PK-6	10

1) Conforms to RoHS
* Packaging unit quantity

Barbed Y-connector Y-PK

Material:
Brass, polyacetate



Dimensions and ordering data									
Barbed connector D1	Nominal size [mm]	For tubing I.D.	D5	H1	L2	Weight [g]	Part No.	Type	PU*
2.95	1.5	2	4	18	6	1	19 540	Y-PK-2 ¹⁾	10
3.6	2.5	3	6.5	28.8	9.7	2	7 269	Y-PK-3	10
4.8	3.4	4	7.8	34.5	11.7	3	9 586	Y-PK-4	10
7	5.3	6	10.4	49.2	14	12	150 013	Y-PK-6	10

1) Conforms to RoHS
* Packaging unit quantity

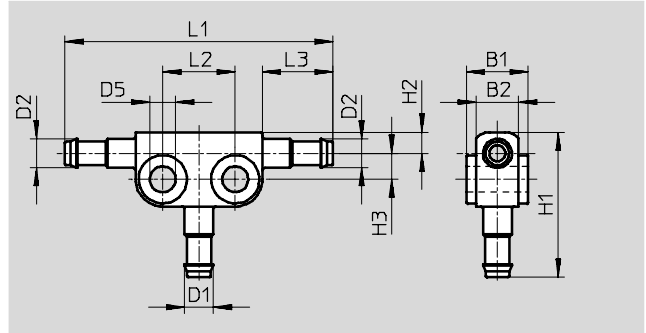
Barbed fittings N/CN

Technical data



Barbed T-connector FCN

Material:
Die-cast zinc



Dimensions and ordering data																	
Connection		Nominal size [mm]	For tubing I.D.		B1	B2	D5	H1	H2	H3	L1	L2	L3	Weight [g]	Part No.	Type	PU*
D1	D2		D1	D2													
2.95	2.95	1.3	2	2	6	4	3.2	15.7	3.1	2.6	28	8	6	5	19 527	FCN-3-PK-2-B	10
3.6	3.6	2	3	3	8.4	5.2	4.3	21.6	3.5	3.9	38.4	10	9.7	8	14 768	FCN-3-PK-3	10
2.95	3.6	2/1.3	2	3	8.4	5.2	4.3	17.9	3.5	3.9	38.4	10	9.7	8	31 314	FCN-3-PK-3/2	10
4.8	4.8	2.9	4	4	10.2	7	4.3	24	3.5	4.3	44.4	12	11.7	12	14 769	FCN-3-PK-4	10
3.6	4.8	2.9/2	3	4	10.2	7	4.3	22	3.5	4.3	44.4	12	11.7	12	31 315	FCN-3-PK-4/3	10
7	7	4.9	6	6	12	8.8	4.3	28.4	4.4	5.3	49.4	12	14.2	16	14 770	FCN-3-PK-6	10
4.8	7	4.9/2.9	4	6	12	8.8	4.3	25.9	4.4	5.3	49.4	12	14.2	16	31 316	FCN-3-PK-6/4	10

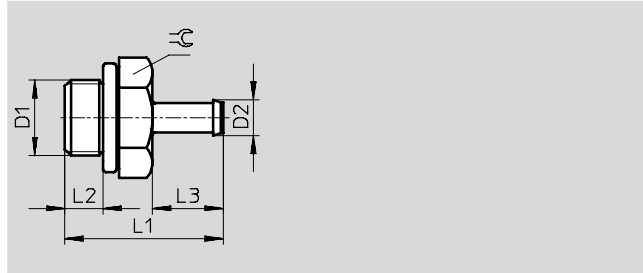
* Packaging unit quantity

Barbed fittings CRCN, stainless steel

Technical data

Barbed fitting CRCN
with sealing ring

Material:
High-alloy stainless steel



Dimensions and ordering data										
Connection	Nominal size	Barbed connector	For tubing I.D.	L1	L2	L3	⌀	Part No.	Type	PU*
D1	[mm]	D2								
M thread										
M5	1.5	2.95	2	13.8	3.8	6	7	30 985	CRCN-M5-PK-2	10
	2.5	3.6	3	17.5	3.8	9.7	7	13 967	CRCN-M5-PK-3	10
	2.5	4.8	4	19.5	3.8	11.7	7	13 968	CRCN-M5-PK-4	10
G thread										
G1/8	2.5	3.6	3	20.2	4.9	9.7	13	13 969	CRCN-1/8-PK-3	10
	3.2	4.8	4	22.2	4.9	11.7	13	13 970	CRCN-1/8-PK-4	10
	5.3	7	6	24.5	4.9	14	13	13 971	CRCN-1/8-PK-6	10
G1/4	3.2	4.8	4	24.7	5.8	11.7	17	13 972	CRCN-1/4-PK-4	1
	5.3	7	6	27	5.8	14	17	13 973	CRCN-1/4-PK-6	1
G3/8	5.3	7	6	28	6.8	14	19	13 974	CRCN-3/8-PK-6	1

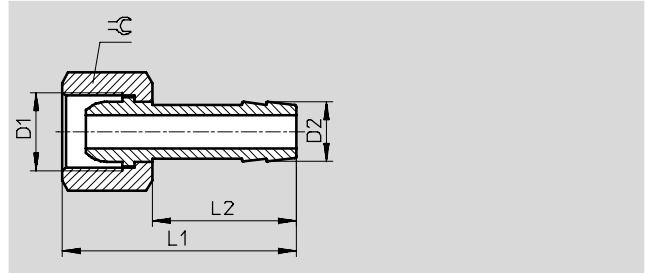
* Packaging unit quantity

Barbed hose fittings C-P/N-P, for hose clip

Technical data

Barbed hose fitting C-...-P

Material:
Brass
Aluminium design



Dimensions and ordering data										
Connection	Nominal size	Connection	For tubing I.D.	L1	L2	\bar{C}	Weight	Part No.	Type	PU*
D1	[mm]	D2					[g]			
G thread										
G $\frac{1}{8}$	4	7	6	36	24	13	18	2 021	C- $\frac{1}{8}$ -P-6	10
G $\frac{1}{4}$	4.5	7	6	39	24	17	28	2 022	C- $\frac{1}{4}$ -P-6	10
	5.5	10	9	39	24	17	34	2 023	C- $\frac{1}{4}$ -P-9	10
G $\frac{3}{8}$	4.5	7	6	39	24	19	31	2 024	C- $\frac{3}{8}$ -P-6	1
	6.5	10	9	39	24	19	34	2 025	C- $\frac{3}{8}$ -P-9	1
G $\frac{1}{2}$	11	14.8	13	50	30	24	64	2 026	C- $\frac{1}{2}$ -P-13	1

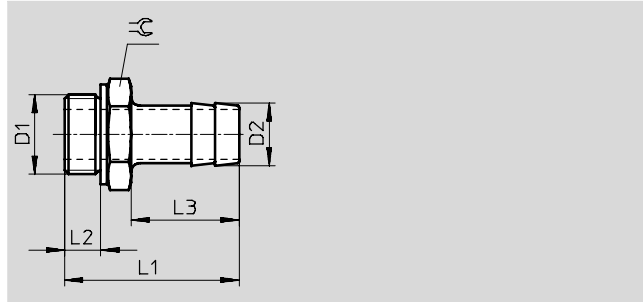
* Packaging unit quantity

Barbed hose fittings C-P/N-P, for hose clip

Technical data

Barbed hose fitting N-...-P
with sealing ring

Material:
N...-P: Blue anodised aluminium
N...-P...MS: Brass



Dimensions and ordering data											
Connection	Nominal size [mm]	Barbed connector D2	For tubing I.D.	L1	L2	L3	⌀	Weight [g]	Part No.	Type	PU*
G thread											
G1/8	4.5	7	6	34.7	4.9	24.2	13	14	3 605	N-1/8-P-6	10
G1/4	4.5	7	6	37.1	5.8	24.1	17	21	3 606	N-1/4-P-6	10
	6.5	10	9	37.1	5.8	24.1	17	24	3 607	N-1/4-P-9	10
G3/8	4.5	7	6	38.1	6.8	24.1	19	34	3 608	N-3/8-P-6	10
	7.6	10	9	38.1	6.8	24.1	19	31	3 609	N-3/8-P-9	10
	11	14.8	13	45.4	6.8	30	19	35	36 160	N-3/8-P-13	1
G1/2	8	10.3	9	39.5	8.15	24	24	61	3 610	N-1/2-P-9	1
	11	14.8	13	45.5	8.15	30	24	63	3 611	N-1/2-P-13	1
G3/4	11	14.8	13	50	9.05	30	32	113	3 612	N-3/4-P-13	1
	16.5	20.8	19	56	9.05	36	32	117	3 613	N-3/4-P-19	1
MS											
G1/8	4.5	7	6	34.7	4.9	24.2	13	10	15 630	N-1/8-P-6-MS	10
G1/4	4.5	7	6	37.1	5.8	24.1	17	15	15 631	N-1/4-P-6-MS	10
	6.5	10	9	37.1	5.8	24.1	17	20	15 632	N-1/4-P-9-MS	10
G3/8	4.5	7	6	38.1	6.8	24.1	19	30	15 633	N-3/8-P-6-MS	10
	7.6	10	9	38.1	6.8	24.1	19	35	15 634	N-3/8-P-9-MS	10
	11	14.8	13	45.4	6.8	30	19	40	36 161	N-3/8-P-13-MS	1
G1/2	8	10.3	9	39.5	8.15	24	24	50	15 635	N-1/2-P-9-MS	1
	11	14.8	13	45.5	8.15	30	24	55	15 636	N-1/2-P-13-MS	1
G3/4	11	14.8	13	50	9.05	30	32	100	15 637	N-3/4-P-13-MS	1
	16.5	20.8	19	56	9.05	36	32	105	15 638	N-3/4-P-19-MS	1

* Packaging unit quantity

Hose clips SK

Technical data

FESTO

Hose clip SK
to DIN 3017

The hose clips are equipped with a worm thread. Band width 9 mm.

Material:
Steel



Dimensions and ordering data				
Clamping range \varnothing [mm]	Weight [g]	Part No.	Type	PU*
10 ... 16	7	9 274	SK-10-16	10
16 ... 27	12	9 275	SK-16-27	10
20 ... 32	13	9 276	SK-20-32	10

* Packaging unit quantity