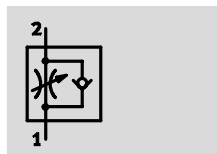


Flow control valves and one-way flow control valves

FESTO

Technical data – Corrosion resistant flow control valve with female thread

Function



One-way flow control for exhaust air

CRGRLA

- Mid flow: Precision adjustment for average speed
- Adjustment with slotted head screw



CRGRLA-...-B

General technical data					
Screw-in thread	M5	G1/8	G1/4	G3/8	G1/2
Valve function	One-way flow control function for exhaust air				
Setting component	Slotted head screw				
Type of mounting	Threaded				
Mounting position	Any				
Max. tightening torque [Nm]	1.5	6	11	20	40

• Note: This product conforms with the ISO 1179-1 standard and the ISO 228-1 standard.

Operating and environmental conditions					
Screw-in thread	M5	G1/8	G1/4	G3/8	G1/2
Operating medium	Compressed air, filtered (to 40µm), lubricated or unlubricated				
Operating pressure [bar]	0.2 ... 10	0.3 ... 10			
Ambient temperature [°C]	-20 ... +80				
Temperature of medium [°C]	-10 ... +60				

Weights [g]					
Screw-in thread	M5	G1/8	G1/4	G3/8	G1/2
	14	44	83	150	315

Standard nominal flow rate q _N [l/min] at 6 bar → 5 bar					
Screw-in thread	M5	G1/8	G1/4	G3/8	G1/2
One-way flow control function for exhaust air					
F ¹⁾	0 ... 95	0 ... 340	0 ... 610	0 ... 1 450	0 ... 2 100
N ²⁾	77 ... 95	260 ... 420	450 ... 820	970 ... 1 600	1 550 ... 2 200

1) F: Flow control direction

2) N: Non-return direction

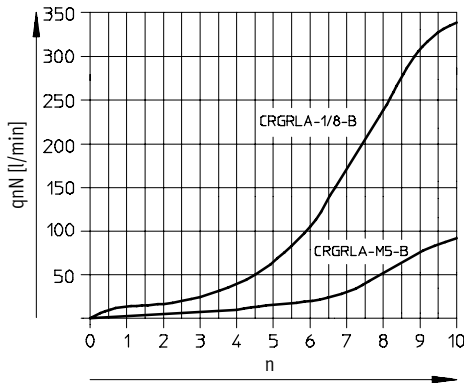
Flow control valves and one-way flow control valves

FESTO

Technical data – Corrosion resistant flow control valve with female thread

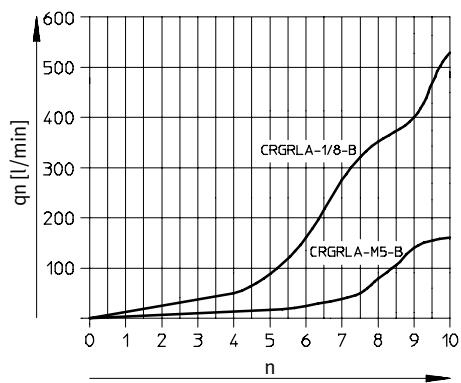
**Standard nominal flow rate q_{nN} at 6 bar \rightarrow 5 bar
as a function of turns of the adjusting screw n**

Screw-in thread M5, $G\frac{1}{8}$

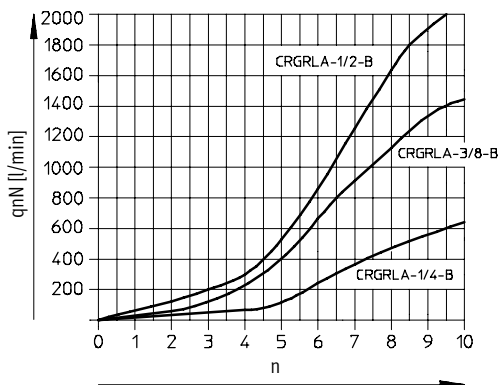


**Standard flow rate q_n at 6 bar \rightarrow 0 bar
as a function of turns of the adjusting screw n**

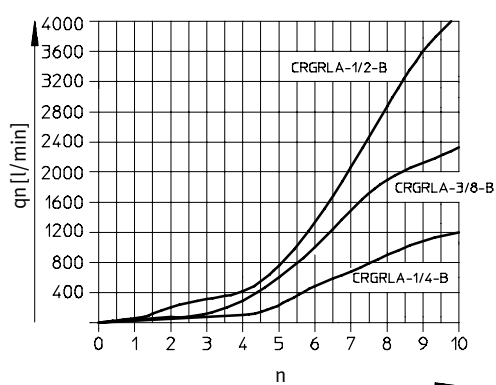
Screw-in thread M5, $G\frac{1}{8}$



Screw-in thread $G\frac{1}{4}$, $G\frac{3}{8}$, $G\frac{1}{2}$



Screw-in thread $G\frac{1}{4}$, $G\frac{3}{8}$, $G\frac{1}{2}$



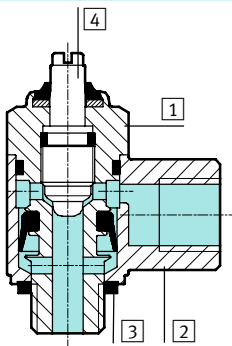
Flow control valves and one-way flow control valves

FESTO

Technical data – Corrosion resistant flow control valve with female thread

Materials

Sectional view

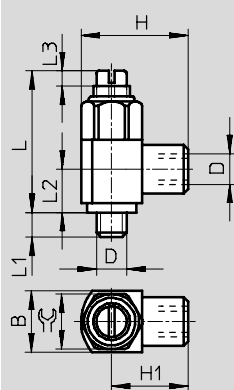


Flow control valve

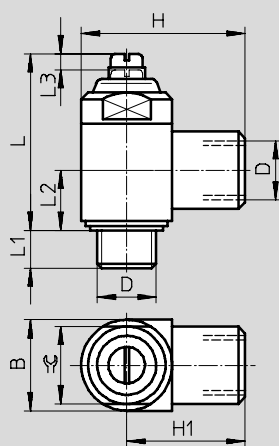
1	Threaded collar	High-alloy stainless steel
2	Swivel joint	High-alloy stainless steel
3	Seals	Fluorocarbon, nitrile rubber
4	Regulating screw	High-alloy stainless steel

Dimensions

Screw-in thread M5



Screw-in thread G $\frac{1}{8}$, G $\frac{1}{4}$, G $\frac{3}{8}$, G $\frac{1}{2}$



Screw-in thread D	Connecting thread D	B	H	H1	L	L1	L2	L3	\varnothing
M5	M5	10 -0.25	17.5 ±0.3	12.5	23.2	4	7.1	2.5	9
G $\frac{1}{8}$	G $\frac{1}{8}$	16 -0.4	28 +0.4/-0.3	20	33.7	5.5	10.3	3.5	14
G $\frac{1}{4}$	G $\frac{1}{4}$	20 -0.3	36 +0.4/-0.2	26	38.8	6.5	13.2	3.5	17
G $\frac{3}{8}$	G $\frac{3}{8}$	25 -0.3	41 +0.4/-0.2	28.5	48.5	7.5	15.4	5	22
G $\frac{1}{2}$	G $\frac{1}{2}$	32 -0.4	53 ±0.5	37	62.2	9	18.9	7.5	27

Note: This product conforms with the ISO 1179-1 standard and the ISO 228-1 standard.

Ordering data

Version	Screw-in thread	Connecting thread	One-way flow control function for exhaust air Part No. Type
	M5	M5	161 403 CRGRLA-M5-B
	G $\frac{1}{8}$	G $\frac{1}{8}$	161 404 CRGRLA-1/8-B
	G $\frac{1}{4}$	G $\frac{1}{4}$	161 405 CRGRLA-1/4-B
	G $\frac{3}{8}$	G $\frac{3}{8}$	161 406 CRGRLA-3/8-B
	G $\frac{1}{2}$	G $\frac{1}{2}$	161 407 CRGRLA-1/2-B