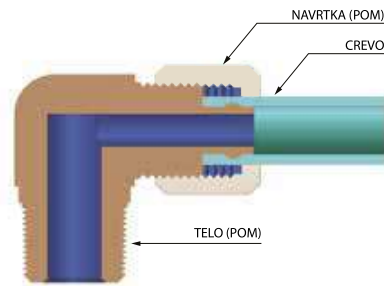


Plastični priključci za vazduh

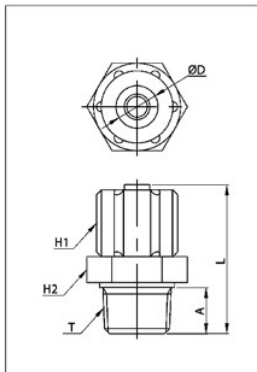
- Plastični priključci sa navrtkom izrađeni od POM-a (Polyoxymethylene)
- Jednostavno spajanje
- Jednostavno rastavljanje
- Visoka sigurnost spoja
- Omogućuju maksimalnu fleksibilnost u izvođenju svih pneumatskih instalacija u industriji
- Pogodni za upotrebu kod različitih tipova pneumatskih creva

Tehničke karakteristike

- Radni medijum: Vazduh
(ne upotrebljavati za druge gasove ili tečnosti)
- Radni pritisak: 0 do 10 bar
- Vakuum max: -0,99 bar
- Radna temperatura: 0 °C do +60 °C

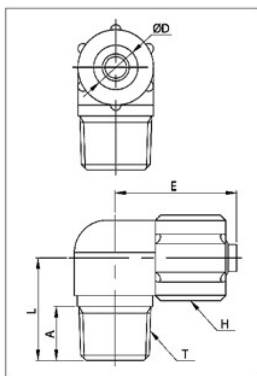


Priključak ravni tip CK-R navoj



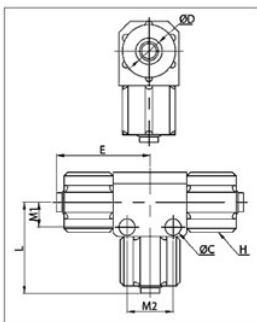
Model	Lager	ØD	T	L	A	H1(Hex)	H2(Hex)
CK-4/2-R1/8		4	R 1/8	24.5	8.0	10	12
CK-6/4-R1/8	✓	6	R 1/8	28.5	7.0	12	13
CK-6/4-R1/4	✓	6	R 1/4	30.5	9.0	12	15
CK-8/6-R1/8	✓	8	R 1/8	30.0	9.0	14	14
CK-8/6-R1/4	✓	8	R 1/4	29.0	9.0	14	17
CK-8/6-R3/8		8	R 3/8	31.7	10.2	14	19
CK-10/8-R1/4		10	R 1/4	33.4	9.2	17	17
CK-10/8-R3/8		10	R 3/8	34.9	10.2	17	19
CK-12/10-R1/4		12	R 1/4	39.0	9.2	19	17
CK-12/10-R3/8		12	R 3/8	41.2	10.2	19	19
CK-12/10-R1/2		12	R 1/2	45.0	15.0	19	22

Priključak ugaoni tip GCK-R navoj



Model	Lager	ØD	T	L	E	A	H(Hex)
GCK-4/2-R1/8		4	R 1/8	21.0	21.0	8.0	12
GCK-6/4-R1/8	✓	6	R 1/8	24.5	27.0	8.5	12
GCK-6/4-R1/4		6	R 1/4	25.3	31.0	9.0	12
GCK-8/6-R1/8	✓	8	R 1/8	24.0	27.0	8.0	14
GCK-8/6-R1/4	✓	8	R 1/4	26.0	30.0	10.0	14
GCK-8/6-R3/8		8	R 3/8	27.5	32.5	10.2	14
GCK-10/8-R1/4		10	R 1/4	30.0	32.0	12.0	17
GCK-10/8-R3/8		10	R 3/8	31.0	37.9	12.0	17
GCK-12/10-R1/4		12	R 1/4	32.0	41.5	11.0	19
GCK-12/10-R3/8		12	R 3/8	34.0	41.5	12.0	19
GCK-12/10-R1/2		12	R 1/2	39.0	45.0	15.0	19

Račva T tip FCK



Model	Lager	ØD	L	E	C	M1	M2	H(Hex)
FCK-4/2		4	22.5	36.0	2.6	5.6	9.0	10
FCK-6/4	✓	6	31.1	48.3	4.3	5.7	11.2	12
FCK-8/6	✓	8	32.0	49.5	4.3	6.6	12.2	14
FCK-10/8		10	40.0	54.0	4.3	8.3	13.4	17
FCK-12/10		12	47.7	68.0	4.3	9.3	13.7	19