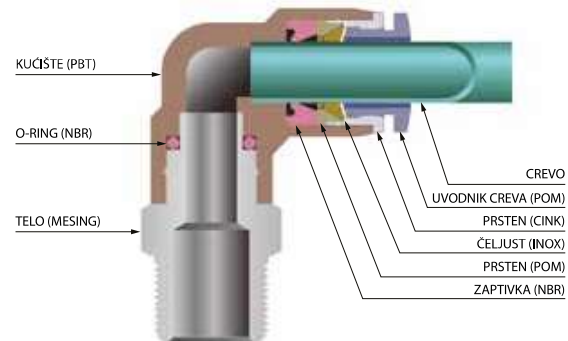


Priključci za vazduh

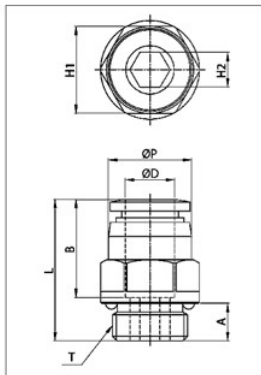
- Izrađeni od visoko kvalitetnih materijala, jednostavni za upotrebu
- Jednostavno spajanje
- Jednostavno rastavljanje
- Visoka sigurnost spoja
- Omogućuju maksimalnu fleksibilnost u izvođenju svih pneumatskih instalacija u industriji
- Pogodni za upotrebu kod različitih tipova pneumatskih creva

Tehničke karakteristike

- Radni medijum: Vazduh (ne upotrebljavati za druge gasove ili tečnosti)
- Radni pritisak: 0 do 10 bar
- Vakuum max: -0,99 bar
- Radna temperatura: 0 °C do +60 °C

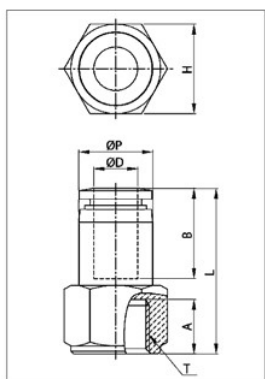


Priključak ravni tip PC-G navoj



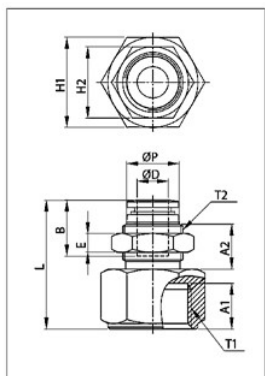
Model	Lager	ØD	ØP	T	L	A	B	H1(Hex)	H2(Hex)
PC-4-G1/8	✓	4	10.3	G 1/8	20.0	5.0	14.8	13	3
PC-4-G1/4	✓	4	10.3	G 1/4	21.5	6.5	14.8	15	3
PC-4-G3/8	✓	4	10.3	G 3/8	21.5	6.5	14.8	17	3
PC-6-G1/8	✓	6	12.3	G 1/8	21.2	5.0	16.4	13	4
PC-6-G1/4	✓	6	12.3	G 1/4	23.2	6.5	16.4	15	5
PC-6-G3/8	✓	6	12.3	G 3/8	22.2	6.5	16.4	17	5
PC-8-G1/8	✓	8	14.3	G 1/8	26.9	5.0	18.4	15	5
PC-8-G1/4	✓	8	14.3	G 1/4	24.4	6.5	18.4	15	6
PC-8-G3/8	✓	8	14.3	G 3/8	23.4	6.5	18.4	17	6
PC-8-G1/2	✓	8	14.3	G 1/2	23.9	8.0	18.4	21	6
PC-10-G1/8	✓	10	16.5	G 1/8	28.9	5.0	19.7	17	5
PC-10-G1/4	✓	10	16.5	G 1/4	28.9	6.5	19.7	17	6
PC-10-G3/8	✓	10	16.5	G 3/8	25.4	6.5	19.7	17	8
PC-10-G1/2	✓	10	16.5	G 1/2	25.9	8.0	19.7	21	8
PC-12-G1/4	✓	12	19.0	G 1/4	31.7	6.5	21.9	19	6
PC-12-G3/8	✓	12	19.0	G 3/8	27.2	6.5	21.9	19	8
PC-12-G1/2	✓	12	19.0	G 1/2	28.2	8.0	21.9	21	8
PC-14-G3/8	✓	14	21.8	G 3/8	33.5	6.5	23.8	22	10
PC-14-G1/2	✓	14	21.8	G 1/2	32.8	8.0	23.8	24	10
PC-16-G3/8	✓	16	24.0	G 3/8	36.5	8.0	24.0	24	10
PC-16-G1/2	✓	16	24.0	G 1/2	36.5	9.0	24.0	24	10

Priključak ravni tip PCF-G navoj



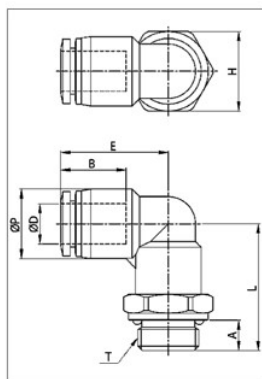
Model	Lager	ØD	ØP	T	L	A	B	H(Hex)
PCF-4-G1/8	✓	4	10.0	G 1/8	27.1	9.0	9.0	14
PCF-4-G1/4	✓	4	10.0	G 1/4	29.1	11.0	11.0	17
PCF-4-G3/8		4	10.0	G 3/8	30.1	12.0	12.0	22
PCF-6-G1/8	✓	6	12.0	G 1/8	28.2	10.0	10.0	14
PCF-6-G1/4	✓	6	12.0	G 1/4	30.2	11.0	11.0	17
PCF-6-G3/8	✓	6	12.0	G 3/8	31.2	12.0	12.0	22
PCF-8-G1/8	✓	8	14.0	G 1/8	29.4	10.0	10.0	14
PCF-8-G1/4	✓	8	14.0	G 1/4	31.4	11.0	11.0	17
PCF-8-G3/8	✓	8	14.0	G 3/8	32.4	12.0	12.0	22
PCF-8-G1/2		8	14.0	G 1/2	34.4	14.0	14.0	24
PCF-10-G1/8		10	16.4	G 1/8	32.6	10.0	10.0	17
PCF-10-G1/4	✓	10	16.4	G 1/4	32.6	11.0	11.0	17
PCF-10-G3/8		10	16.4	G 3/8	33.6	12.0	12.0	22
PCF-10-G1/2		10	16.4	G 1/2	35.6	14.0	14.0	24
PCF-12-G1/4		12	19.0	G 1/4	37.1	11.0	11.0	22
PCF-12-G3/8		12	19.0	G 3/8	37.1	12.0	12.0	22
PCF-12-G1/2		12	19.0	G 1/2	39.1	14.0	14.0	24

Priključak pregradni tip PMF-G navoj



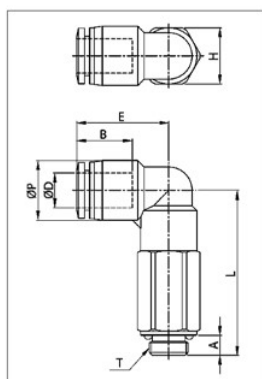
Model	Lager	ØD	ØP	T1	T2	L	E	A1	A2	B	H1(Hex)	H2(Hex)
PMF-4-G1/8		4	10.0	G 1/8	M12x1.0p	27.1	4	9.0	10.6	14.8	14	14
PMF-4-G1/4		4	10.0	G 1/4	M12x1.0p	29.1	4	11.0	10.6	14.8	17	14
PMF-4-G3/8		4	10.0	G 3/8	M12x1.0p	30.1	4	12.0	10.6	14.8	22	14
PMF-6-G1/8	✓	6	12.0	G 1/8	M14x1.0p	30.2	4	9.0	11.0	16.4	17	17
PMF-6-G1/4	✓	6	12.0	G 1/4	M14x1.0p	30.2	4	11.0	11.0	16.4	17	17
PMF-6-G3/8		6	12.0	G 3/8	M14x1.0p	31.2	4	12.0	11.0	16.4	22	17
PMF-8-G1/8	✓	8	14.0	G 1/8	M16x1.0p	31.4	5	9.0	12.0	18.4	19	19
PMF-8-G1/4		8	14.0	G 1/4	M16x1.0p	31.4	5	11.0	12.0	18.4	19	19
PMF-8-G3/8		8	14.0	G 3/8	M16x1.0p	32.4	5	12.0	12.0	18.4	22	19
PMF-10-G1/4	✓	10	16.1	G 1/4	M20x1.0p	33.6	5	11.0	12.7	19.7	24	24
PMF-10-G3/8		10	16.1	G 3/8	M20x1.0p	33.6	5	12.0	12.7	19.7	24	24
PMF-10-G1/2		10	16.1	G 1/2	M20x1.0p	35.6	5	14.0	12.7	19.7	24	24
PMF-12-G1/4		12	19.0	G 1/4	M22x1.0p	38.3	5	11.0	17.1	21.9	24	26
PMF-12-G3/8	✓	12	19.0	G 3/8	M22x1.0p	38.3	5	12.0	17.1	21.9	24	26
PMF-12-G1/2	✓	12	19.0	G 1/2	M22x1.0p	40.3	5	14.0	17.1	21.9	24	26

Priključak ugaoni obrtni tip PL-G navoj



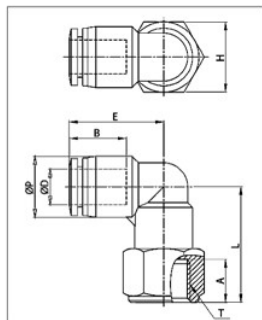
Model	Lager	ØD	ØP	T	L	E	A	B	H(Hex)
PL-4-G1/8	✓	4	10.5	G 1/8	21.5	18.5	5.0	14.8	14
PL-4-G1/4	✓	4	10.5	G 1/4	23.5	18.5	6.5	14.8	17
PL-4-G3/8	✓	4	10.5	G 3/8	23.0	18.5	6.5	14.8	20
PL-6-G1/8	✓	6	12.5	G 1/8	23.5	20.3	5.0	16.4	14
PL-6-G1/4	✓	6	12.5	G 1/4	25.5	20.3	6.5	16.4	17
PL-6-G3/8	✓	6	12.5	G 3/8	25.0	20.3	6.5	16.4	20
PL-8-G1/8	✓	8	14.8	G 1/8	25.0	22.9	5.0	18.3	14
PL-8-G1/4	✓	8	14.8	G 1/4	27.0	22.9	6.5	18.3	17
PL-8-G3/8	✓	8	14.8	G 3/8	26.5	22.9	6.5	18.3	20
PL-8-G1/2	✓	8	14.8	G 1/2	28.0	22.9	8.0	18.3	24
PL-10-G1/8	✓	10	17.5	G 1/8	25.5	24.6	5.0	20.2	17
PL-10-G1/4	✓	10	17.5	G 1/4	27.5	24.6	6.5	20.2	17
PL-10-G3/8	✓	10	17.5	G 3/8	27.0	24.6	6.5	20.2	20
PL-10-G1/2	✓	10	17.5	G 1/2	28.5	24.6	8.0	20.2	24
PL-12-G1/4	✓	12	20.5	G 1/4	30.4	28.7	6.5	22.9	19
PL-12-G3/8	✓	12	20.5	G 3/8	29.9	28.7	6.5	22.9	20
PL-12-G1/2	✓	12	20.5	G 1/2	31.4	28.7	8.0	22.9	24
PL-14-G3/8	✓	14	23.3	G 3/8	34.0	31.4	6.5	23.7	22
PL-14-G1/2	✓	14	23.3	G 1/2	35.5	31.4	8.0	23.7	24
PL-16-G3/8	✓	16	25.5	G 3/8	40.8	32.8	6.5	24.1	24
PL-16-G1/2	✓	16	25.5	G 1/2	41.8	32.8	8.0	24.1	24

Priključak ugaoni obrtni tip PLL-G navoj



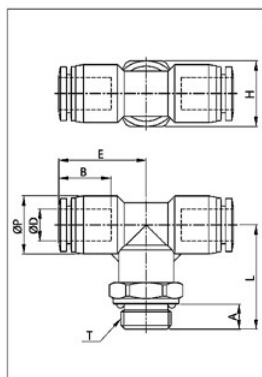
Model	Lager	ØD	ØP	T	L	E	A	B	H(Hex)
PLL-4-G1/8		4	10.5	G 1/8	33.5	18.5	5.0	14.8	14
PLL-4-G1/4		4	10.5	G 1/4	35.5	18.5	6.5	14.8	17
PLL-4-G3/8		4	10.5	G 3/8	37.0	18.5	6.5	14.8	20
PLL-6-G1/8	✓	6	12.5	G 1/8	37.5	20.3	5.0	16.4	14
PLL-6-G1/4	✓	6	12.5	G 1/4	39.5	20.3	6.5	16.4	17
PLL-6-G3/8		6	12.5	G 3/8	39.0	20.3	6.5	16.4	20
PLL-8-G1/8	✓	8	14.8	G 1/8	41.0	22.9	5.0	18.3	14
PLL-8-G1/4	✓	8	14.8	G 1/4	43.0	22.9	6.5	18.3	17
PLL-8-G3/8		8	14.8	G 3/8	42.5	22.9	6.5	18.3	20
PLL-8-G1/2		8	14.8	G 1/2	44.0	22.9	8.0	18.3	24
PLL-10-G1/8		10	17.5	G 1/8	44.5	24.6	5.0	20.2	17
PLL-10-G1/4	✓	10	17.5	G 1/4	46.5	24.6	6.5	20.2	17
PLL-10-G3/8		10	17.5	G 3/8	46.0	24.6	6.5	20.2	20
PLL-10-G1/2	✓	10	17.5	G 1/2	47.5	24.6	8.0	20.2	24
PLL-12-G1/4		12	20.5	G 1/4	52.4	28.7	6.5	22.9	19
PLL-12-G3/8		12	20.5	G 3/8	51.9	28.7	6.5	22.9	20
PLL-12-G1/2		12	20.5	G 1/2	53.4	28.7	8.0	22.9	24
PLL-16-G3/8		16	25.5	G 3/8	65.8	32.8	7.0	24.1	24
PLL-16-G1/2		16	25.5	G 1/2	66.8	32.8	8.0	24.1	24

Priključak ugaoni obrtni tip PLF-G navoj



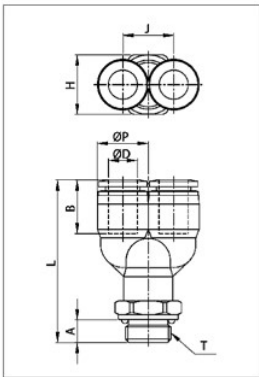
Model	Lager	ØD	ØP	T	L	E	A	B	H(Hex)
PLF-4-G1/8		4	10.5	G 1/8	22.5	18.5	9.0	14.8	14
PLF-4-G1/4		4	10.5	G 1/4	24.5	18.5	11.0	14.8	17
PLF-6-G1/8	✓	6	12.5	G 1/8	24.5	20.3	9.0	16.4	14
PLF-6-G1/4	✓	6	12.5	G 1/4	26.5	20.3	11.0	16.4	17
PLF-6-G3/8		6	12.5	G 3/8	27.5	20.3	12.0	16.4	22
PLF-8-G1/8	✓	8	14.8	G 1/8	26.0	22.9	9.0	18.3	14
PLF-8-G1/4	✓	8	14.8	G 1/4	28.0	22.9	11.0	18.3	17
PLF-8-G3/8		8	14.8	G 3/8	29.0	22.9	12.0	18.3	22
PLF-8-G1/2		8	14.8	G 1/2	31.0	22.9	14.0	18.3	24
PLF-10-G1/8		10	17.5	G 1/8	28.5	24.6	9.0	20.2	17
PLF-10-G1/4		10	17.5	G 1/4	28.5	24.6	11.0	20.2	17
PLF-10-G3/8		10	17.5	G 3/8	29.5	24.6	12.0	20.2	22
PLF-10-G1/2		10	17.5	G 1/2	31.5	24.6	14.0	20.2	24
PLF-12-G1/4		12	20.5	G 1/4	31.4	28.7	11.0	22.9	19
PLF-12-G3/8		12	20.5	G 3/8	32.4	28.7	12.0	22.9	22
PLF-12-G1/2		12	20.5	G 1/2	34.4	28.7	14.0	22.9	24

Račva T tip PT-G navoj



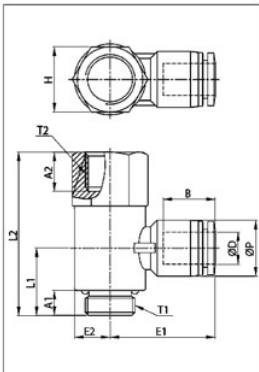
Model	Lager	ØD	ØP	T	L	E	A	B	H(Hex)
PT-4-G1/8	✓	4	10.5	G 1/8	21.5	18.5	5.0	14.8	14
PT-4-G1/4	✓	4	10.5	G 1/4	23.5	18.5	6.5	14.8	17
PT-4-G3/8		4	10.5	G 3/8	23.0	18.5	6.5	14.8	20
PT-6-G1/8	✓	6	12.5	G 1/8	23.5	20.3	5.0	16.4	14
PT-6-G1/4	✓	6	12.5	G 1/4	25.5	20.3	6.5	16.4	17
PT-6-G3/8	✓	6	12.5	G 3/8	25.0	20.3	6.5	16.4	20
PT-8-G1/8	✓	8	15.0	G 1/8	25.0	22.6	5.0	18.3	14
PT-8-G1/4	✓	8	15.0	G 1/4	27.0	22.6	6.5	18.3	17
PT-8-G3/8	✓	8	15.0	G 3/8	26.5	22.6	6.5	18.3	20
PT-8-G1/2	✓	8	15.0	G 1/2	28.0	22.6	8.0	18.3	24
PT-10-G1/8	✓	10	17.5	G 1/8	25.5	25.2	5.0	20.2	17
PT-10-G1/4	✓	10	17.5	G 1/4	27.5	25.2	6.5	20.2	17
PT-10-G3/8	✓	10	17.5	G 3/8	27.0	25.2	6.5	20.2	20
PT-10-G1/2		10	17.5	G 1/2	28.5	25.2	8.0	20.2	24
PT-12-G1/4	✓	12	20.5	G 1/4	30.4	28.7	6.5	22.9	19
PT-12-G3/8	✓	12	20.5	G 3/8	29.9	28.7	6.5	22.9	20
PT-12-G1/2		12	20.5	G 1/2	31.4	28.7	8.0	22.9	24
PT-16-G3/8		16	25.5	G 3/8	40.8	32.8	6.5	24.1	24
PT-16-G1/2		16	25.5	G 1/2	41.8	32.8	8.0	24.1	24

Račva Y tip PWT-G navoj



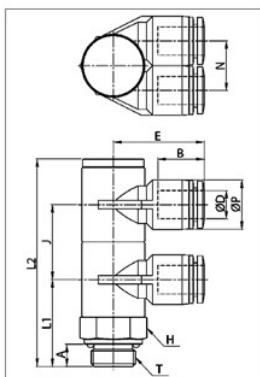
Model	Lager	ØD	ØP	T	L	J	A	B	H(Hex)
PWT-4-G1/8		4	10.5	G 1/8	40.4	10.5	5.0	15.5	14
PWT-4-G1/4		4	10.5	G 1/4	42.4	10.5	6.5	15.5	17
PWT-4-G3/8		4	10.5	G 3/8	41.9	10.5	6.5	15.5	20
PWT-6-G1/8	✓	6	12.5	G 1/8	41.4	12.5	5.0	16.9	14
PWT-6-G1/4	✓	6	12.5	G 1/4	43.4	12.5	6.5	16.9	17
PWT-6-G3/8		6	12.5	G 3/8	42.9	12.5	6.5	16.9	20
PWT-6-G1/2		6	12.5	G 1/2	44.4	12.5	8.0	16.9	24
PWT-8-G1/8		8	14.5	G 1/8	44.4	14.5	5.0	18.6	14
PWT-8-G1/4	✓	8	14.5	G 1/4	46.4	14.5	6.5	18.6	17
PWT-8-G3/8		8	14.5	G 3/8	45.9	14.5	6.5	18.6	20
PWT-8-G1/2		8	14.5	G 1/2	47.4	14.5	8.0	18.6	24
PWT-10-G1/8		10	17.6	G 1/8	48.3	17.6	5.0	20.3	17
PWT-10-G1/4		10	17.6	G 1/4	50.3	17.6	6.5	20.3	17
PWT-10-G3/8		10	17.6	G 3/8	49.8	17.6	6.5	20.3	20
PWT-10-G1/2		10	17.6	G 1/2	51.3	17.6	8.0	20.3	24
PWT-12-G1/4		12	21.0	G 1/4	55.2	21.0	6.5	22.7	19
PWT-12-G3/8		12	21.0	G 3/8	54.7	21.0	6.5	22.7	20
PWT-12-G1/2		12	21.0	G 1/2	56.2	21.0	8.0	22.7	24

Priključak ugaoni obrtni tip PHF-G navoj



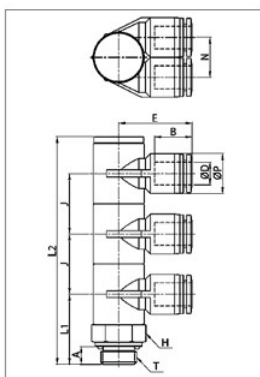
Model	Lager	ØD	ØP	T1	T2	L1	L2	E1	E2	A1	A2	B	H(Hex)
PHF-4-G1/8		4	10.5	G 1/8	G 1/8	14.0	33.9	23.3	7.7	5.0	9.0	14.8	14
PHF-4-G1/4		4	10.5	G 1/4	G 1/4	17.5	42.4	25.1	9.3	6.5	12.0	14.8	17
PHF-4-G3/8		4	10.5	G 3/8	G 3/8	17.5	44.4	27.0	11.2	6.5	13.0	14.8	21
PHF-4-G1/2		4	10.5	G 1/2	G 1/2	20.0	49.9	29.0	13.4	8.0	16.0	14.8	24
PHF-6-G1/8	✓	6	12.5	G 1/8	G 1/8	14.0	33.9	24.1	7.7	5.0	9.0	16.4	14
PHF-6-G1/4	✓	6	12.5	G 1/4	G 1/4	17.5	42.4	26.0	9.3	6.5	12.0	16.4	17
PHF-6-G3/8		6	12.5	G 3/8	G 3/8	17.5	44.4	27.9	11.2	6.5	13.0	16.4	21
PHF-6-G1/2		6	12.5	G 1/2	G 1/2	20.0	49.9	29.3	13.4	8.0	16.0	16.4	24
PHF-8-G1/8	✓	8	14.5	G 1/8	G 1/8	14.0	33.9	25.6	7.7	5.0	9.0	18.3	14
PHF-8-G1/4	✓	8	14.5	G 1/4	G 1/4	17.5	42.4	27.4	9.3	6.5	12.0	18.3	17
PHF-8-G3/8		8	14.5	G 3/8	G 3/8	17.5	44.4	29.3	11.2	6.5	13.0	18.3	21
PHF-8-G1/2		8	14.5	G 1/2	G 1/2	20.0	49.9	30.7	13.4	8.0	16.0	18.3	24
PHF-10-G1/8		10	17.5	G 1/8	G 1/8	14.0	33.9	28.1	7.7	5.0	9.0	20.2	14
PHF-10-G1/4		10	17.5	G 1/4	G 1/4	17.5	42.4	29.8	9.3	6.5	12	20.2	17
PHF-10-G3/8		10	17.5	G 3/8	G 3/8	17.5	44.4	31.9	11.2	6.5	13.0	20.2	21
PHF-10-G1/2		10	17.5	G 1/2	G 1/2	20.0	49.9	33.7	13.4	8.0	16.0	20.2	24
PHF-12-G1/4		12	20.5	G 1/4	G 1/4	17.5	42.4	33.0	9.3	6.5	12.0	22.9	17
PHF-12-G3/8		12	20.5	G 3/8	G 3/8	17.5	44.4	35.1	11.2	6.5	13.0	22.9	21
PHF-12-G1/2		12	20.5	G 1/2	G 1/2	20.0	49.9	37.4	13.4	8.0	16.0	22.9	24

Račva L tip PAT-G (2) navoj



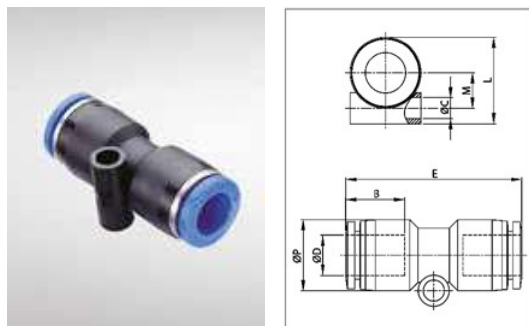
Model	Lager	ØD	ØP	T	L1	L2	N	E	A	B	J	H(Hex)
PAT-4-G1/8(2)		4	10.5	G 1/8	20.5	49.8	10.5	21.4	5.0	14.8	17.9	14
PAT-4-G1/4(2)		4	10.5	G 1/4	25.5	60.8	10.5	22.9	6.5	14.8	21.9	17
PAT-4-G3/8(2)		4	10.5	G 3/8	26.0	61.8	10.5	26.1	6.5	14.8	21.9	21
PAT-4-G1/2(2)		4	10.5	G 1/2	29.6	68.9	10.5	27.7	8.0	14.8	23.9	24
PAT-6-G1/8(2)	✓	6	12.5	G 1/8	20.5	49.8	12.5	22.9	5.0	16.4	17.9	14
PAT-6-G1/4(2)		6	12.5	G 1/4	25.5	60.8	12.5	24.8	6.5	16.4	21.9	17
PAT-6-G3/8(2)		6	12.5	G 3/8	26.0	61.8	12.5	26.6	6.5	16.4	21.9	21
PAT-6-G1/2(2)		6	12.5	G 1/2	29.6	68.9	12.5	28.6	8.0	16.4	23.9	24
PAT-8-G1/8(2)		8	14.5	G 1/8	20.5	49.8	14.5	24.8	5.0	18.3	17.9	14
PAT-8-G1/4(2)		8	14.5	G 1/4	25.5	60.8	14.5	26.6	6.5	18.3	21.9	17
PAT-8-G3/8(2)		8	14.5	G 3/8	26.0	61.8	14.5	28.2	6.5	18.3	21.9	21
PAT-8-G1/2(2)		8	14.5	G 1/2	29.6	68.9	14.5	30.3	8.0	18.3	23.9	24
PAT-10-G1/8(2)		10	17.5	G 1/8	20.5	49.8	17.5	26.7	5.0	20.2	17.9	14
PAT-10-G1/4(2)		10	17.5	G 1/4	25.5	60.8	17.5	28.2	6.5	20.2	21.9	17
PAT-10-G3/8(2)		10	17.5	G 3/8	26.0	61.8	17.5	30.2	6.5	20.2	21.9	21
PAT-10-G1/2(2)		10	17.5	G 1/2	29.6	68.9	17.5	32.6	8.0	20.2	23.9	24
PAT-12-G1/4(2)		12	20.5	G 1/4	25.5	60.8	20.5	31.1	6.5	22.9	21.9	17
PAT-12-G3/8(2)		12	20.5	G 3/8	26.0	61.8	20.5	32.9	6.5	22.9	21.9	21
PAT-12-G1/2(2)		12	20.5	G 1/2	29.6	68.9	20.5	35.2	8.0	22.9	23.9	24

Račva L tip PAT-G (3) navoj



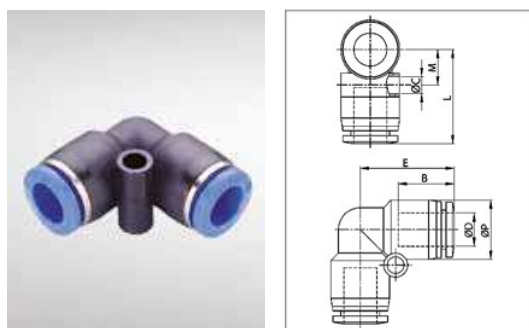
Model	Lager	ØD	ØP	T	L1	L2	N	E	A	B	J	H(Hex)
PAT-4-G1/8(3)		4	10.5	G 1/8	20.5	67.7	10.5	21.4	5.0	14.8	17.9	14
PAT-4-G1/4(3)		4	10.5	G 1/4	25.5	82.7	10.5	22.9	6.5	14.8	21.9	17
PAT-4-G3/8(3)		4	10.5	G 3/8	26.0	83.7	10.5	26.1	6.5	14.8	21.9	21
PAT-4-G1/2(3)		4	10.5	G 1/2	29.6	92.8	10.5	27.7	8.0	14.8	23.9	24
PAT-6-G1/8(3)	✓	6	12.5	G 1/8	20.5	67.7	12.5	22.9	5.0	16.4	17.9	14
PAT-6-G1/4(3)		6	12.5	G 1/4	25.5	82.7	12.5	24.8	6.5	16.4	21.9	17
PAT-6-G3/8(3)		6	12.5	G 3/8	26.0	83.7	12.5	26.6	6.5	16.4	21.9	21
PAT-6-G1/2(3)		6	12.5	G 1/2	29.6	92.8	12.5	28.6	8.0	16.4	23.9	24
PAT-8-G1/8(3)		8	14.5	G 1/8	20.5	67.7	14.5	24.8	5.0	18.3	17.9	14
PAT-8-G1/4(3)		8	14.5	G 1/4	25.5	82.7	14.5	26.6	6.5	18.3	21.9	17
PAT-8-G3/8(3)		8	14.5	G 3/8	26.0	83.7	14.5	28.2	6.5	18.3	21.9	21
PAT-8-G1/2(3)		8	14.5	G 1/2	29.6	92.8	14.5	30.3	8.0	18.3	23.9	24
PAT-10-G1/8(3)		10	17.5	G 1/8	20.5	67.7	17.5	26.7	5.0	20.2	17.9	14
PAT-10-G1/4(3)		10	17.5	G 1/4	25.5	82.7	17.5	28.2	6.5	20.2	21.9	17
PAT-10-G3/8(3)		10	17.5	G 3/8	26.0	83.7	17.5	30.2	6.5	20.2	21.9	21
PAT-10-G1/2(3)		10	17.5	G 1/2	29.6	92.8	17.5	32.6	8.0	20.2	23.9	24
PAT-12-G1/4(3)		12	20.5	G 1/4	25.5	82.7	20.5	31.1	6.5	22.9	21.9	17
PAT-12-G3/8(3)		12	20.5	G 3/8	26.0	83.7	20.5	32.9	6.5	22.9	21.9	21
PAT-12-G1/2(3)		12	20.5	G 1/2	29.6	92.8	20.5	35.2	8.0	22.9	23.9	24

Priključak spojni tip PUC



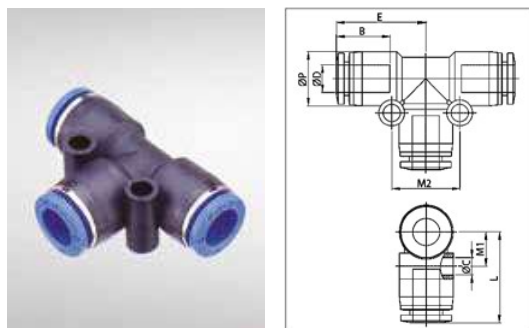
Model	Lager	ØD	ØP	L	E	ØC	B	M
PUC-4	✓	4	10.5	12.8	33.9	3.3	14.8	4.5
PUC-6	✓	6	12.5	15.3	36.4	3.3	16.4	6.0
PUC-8	✓	8	14.8	18.4	39.2	4.5	18.3	7.5
PUC-10	✓	10	17.5	20.1	43.5	4.3	19.7	7.8
PUC-12	✓	12	20.5	23.7	48.3	4.3	22.9	9.9
PUC-14	✓	14	23.0	-	50.0	-	23.7	-
PUC-16	✓	16	25.5	-	51.6	-	24.1	-

Priključak L spojni tip PUL



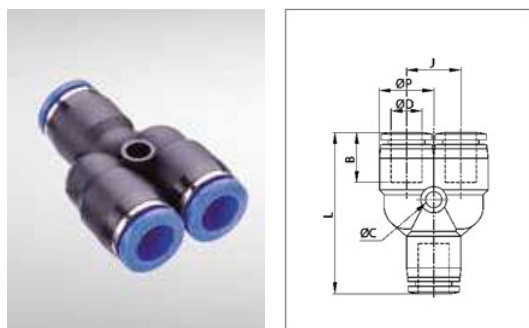
Model	Lager	ØD	ØP	L	E	ØC	B	M
PUL-4	✓	4	10.6	18.7	18.7	3.3	14.8	6.9
PUL-6	✓	6	12.5	21.3	21.3	4.2	16.4	8.4
PUL-8	✓	8	14.8	23.6	23.6	4.2	18.3	8.9
PUL-10	✓	10	17.5	25.4	25.4	4.3	20.2	10.9
PUL-12	✓	12	20.5	29.9	29.9	4.3	22.9	12.4
PUL-14	✓	14	23.0	31.9	31.9	4.3	23.7	13.7
PUL-16	✓	16	25.5	34.3	34.3	5.3	24.1	15.9

Račva T tip PUT



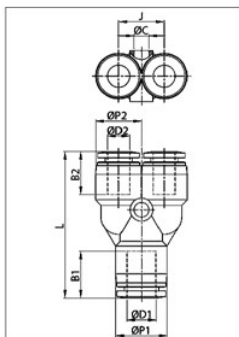
Model	Lager	ØD	ØP	L	E	ØC	B	M1	M2
PUT-4	✓	4	10.5	18.7	18.0	3.3	14.8	6.8	12.8
PUT-6	✓	6	12.5	21.0	20.8	3.3	16.4	7.9	15.8
PUT-8	✓	8	14.8	23.6	22.6	4.5	18.3	9.7	19.3
PUT-10	✓	10	17.5	25.5	24.3	4.3	19.7	10.9	21.8
PUT-12	✓	12	20.5	29.9	28.7	4.3	22.9	12.4	24.6
PUT-14	✓	14	23.0	31.9	31.9	4.3	23.7	13.7	27.3
PUT-16	✓	16	25.5	34.3	34.3	5.3	24.1	15.9	31.8

Račva Y tip PY



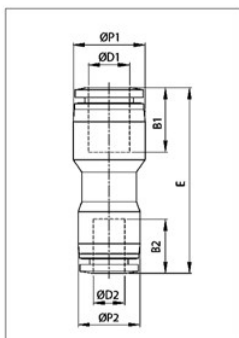
Model	Lager	ØD	ØP	L	J	ØC	B
PY-4	✓	4	10.5	35.9	10.5	3.3	16.0
PY-6	✓	6	13.0	39.2	13.0	3.3	17.6
PY-8	✓	8	14.6	43.2	14.6	4.3	18.6
PY-10	✓	10	17.5	47.2	17.5	4.5	19.9
PY-12	✓	12	21.0	54.1	21.0	4.5	22.8
PY-16	✓	16	25.5	61.9	25.5	5.3	24.1

Račva Y tip PW



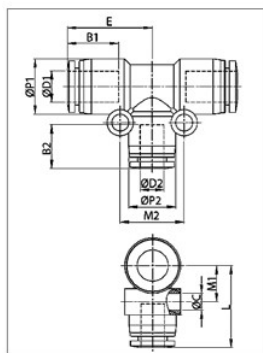
Model	Lager	ØD1	ØD2	ØP1	ØP2	L	J	ØC	B1	B2
PW-6-4	✓	6	4	13.0	10.5	37.6	10.5	3.3	17.6	16.0
PW-8-4		8	4	14.8	10.5	39.1	10.5	3.3	18.6	16.0
PW-8-6	✓	8	6	14.6	13.0	41.7	13.0	3.3	18.6	17.6
PW-10-6	✓	10	6	17.5	13.0	43.0	13.0	3.3	19.8	17.4
PW-10-8	✓	10	8	17.5	14.6	44.5	14.6	4.3	19.8	18.6
PW-12-8	✓	12	8	21.0	14.8	47.4	14.8	3.3	22.2	18.6
PW-12-10	✓	12	10	21.0	17.5	50.7	17.5	4.5	22.8	19.9
PW-16-12	✓	16	12	25.5	21.0	57.0	21.0	5.3	24.1	22.8

Priključak spojni tip PG



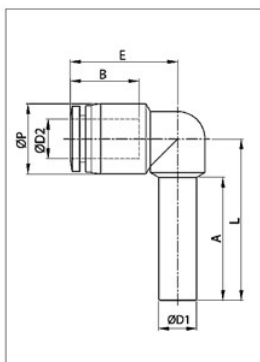
Model	Lager	ØD1	ØD2	ØP1	ØP2	E	B1	B2
PG-6-4	✓	6	4	12.5	10.5	35.0	16.4	14.8
PG-8-4	✓	8	4	14.8	10.5	38.1	18.3	14.8
PG-8-6	✓	8	6	14.5	12.5	37.6	18.3	16.4
PG-10-6	✓	10	6	17.5	12.5	39.9	20.2	16.4
PG-10-8	✓	10	8	17.5	14.5	40.0	20.2	18.3
PG-12-8	✓	12	8	20.5	14.8	45.5	22.9	18.3
PG-12-10	✓	12	10	20.5	17.5	43.9	22.9	20.2
PG-14-12	✓	14	12	23.0	20.5	49.4	23.7	22.9
PG-16-12	✓	16	12	25.5	20.5	49.9	24.1	22.9

Račva T tip PGT



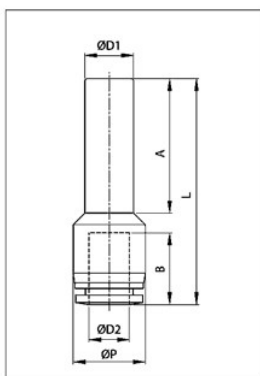
Model	Lager	ØD1	ØD2	ØP1	ØP2	L	E	ØC	B1	B2	M1	M2
PGT-6-4	✓	6	4	12.5	10.4	19.0	20.8	3.3	16.4	14.8	7.9	13.8
PGT-8-4	✓	8	4	14.8	10.5	20.0	21.6	4.5	18.3	14.8	9.7	15.0
PGT-8-6	✓	8	6	14.8	12.5	21.9	22.6	4.5	18.3	16.4	9.7	17.0
PGT-10-6	✓	10	6	17.5	12.5	23.1	24.8	4.3	20.2	16.4	10.9	16.8
PGT-10-8	✓	10	8	17.5	14.5	24.8	24.8	4.3	20.2	18.3	10.9	18.8
PGT-12-8	✓	12	8	20.5	14.5	25.8	28.1	4.3	22.9	18.3	12.4	18.8
PGT-12-10	✓	12	10	20.5	17.5	27.4	28.1	4.3	22.9	20.2	12.4	21.9
PGT-16-10	✓	16	10	25.5	17.5	30.1	30.8	5.3	24.1	19.7	15.9	22.8
PGT-16-12	✓	16	12	25.5	20.5	32.6	32.3	5.3	24.1	22.9	15.9	25.8
PGT-4-6	✓	4	6	10.5	12.5	20.3	18.8	4.3	14.8	16.4	7.4	16.8
PGT-6-8	✓	6	8	12.5	14.8	22.7	20.3	4.3	16.4	18.1	8.4	19.1
PGT-8-10	✓	8	10	14.5	17.5	25.4	22.8	4.3	18.4	20.3	9.4	21.4
PGT-10-12		10	12	17.5	20.5	29.2	25.3	4.3	20.3	23.1	10.9	24.8

Priključak L spojni tip PLJ



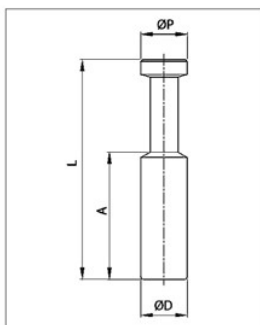
Model	Lager	ØD1	ØD2	ØP	L	E	A	B
PLJ-4	✓	4	4	10.5	28.4	18.5	22.0	14.8
PLJ-6	✓	6	6	12.5	31.4	20.3	24.0	16.4
PLJ-8	✓	8	8	14.8	34.1	22.6	26.0	18.3
PLJ-10	✓	10	10	17.5	37.9	24.3	28.0	20.2
PLJ-12	✓	12	12	20.5	41.5	28.1	30.0	22.9
PLJ-16		16	16	25.5	59.8	32.8	32.0	24.1
PLJ-6-4		6	4	10.5	38.5	18.5	25.0	14.8
PLJ-8-6	✓	8	6	12.5	41.5	20.3	26.0	16.4
PLJ-10-8	✓	10	8	14.8	45.0	22.9	28.0	18.3
PLJ-12-10	✓	12	10	17.5	48.0	24.6	30.0	20.2

Priključak dvostrani tip PGJ



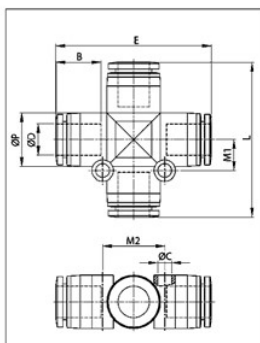
Model	Lager	ØD1	ØD2	ØP	L	A	B
PGJ-4-6		4	6	12.5	40.0	21.0	16.4
PGJ-6-4	✓	6	4	10.5	37.7	21.8	14.8
PGJ-6-8		6	8	14.8	43.5	22.5	18.4
PGJ-8-4	✓	8	4	10.5	39.7	24.8	14.8
PGJ-8-6	✓	8	6	12.5	40.0	23.8	16.4
PGJ-10-6	✓	10	6	12.5	44.0	28.8	16.4
PGJ-10-8	✓	10	8	14.8	46.4	27.6	18.3
PGJ-12-6	✓	12	6	12.5	50.0	30.5	16.4
PGJ-12-8	✓	12	8	14.8	50.4	32.6	18.3
PGJ-12-10	✓	12	10	17.5	52.9	31.2	20.2
PGJ-16-12		16	12	20.5	63.3	37.7	23.1

Čep tip PP



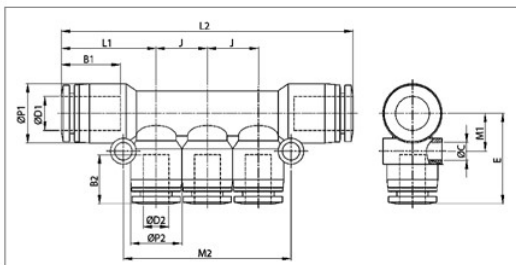
Model	Lager	ØD	ØP	L	A
PP-4	✓	4	4	30.0	18.0
PP-6	✓	6	6	34.0	20.0
PP-8	✓	8	8	38.0	22.0
PP-10	✓	10	10	42.0	25.0
PP-12	✓	12	12	46.0	28.0
PP-16	✓	16	16	50.0	30.0

Račva X tip PZA



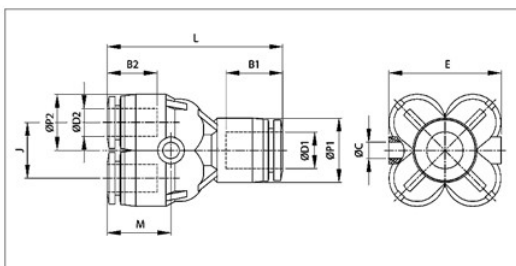
Model	Lager	ØD	ØP	L	E	ØC	B	M1	M2
PZA-4	✓	4	10.5	37.2	35.5	3.3	14.8	6.4	12.8
PZA-6	✓	6	12.5	42.1	41.4	3.3	16.4	7.5	15.0
PZA-8	✓	8	15.0	46.6	44.7	4.2	18.3	9.1	18.2
PZA-10	✓	10	17.5	50.8	48.5	4.3	19.7	10.2	20.3
PZA-12	✓	12	20.5	57.7	55.3	4.3	22.4	11.9	23.7

Račva T tip PKG



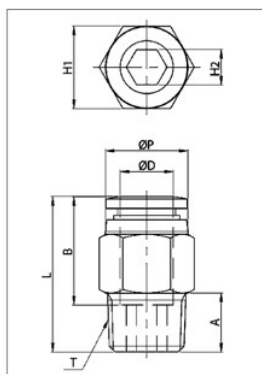
Model	Lager	ØD1	ØD2	ØP1	ØP2	L1	L2	E	ØC	B1	B2	J	M1	M2
PKG-6-4		6	4	12.5	10.5	21.1	63.1	19.5	3.3	16.4	14.8	10.5	7.6	34.0
PKG-8-4		8	4	14.5	10.5	22.3	65.5	20.7	4.3	18.3	14.8	10.5	9.2	34.8
PKG-8-6	✓	8	6	14.5	12.5	23.3	71.5	22.2	4.3	18.3	16.4	12.5	9.3	41.1
PKG-10-6	✓	10	6	17.5	12.5	26.7	78.4	22.8	4.3	20.2	16.4	12.5	9.5	41.7
PKG-10-8	✓	10	8	17.5	14.5	27.4	83.7	25.7	4.3	20.2	18.3	14.5	9.5	47.0

Račva Y tip PXG



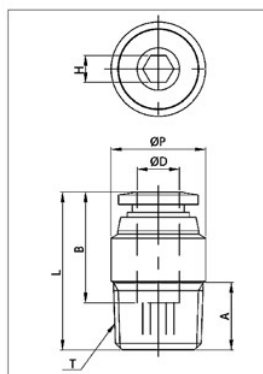
Model	Lager	ØD1	ØD2	ØP1	ØP2	L	E	J	ØC	B1	B2	M
PXG-6-4	✓	6	4	12.8	10.5	35.7	21.2	10.6	3.3	16.4	15.3	13.9
PXG-8-6	✓	8	6	14.6	12.8	39.9	25.6	12.7	3.3	18.3	16.4	15.5

Priključak ravni tip PC-R navoj



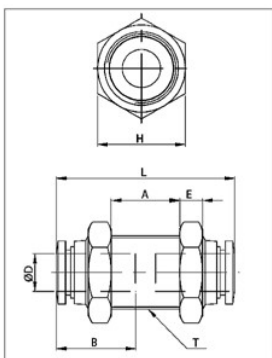
Model	Lager	ØD	ØP	T	L	A	B	H1(Hex)	H2(Hex)
PC-4-M5	✓	4	10.0	M5x0.8p	20.9	4.0	14.8	10	-
PC-4-M6		4	10.0	M6x1.0p	20.9	4.1	14.8	10	-
PC-4-R1/8		4	10.0	R 1/8	22.0	8.0	14.8	10	3
PC-4-R1/4		4	10.0	R 1/4	21.0	10.0	14.8	14	3
PC-4-R3/8		4	10.0	R 3/8	22.0	11.0	14.8	17	3
PC-6-M5	✓	6	12.0	M5x0.8p	23.1	4.0	16.4	12	-
PC-6-M6		6	12.0	M6x1.0p	23.0	4.1	16.4	12	-
PC-6-R1/8		6	12.0	R 1/8	23.4	8.0	16.4	12	4
PC-6-R1/4		6	12.0	R 1/4	21.9	10.0	16.4	14	5
PC-6-R3/8		6	12.0	R 3/8	22.9	11.0	16.4	17	5
PC-6-R1/2	✓	6	12.0	R 1/2	29.2	14.0	16.4	19	5
PC-8-R1/8		8	14.0	R 1/8	28.4	8.0	18.4	14	5
PC-8-R1/4		8	14.0	R 1/4	26.4	10.0	18.4	14	6
PC-8-R3/8		8	14.0	R 3/8	23.9	11.0	18.4	17	6
PC-8-R1/2		8	14.0	R 1/2	29.4	14.0	18.4	19	6
PC-10-R1/8		10	16.1	R 1/8	29.9	8.0	19.7	17	5
PC-10-R1/4		10	16.1	R 1/4	31.4	10.0	19.7	17	6
PC-10-R3/8		10	16.1	R 3/8	27.5	11.0	19.7	17	8
PC-10-R1/2		10	16.1	R 1/2	29.9	14.0	19.7	19	8
PC-12-R1/8	✓	12	19.0	R 1/8	33.2	8.0	21.9	19	5
PC-12-R1/4		12	19.0	R 1/4	33.7	10.0	21.9	19	6
PC-12-R3/8		12	19.0	R 3/8	30.7	11.0	21.9	19	8
PC-12-R1/2		12	19.0	R 1/2	30.2	14.0	21.9	19	8
PC-14-R3/8		14	21.8	R 3/8	36.6	11.0	23.8	22	10
PC-14-R1/2		14	21.8	R 1/2	34.0	14.0	23.8	22	10
PC-16-R3/8		16	24.0	R 3/8	37.5	11.0	24.0	24	10
PC-16-R1/2		16	24.0	R 1/2	40.5	14.0	24.0	24	10

Priključak ravni tip POC-R navoj



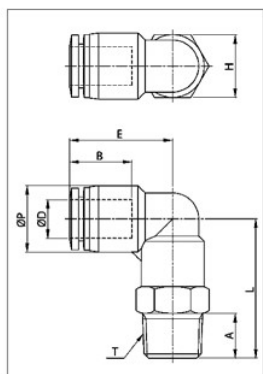
Model	Lager	ØD	ØP	T	L	A	B	H(Hex)
POC-4-M5	✓	4	10.0	M5x0.8p	20.9	4.0	14.8	2
POC-4-M6		4	10.0	M6x1.0p	21.3	4.6	14.8	3
POC-4-R1/8	✓	4	10.0	R 1/8	20.8	8.0	14.8	3
POC-4-R1/4		4	14.0	R 1/4	20.8	10.0	14.8	3
POC-4-R3/8		4	17.0	R 3/8	20.8	11.0	14.8	3
POC-6-M5	✓	6	12.0	M5x0.8p	23.1	4.0	16.4	2
POC-6-M6		6	12.0	M6x1.0p	23.5	4.6	16.4	3
POC-6-R1/8	✓	6	12.0	R 1/8	22.7	8.0	16.4	4
POC-6-R1/4	✓	6	14.0	R 1/4	23.4	10.0	16.4	4
POC-6-R3/8		6	17.0	R 3/8	23.4	11.0	16.4	4
POC-8-R1/8	✓	8	14.0	R 1/8	27.9	8.0	18.4	5
POC-8-R1/4	✓	8	14.0	R 1/4	25.9	10.0	18.4	6
POC-8-R3/8		8	17.0	R 3/8	25.9	11.0	18.4	6
POC-8-R1/2		8	21.0	R 1/2	27.3	14.0	18.4	6
POC-10-R1/8	✓	10	17.0	R 1/8	29.9	8.0	19.7	5
POC-10-R1/4	✓	10	17.0	R 1/4	27.8	10.0	19.7	6
POC-10-R3/8		10	17.0	R 3/8	27.8	11.0	19.7	8
POC-10-R1/2		10	21.0	R 1/2	27.8	14.0	19.7	8
POC-12-R1/8		12	19.0	R 1/8	32.2	8.0	21.9	5
POC-12-R1/4		12	19.0	R 1/4	33.8	10.0	21.9	6
POC-12-R3/8		12	19.0	R 3/8	31.7	11.0	21.9	8
POC-12-R1/2		12	21.0	R 1/2	30.2	14.0	21.9	8

Priključak pregradni tip PMM



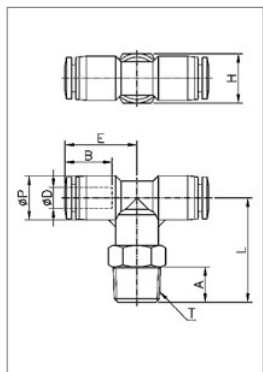
Model	Lager	ØD	T	L	E	A	B	H(Hex)
PMM-4	✓	4	M12x1.0p	35.5	4	15.5	14.8	14
PMM-6	✓	6	M14x1.0p	39.8	4	18.2	16.4	17
PMM-8	✓	8	M16x1.0p	42.2	5	18.3	18.4	19
PMM-10	✓	10	M20x1.0p	45.1	5	19.2	19.7	24
PMM-12	✓	12	M22x1.0p	50.2	5	24.1	21.9	26
PMM-16		16	M27x1.0p	53.1	6	22.8	24.0	32

Priključak ugaoni obrtni tip PL-R navoj



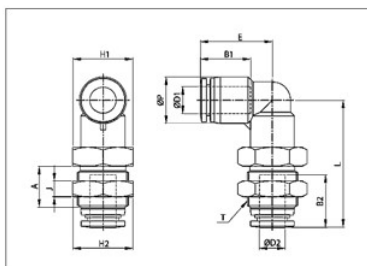
Model	Lager	ØD	ØP	T	L	E	A	B	H(Hex)
PL-4-M5	✓	4	10.5	M5x0.8p	20.5	18.5	4.0	14.8	10
PL-4-M6		4	10.5	M6x1.0p	20.6	18.5	4.1	14.8	10
PL-4-R1/8		4	10.5	R 1/8	24.5	18.5	8.0	14.8	10
PL-4-R1/4		4	10.5	R 1/4	26.5	18.5	10.0	14.8	14
PL-4-R3/8		4	10.5	R 3/8	27.5	18.5	11.0	14.8	17
PL-6-M5	✓	6	12.5	M5x0.8p	22.5	20.3	4.0	16.4	12
PL-6-M6		6	12.5	M6x1.0p	22.6	20.3	4.1	16.4	12
PL-6-R1/8	✓	6	12.5	R 1/8	26.5	20.3	8.0	16.4	12
PL-6-R1/4		6	12.5	R 1/4	29.5	20.3	10.0	16.4	14
PL-6-R3/8		6	12.5	R 3/8	30.5	20.3	11.0	16.4	17
PL-6-R1/2	✓	6	12.5	R 1/2	33.5	20.3	14.0	16.4	21
PL-8-R1/8	✓	8	14.8	R 1/8	28.0	22.9	8.0	18.3	14
PL-8-R1/4		8	14.8	R 1/4	31.0	22.9	10.0	18.3	14
PL-8-R3/8		8	14.8	R 3/8	32.0	22.9	11.0	18.3	17
PL-8-R1/2		8	14.8	R 1/2	35.0	22.9	14.0	18.3	21
PL-10-R1/8		10	17.5	R 1/8	28.5	24.6	8.0	20.2	17
PL-10-R1/4		10	17.5	R 1/4	31.5	24.6	10.0	20.2	17
PL-10-R3/8		10	17.5	R 3/8	32.5	24.6	11.0	20.2	17
PL-10-R1/2		10	17.5	R 1/2	35.5	24.6	14.0	20.2	21
PL-12-R1/8		12	20.5	R 1/8	32.4	28.7	8.0	22.9	19
PL-12-R1/4		12	20.5	R 1/4	34.4	28.7	10.0	22.9	19
PL-12-R3/8		12	20.5	R 3/8	35.4	28.7	11.0	22.9	19
PL-12-R1/2		12	20.5	R 1/2	38.4	28.7	14.0	22.9	21
PL-14-R3/8		14	23.0	R 3/8	38.0	31.4	11.0	23.7	22
PL-14-R1/2		14	23.0	R 1/2	41.0	31.4	12.0	23.7	22
PL-16-R3/8		16	25.5	R 3/8	42.8	32.8	11.0	24.1	24
PL-16-R1/2		16	25.5	R 1/2	45.8	32.8	14.0	24.1	24

Račva T tip PT-R navoj



Model	Lager	ØD	ØP	T	L	E	A	B	H(Hex)
PT-4-M5	✓	4	10.5	M5x0.8p	20.5	18.5	4.0	14.8	10
PT-4-M6		4	10.5	M6x1.0p	20.6	18.5	4.1	14.8	10
PT-4-1/8		4	10.5	R 1/8	24.5	18.5	8.0	14.8	10
PT-4-1/4		4	10.5	R 1/4	26.5	18.5	10.0	14.8	14
PT-4-3/8		4	10.5	R 3/8	27.5	18.5	11.0	14.8	17
PT-6-M5	✓	6	12.5	M5x0.8p	22.5	20.3	4.0	16.4	12
PT-6-M6		6	12.5	M6x1.0p	22.6	20.3	4.1	16.4	12
PT-6-1/8		6	12.5	R 1/8	26.5	20.3	8.0	16.4	12
PT-6-1/4		6	12.5	R 1/4	29.5	20.3	10.0	16.4	14
PT-6-3/8		6	12.5	R 3/8	30.5	20.3	11.0	16.4	17
PT-6-1/2		6	12.5	R 1/2	33.5	20.3	14.0	16.4	21
PT-8-1/8		8	15.0	R 1/8	28.0	22.6	8.0	18.3	14
PT-8-1/4		8	15.0	R 1/4	31.0	22.6	10.0	18.3	14
PT-8-3/8		8	15.0	R 3/8	32.0	22.6	11.0	18.3	17
PT-8-1/2		8	15.0	R 1/2	35.0	22.6	14.0	18.3	21
PT-10-1/8		10	17.5	R 1/8	28.5	25.2	8.0	20.2	17
PT-10-1/4		10	17.5	R 1/4	31.5	25.2	10.0	20.2	17
PT-10-3/8		10	17.5	R 3/8	32.5	25.2	11.0	20.2	17
PT-10-1/2		10	17.5	R 1/2	35.5	25.5	14.0	20.2	21
PT-12-1/8		12	20.5	R 1/8	32.4	28.7	8.0	22.9	19
PT-12-1/4		12	20.5	R 1/4	34.4	28.7	10.0	22.9	19
PT-12-3/8		12	20.5	R 3/8	35.4	28.7	11.0	22.9	19
PT-12-1/2		12	20.5	R 1/2	38.4	28.7	14.0	22.9	21
PT-16-3/8		16	25.5	R 3/8	42.8	32.8	11.0	24.1	24
PT-16-1/2		16	25.5	R 1/2	45.8	32.8	14.0	24.1	24

Priključak pregradni ugaoni tip PLM



Model	Lager	ØD1	ØD2	ØP	T	L	E	A	B1	B2	J	H1(Hex)	H2(Hex)
PLM-4		4	4	10.5	M12x1.0p	32.5	18.5	10.5	14.8	14.8	4.0	14	14
PLM-6	✓	6	6	12.5	M14x1.0p	38.2	20.3	12.5	16.4	16.4	4.0	17	17
PLM-8	✓	8	8	14.8	M16x1.0p	40.4	22.9	13.0	18.3	18.4	5.0	19	19
PLM-10	✓	10	10	17.5	M20x1.0p	41.9	24.6	13.5	20.2	19.7	5.0	24	24
PLM-12		12	12	20.5	M22x1.0p	48.1	28.7	16.5	22.9	21.9	5.0	26	26