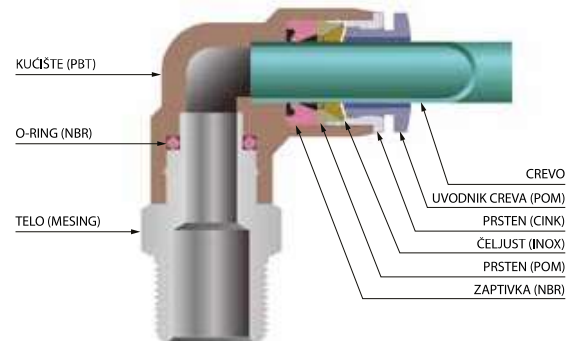


## Priključci za vazduh

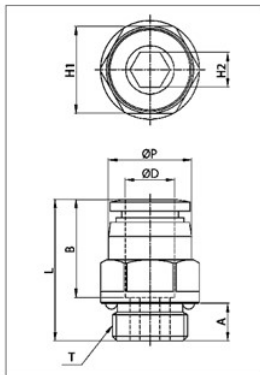
- Izrađeni od visoko kvalitetnih materijala, jednostavni za upotrebu
- Jednostavno spajanje
- Jednostavno rastavljanje
- Visoka sigurnost spoja
- Omogućuju maksimalnu fleksibilnost u izvođenju svih pneumatskih instalacija u industriji
- Pogodni za upotrebu kod različitih tipova pneumatskih creva

### Tehničke karakteristike

- Radni medijum: Vazduh (ne upotrebljavati za druge gasove ili tečnosti)
- Radni pritisak: 0 do 10 bar
- Vakuum max: -0,99 bar
- Radna temperatura: 0 °C do +60 °C

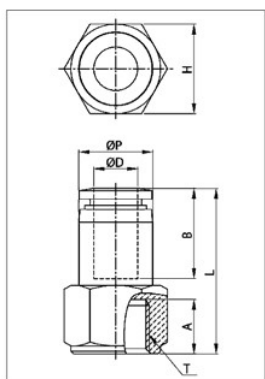


## Priključak ravni tip PC-G navoj



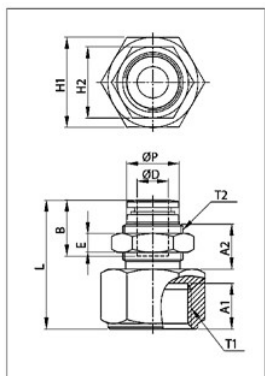
| Model      | Lager | ØD | ØP   | T     | L    | A   | B    | H1(Hex) | H2(Hex) |
|------------|-------|----|------|-------|------|-----|------|---------|---------|
| PC-4-G1/8  | ✓     | 4  | 10.3 | G 1/8 | 20.0 | 5.0 | 14.8 | 13      | 3       |
| PC-4-G1/4  | ✓     | 4  | 10.3 | G 1/4 | 21.5 | 6.5 | 14.8 | 15      | 3       |
| PC-4-G3/8  | ✓     | 4  | 10.3 | G 3/8 | 21.5 | 6.5 | 14.8 | 17      | 3       |
| PC-6-G1/8  | ✓     | 6  | 12.3 | G 1/8 | 21.2 | 5.0 | 16.4 | 13      | 4       |
| PC-6-G1/4  | ✓     | 6  | 12.3 | G 1/4 | 23.2 | 6.5 | 16.4 | 15      | 5       |
| PC-6-G3/8  | ✓     | 6  | 12.3 | G 3/8 | 22.2 | 6.5 | 16.4 | 17      | 5       |
| PC-8-G1/8  | ✓     | 8  | 14.3 | G 1/8 | 26.9 | 5.0 | 18.4 | 15      | 5       |
| PC-8-G1/4  | ✓     | 8  | 14.3 | G 1/4 | 24.4 | 6.5 | 18.4 | 15      | 6       |
| PC-8-G3/8  | ✓     | 8  | 14.3 | G 3/8 | 23.4 | 6.5 | 18.4 | 17      | 6       |
| PC-8-G1/2  | ✓     | 8  | 14.3 | G 1/2 | 23.9 | 8.0 | 18.4 | 21      | 6       |
| PC-10-G1/8 | ✓     | 10 | 16.5 | G 1/8 | 28.9 | 5.0 | 19.7 | 17      | 5       |
| PC-10-G1/4 | ✓     | 10 | 16.5 | G 1/4 | 28.9 | 6.5 | 19.7 | 17      | 6       |
| PC-10-G3/8 | ✓     | 10 | 16.5 | G 3/8 | 25.4 | 6.5 | 19.7 | 17      | 8       |
| PC-10-G1/2 | ✓     | 10 | 16.5 | G 1/2 | 25.9 | 8.0 | 19.7 | 21      | 8       |
| PC-12-G1/4 | ✓     | 12 | 19.0 | G 1/4 | 31.7 | 6.5 | 21.9 | 19      | 6       |
| PC-12-G3/8 | ✓     | 12 | 19.0 | G 3/8 | 27.2 | 6.5 | 21.9 | 19      | 8       |
| PC-12-G1/2 | ✓     | 12 | 19.0 | G 1/2 | 28.2 | 8.0 | 21.9 | 21      | 8       |
| PC-14-G3/8 | ✓     | 14 | 21.8 | G 3/8 | 33.5 | 6.5 | 23.8 | 22      | 10      |
| PC-14-G1/2 | ✓     | 14 | 21.8 | G 1/2 | 32.8 | 8.0 | 23.8 | 24      | 10      |
| PC-16-G3/8 | ✓     | 16 | 24.0 | G 3/8 | 36.5 | 8.0 | 24.0 | 24      | 10      |
| PC-16-G1/2 | ✓     | 16 | 24.0 | G 1/2 | 36.5 | 9.0 | 24.0 | 24      | 10      |

## Priključak ravni tip PCF-G navoj



| Model       | Lager | ØD | ØP   | T     | L    | A    | B    | H(Hex) |
|-------------|-------|----|------|-------|------|------|------|--------|
| PCF-4-G1/8  | ✓     | 4  | 10.0 | G 1/8 | 27.1 | 9.0  | 9.0  | 14     |
| PCF-4-G1/4  | ✓     | 4  | 10.0 | G 1/4 | 29.1 | 11.0 | 11.0 | 17     |
| PCF-4-G3/8  |       | 4  | 10.0 | G 3/8 | 30.1 | 12.0 | 12.0 | 22     |
| PCF-6-G1/8  | ✓     | 6  | 12.0 | G 1/8 | 28.2 | 10.0 | 10.0 | 14     |
| PCF-6-G1/4  | ✓     | 6  | 12.0 | G 1/4 | 30.2 | 11.0 | 11.0 | 17     |
| PCF-6-G3/8  | ✓     | 6  | 12.0 | G 3/8 | 31.2 | 12.0 | 12.0 | 22     |
| PCF-8-G1/8  | ✓     | 8  | 14.0 | G 1/8 | 29.4 | 10.0 | 10.0 | 14     |
| PCF-8-G1/4  | ✓     | 8  | 14.0 | G 1/4 | 31.4 | 11.0 | 11.0 | 17     |
| PCF-8-G3/8  | ✓     | 8  | 14.0 | G 3/8 | 32.4 | 12.0 | 12.0 | 22     |
| PCF-8-G1/2  |       | 8  | 14.0 | G 1/2 | 34.4 | 14.0 | 14.0 | 24     |
| PCF-10-G1/8 |       | 10 | 16.4 | G 1/8 | 32.6 | 10.0 | 10.0 | 17     |
| PCF-10-G1/4 | ✓     | 10 | 16.4 | G 1/4 | 32.6 | 11.0 | 11.0 | 17     |
| PCF-10-G3/8 |       | 10 | 16.4 | G 3/8 | 33.6 | 12.0 | 12.0 | 22     |
| PCF-10-G1/2 |       | 10 | 16.4 | G 1/2 | 35.6 | 14.0 | 14.0 | 24     |
| PCF-12-G1/4 |       | 12 | 19.0 | G 1/4 | 37.1 | 11.0 | 11.0 | 22     |
| PCF-12-G3/8 |       | 12 | 19.0 | G 3/8 | 37.1 | 12.0 | 12.0 | 22     |
| PCF-12-G1/2 |       | 12 | 19.0 | G 1/2 | 39.1 | 14.0 | 14.0 | 24     |

## Priključak pregradni tip PMF-G navoj



| Model       | Lager | ØD | ØP   | T1    | T2       | L    | E | A1   | A2   | B    | H1(Hex) | H2(Hex) |
|-------------|-------|----|------|-------|----------|------|---|------|------|------|---------|---------|
| PMF-4-G1/8  |       | 4  | 10.0 | G 1/8 | M12x1.0p | 27.1 | 4 | 9.0  | 10.6 | 14.8 | 14      | 14      |
| PMF-4-G1/4  |       | 4  | 10.0 | G 1/4 | M12x1.0p | 29.1 | 4 | 11.0 | 10.6 | 14.8 | 17      | 14      |
| PMF-4-G3/8  |       | 4  | 10.0 | G 3/8 | M12x1.0p | 30.1 | 4 | 12.0 | 10.6 | 14.8 | 22      | 14      |
| PMF-6-G1/8  | ✓     | 6  | 12.0 | G 1/8 | M14x1.0p | 30.2 | 4 | 9.0  | 11.0 | 16.4 | 17      | 17      |
| PMF-6-G1/4  | ✓     | 6  | 12.0 | G 1/4 | M14x1.0p | 30.2 | 4 | 11.0 | 11.0 | 16.4 | 17      | 17      |
| PMF-6-G3/8  |       | 6  | 12.0 | G 3/8 | M14x1.0p | 31.2 | 4 | 12.0 | 11.0 | 16.4 | 22      | 17      |
| PMF-8-G1/8  | ✓     | 8  | 14.0 | G 1/8 | M16x1.0p | 31.4 | 5 | 9.0  | 12.0 | 18.4 | 19      | 19      |
| PMF-8-G1/4  |       | 8  | 14.0 | G 1/4 | M16x1.0p | 31.4 | 5 | 11.0 | 12.0 | 18.4 | 19      | 19      |
| PMF-8-G3/8  |       | 8  | 14.0 | G 3/8 | M16x1.0p | 32.4 | 5 | 12.0 | 12.0 | 18.4 | 22      | 19      |
| PMF-10-G1/4 | ✓     | 10 | 16.1 | G 1/4 | M20x1.0p | 33.6 | 5 | 11.0 | 12.7 | 19.7 | 24      | 24      |
| PMF-10-G3/8 |       | 10 | 16.1 | G 3/8 | M20x1.0p | 33.6 | 5 | 12.0 | 12.7 | 19.7 | 24      | 24      |
| PMF-10-G1/2 |       | 10 | 16.1 | G 1/2 | M20x1.0p | 35.6 | 5 | 14.0 | 12.7 | 19.7 | 24      | 24      |
| PMF-12-G1/4 |       | 12 | 19.0 | G 1/4 | M22x1.0p | 38.3 | 5 | 11.0 | 17.1 | 21.9 | 24      | 26      |
| PMF-12-G3/8 | ✓     | 12 | 19.0 | G 3/8 | M22x1.0p | 38.3 | 5 | 12.0 | 17.1 | 21.9 | 24      | 26      |
| PMF-12-G1/2 | ✓     | 12 | 19.0 | G 1/2 | M22x1.0p | 40.3 | 5 | 14.0 | 17.1 | 21.9 | 24      | 26      |